



COMMON FISH HEALTH ISSUES

- Katharine “Ono” Onofryton, DVM
- Wisconsin Aquaculture Feb 2025





FISH HEALTH ISSUES

Non-infectious

- Nutrition
- Water Quality
- Congenital
- Trauma

Infectious

- Viruses
 - Bacteria
 - Parasites
 - “Fungi” / Molds
-

FAIRLY COMMON BACTERIAL DISEASES

Aeromonas salmonicida (Furunculosis)

Aeromonas hydrophila (Motile Aeromonad
Septicemia, Red Sore Disease)

Columnaris Causing Bacteria (Columnaris)

Flavobacterium psychrophilum (Bacterial
Coldwater Disease)

Streptococcus iniae (Strep)

Just to name a few

PARASITIC & “FUNGAL” DISEASES

Ichthyophthirius multifiliis
 (“Ich”, White Spot Disease)

Myxobolus cerebralis
 (Whirling Disease)

Monogeneans – *Dactylogyrus*
& *Gyrodactylus*

Saprolegnia – not a true
fungus

VIRUSES

Lot of regulatory testing

Outbreaks are less common

Biosecurity is key

No treatments

Host and temperature specific most of the time

AEROMONAS SALMONICIDA

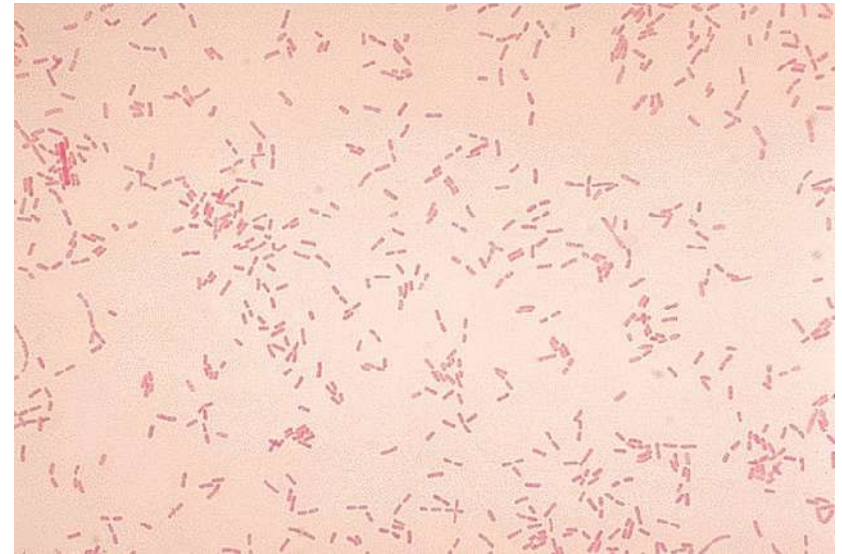
- Presentation
 - Serious mortality
 - Salmonids, carp
- Clinical Signs
 - Furuncles, hemorrhage, enlarged kidneys
- Diagnosis
 - Bacterial culture
- Treatment
 - Antibiotic medicated feed





AEROMONAS HYDROPHILA

- Presentation
 - Fresh and brackish water
 - Acute to chronic morbidity and mortality
 - All freshwater species, mainly warmer water
- Clinical signs
 - Redness, ulcers, popeye, inflammation of the coelom
- Diagnosis
 - Bacterial culture
- Treatment
 - Antibiotic medicated feed





COLUMNARIS CAUSING BACTERIA

- Presentation
 - Freshwater at high temperatures
- Clinical Signs
 - Ulcers, fin erosion, gill necrosis, high mortality, yellow pigmented lesions
- Diagnosis
 - Bacterial culture
- Treatment
 - Dual internal and external
 - Antibiotic medicated feed
 - Bath treatment: hydrogen peroxide, chloramine T





FLAVOBACTERIUM PSYCHROPHILUM

- Presentation
 - Freshwater at low temperatures
- Clinical Signs
 - Ulcers, fin & tail erosion, high mortality, yellow pigmented lesions, darkened tails
- Diagnosis
 - Bacterial culture
- Treatment
 - Antibiotic medicated feed



- Oregon State University
-



STREPTOCOCCUS INIAE

- Presentation
 - Typically mortality in tilapia, barramundi
- Clinical Signs
 - Abnormal swimming, loss of buoyancy control, popeye
- Diagnosis
 - Bacterial culture
- Treatment
 - Antibiotic medicated feed





QUICK NOTE ON HUSBANDRY

Feeding strategy

Mort picking

Water quality

Reducing stress

Train staff



OVERALL PLAN

Genetics

Risk Factors

Pathogen Load

Biosecurity

Early Detection

Treatments

KEY TAKEAWAYS



Monitoring, record keeping



Good relationship with a fish health professional



Early diagnosis

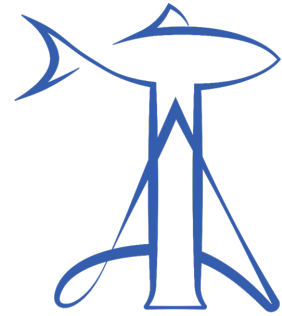


Early, effective treatment



Keep an eye on things!

THANK YOU!
ANY QUESTIONS?



AQUATACTICS
Bimeda®