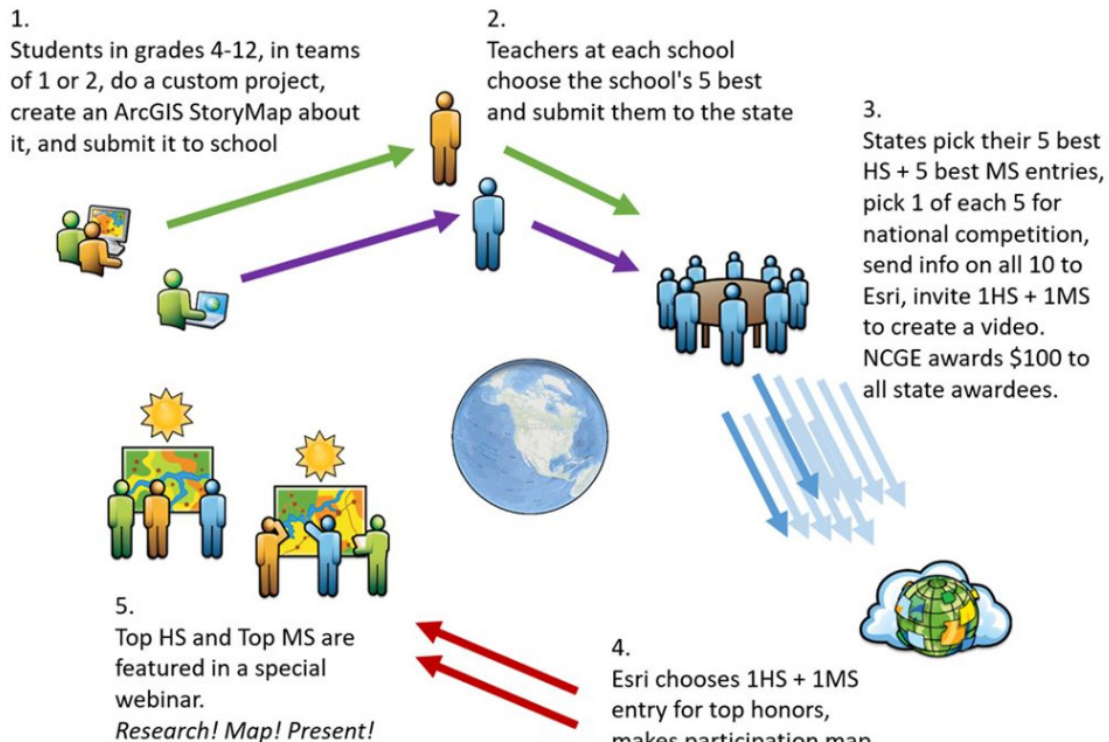


# ArcGIS Online Competition for U.S. High School and Middle School Students - 2024

Esri and the National Council for Geographic Education (NCGE) challenge US students to conduct and share a research project about something in their home state. The ArcGIS Online Competition is open to high school ("HS," gr.9-12) and middle school ("MS," gr.4-8) students in participating states in the US who can gather, create, analyze, interpret, and present data via an ArcGIS StoryMap.



<http://esriurl.com/agoschoolcomp>



## Free ArcGIS software for schools and clubs

Esri offers to all K12 schools (public, nonpublic, and homeschools), districts, and formal youth-serving clubs the ArcGIS School Bundle for free for instructional use. The bundle is anchored by an ArcGIS Online Organization, and includes a fleet of supporting tools. Schools in US should see [esri.com/schools](http://esri.com/schools) for more info.

Esri, TomTom, Garmin, SafeGraph, GeoTechnologies, Inc, METI/NASA, USGS, EPA, NPS, US Census Bureau, USDA, USFWS

# Register for the Wisconsin ArcGIS Online Student Map Competition

<https://wi-arcgis-online-student-map-competition-wlia.hub.arcgis.com/>

Acquire an ArcGIS Online license: The school district, individual school, or club applies for and sets up an Esri ArcGIS Online School Bundle license. Students are provided logins to the account.

Register for the competition: One teacher or administrator from the school or club registers for the Wisconsin competition.

Students select Wisconsin topics to research: Participating students, working individually or in pairs, select a Wisconsin topic to research. It should be a topic students are personally interested in researching.

Students create competition ArcGIS StoryMaps entries: Following competition guidelines and requirements, students complete their research and create an ArcGIS StoryMap detailing research findings and results. See Requirements tab for details.

School entries judged: All school or club entries are judged, and up to five are submitted to the Wisconsin state competition.

State judges all Wisconsin entries: A combination of GIS professionals and educators judge all entries submitted to the state competition. The top five in each division are selected based on judging results.

Competition awards: The top five winners in each division are awarded a \$100 prize (if submitted by a team of two students, the team receives a \$100 prize).

Wisconsin's entries submitted to Esri national competition: The top five entries in each division are submitted to Esri's national competition. The first place winners in each division compete for the national title.



## Does your school need a GeoMentor to help get you started?

Contact Douglas Miskowiak  
Chair of Geography and Geology  
email: [dmiskowi@uwsp.edu](mailto:dmiskowi@uwsp.edu)

## Timeline for 2024 Competition

Mon May 13, 2024: Deadline for states to submit entries to Esri

Tue May 28, 2024: Esri announces 2024 results

Thu June 20, 2024: Competition Results Webinar



GIS Center  
College of Letters and Science  
**University of Wisconsin - Stevens Point**