



MAY ROACH HALL

ABOUT MAY ROACH HALL

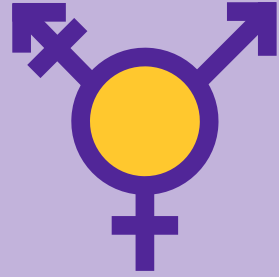
May Roach Hall is a traditional-style residence hall that is located near the **Allen Fitness Center** as well as the **Marshfield Clinic Health System Champions Hall**. May Roach Hall is within walking distance of **Schmeeckle Reserve** and student parking lot Q. Students are housed in a "scattered" room configuration; with restroom facilities available on each floor (restrooms are single-sexed, with a gender-inclusive bathroom on the second floor).

Call May Roach Hall

Phone: 715-346-3736

Send Mail to May Roach

Student's name
Rm# May Roach Hall
301 Reserve Street
Stevens Point, WI 54481



Gender-Inclusive Bathroom



Near Allen Fitness Center

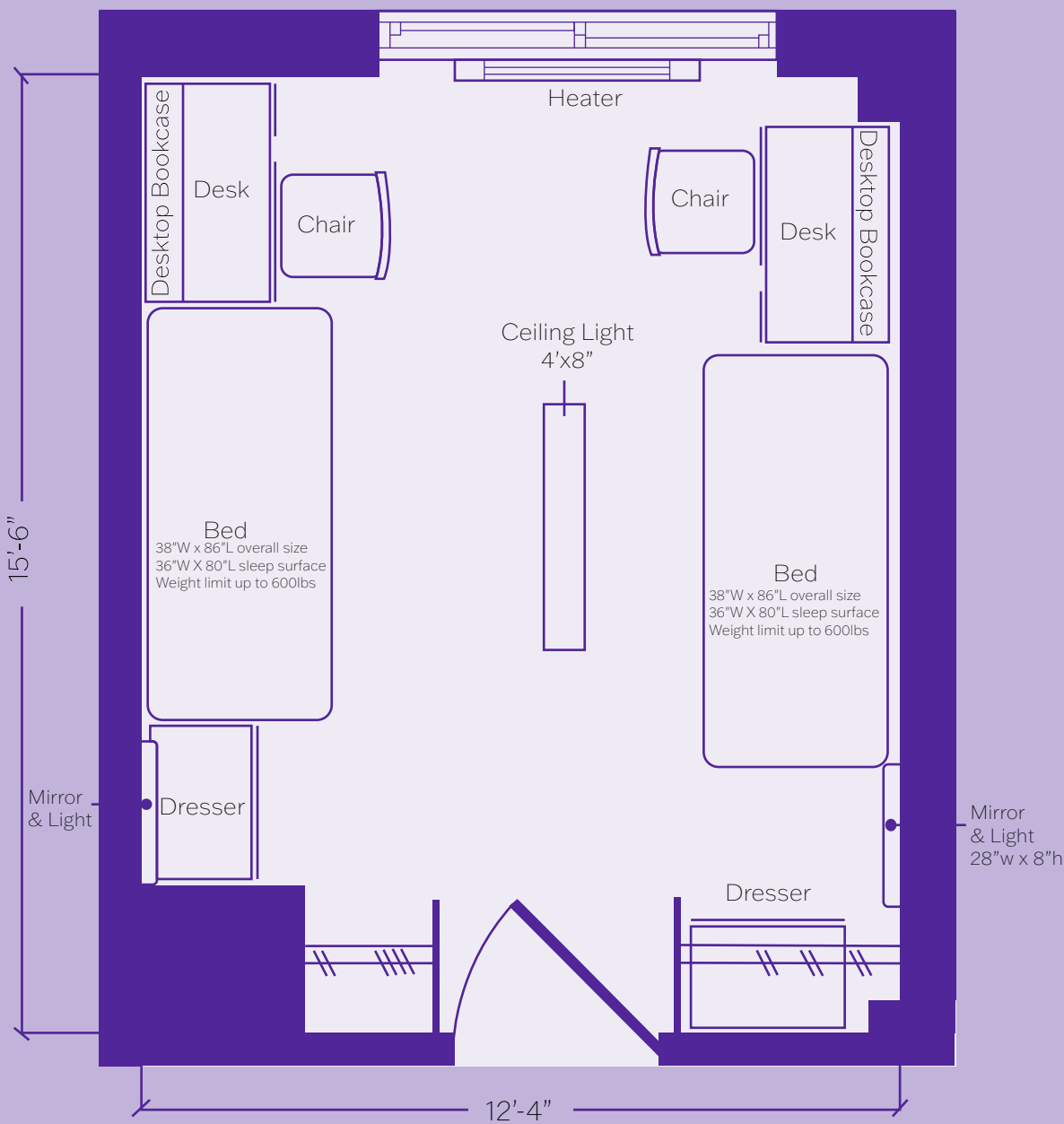
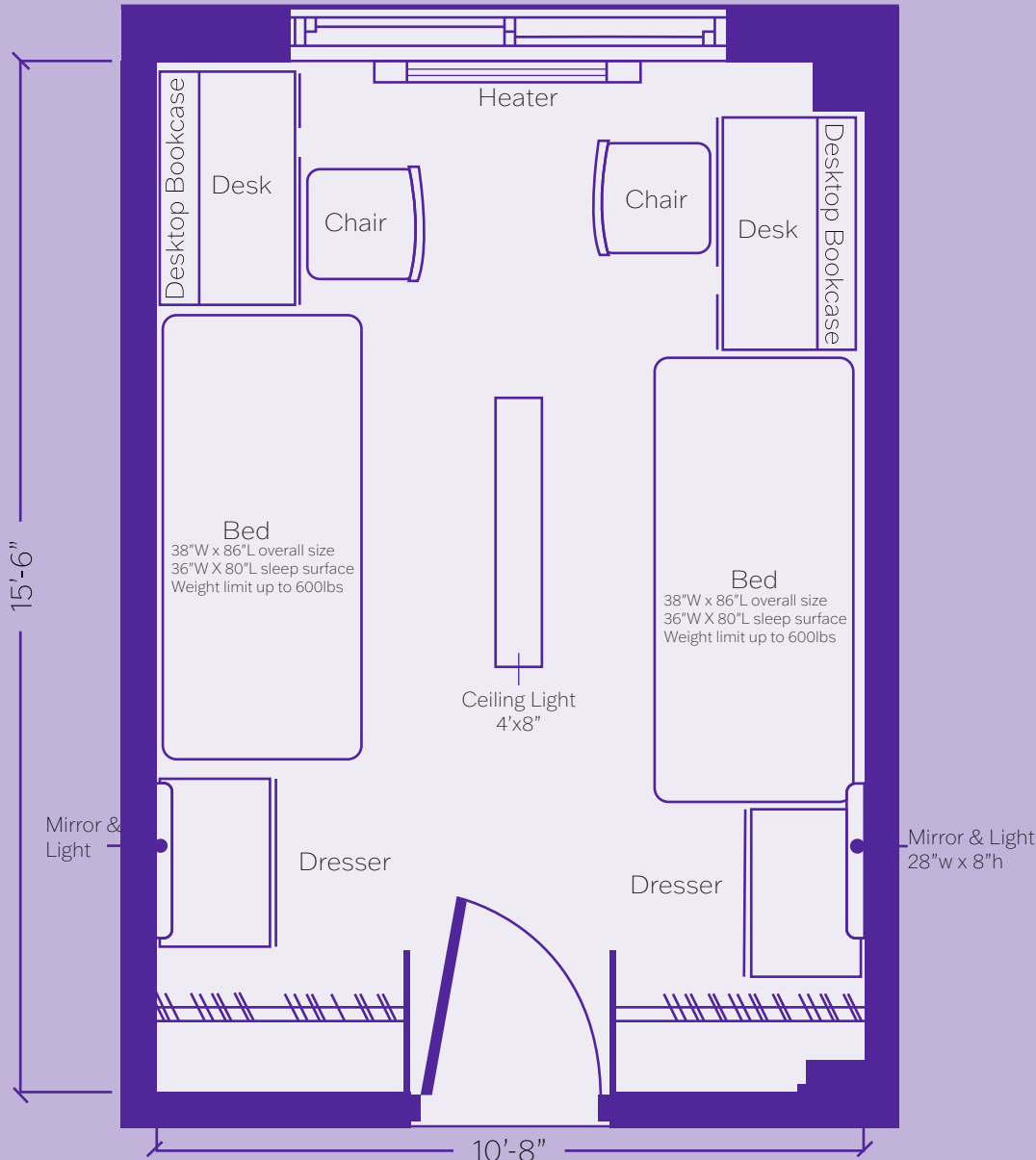


Alcohol-Free Community

ROOM DIMENSIONS AND FURNISHINGS

Double room occupancy with the provided furnishings:

- 2 beds (**frame** with a twin extra-long mattress)
- 2 **desks** with attached bookcase/hutch (desk lamp included)
- 2 desk chairs
- 2 **dressers**
- 2 closets
- 2 wastebaskets
- 2 mirrors



RESIDENCE HALL FEATURES

Basement features:

- Full laundry (free!)
- Study Lounge
- Computer lab
- Recreation/lounge area
- Full kitchen
- Gender inclusive bathroom

Additional Features:

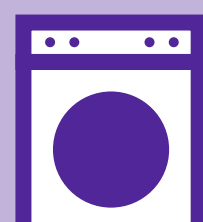
- Full kitchen on each floor
- Alcohol-free community
- Gender-inclusive bathroom on 2nd floor

Room features:

- WiFi connection
- Cable TV hookups
- SpectrumU Streaming



Computer Lab and Study Lounge



Full Laundry (Free to use!)

MAY M. ROACH

- May Roach served the university for more than 40 years.
- She attended Stevens Point Normal School in 1905 and 1906 and joined the faculty in 1914.
- Together with President William Hansen and Fred Schmeeckle, she played a role in the development of the conservation program for which she later received recognition in 1972.
- After her retirement in 1956, she helped with university fund-raising and actively participated in numerous campus events.
- She was active in numerous civic groups and was a director of Wisconsin Headwaters Inc., a non-profit group devoted to the development of north-central Wisconsin.
- Professor Roach devoted much of her life to her school, church, and community and continues to be remembered as one of the most colorful and beloved personalities in the institution's history.



HOUSING AND RESIDENCE LIFE



University of Wisconsin
Stevens Point

1108 Fremont St., Stevens Point, WI 54481
housing@uwsp.edu | 715-346-3511

