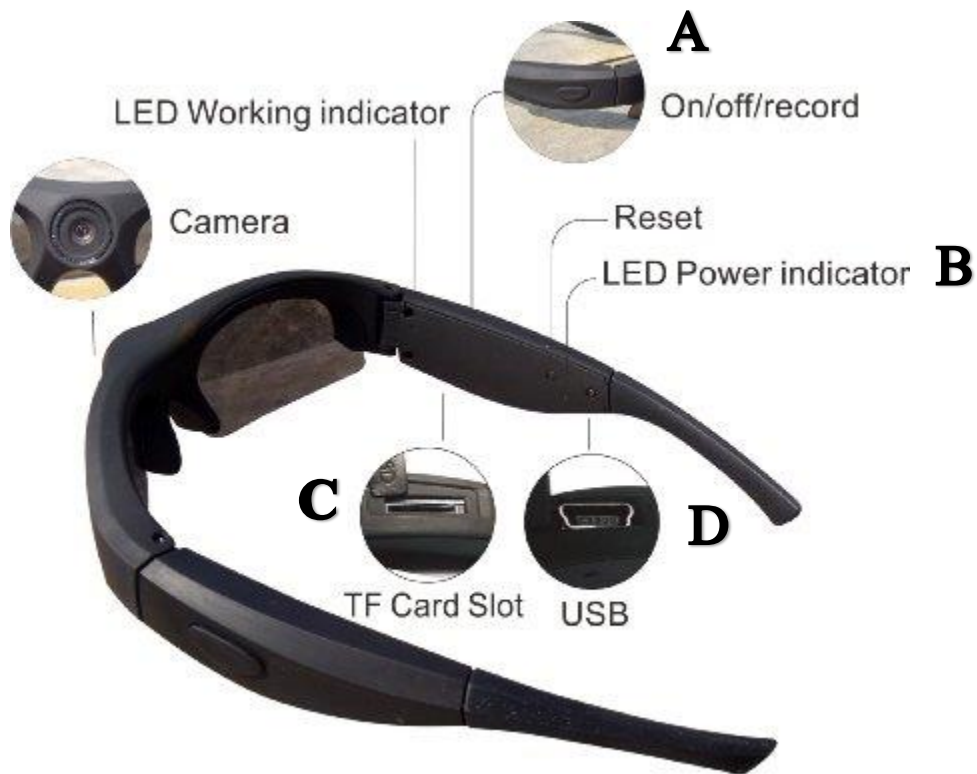


iVue Eyewear Quick Start Guide



The Basics

Step 1: Turn on your iVue

- Locate the power button (A) which is located on the right temple's outside edge
- Press the power button until you hear 4 beeps
- You should now see a blinking blue light on the LED status indicator (B).
- If the blue light is not on - try plugging your iVue in - they probably need to be charged.
- To turn off your iVue, just push and hold the same button until you hear a single long beep.

Step 2: Record a Video.

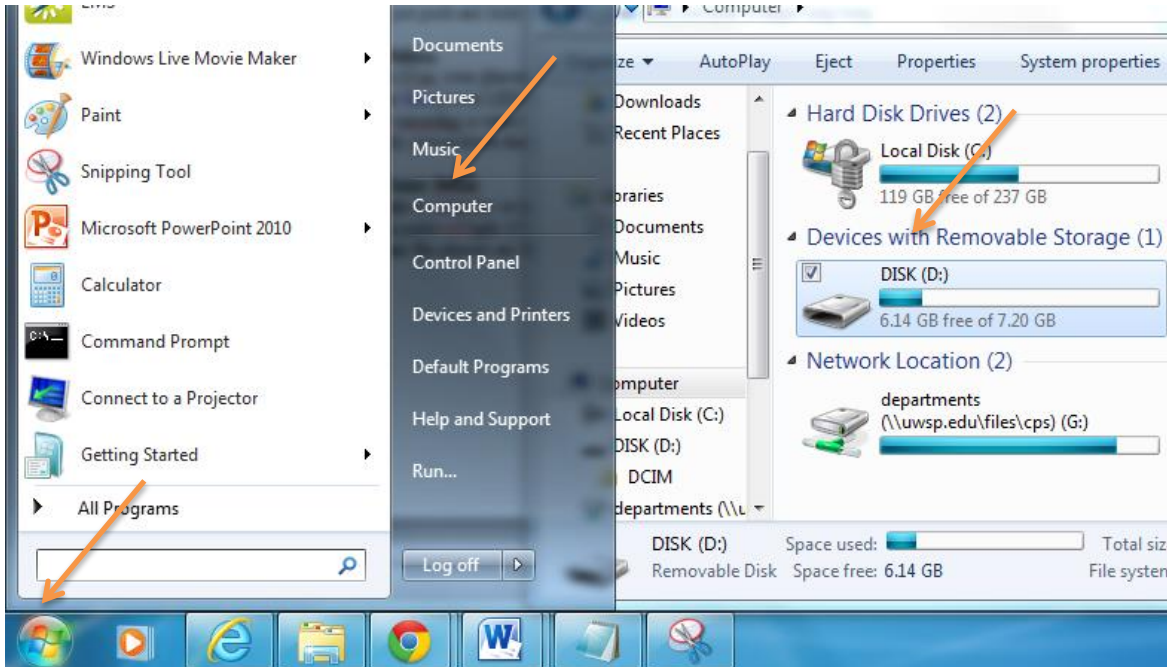
- After powering on your iVue, your glasses are now recording
- You should now see the blue power LED blinking(B)
- Congrats - you are now recording a video!
- To stop recording simply power down the glasses.

Step 3: Charging Your iVue

- Plug the iVue glasses into a computer or a wall charger using the USB cable found in the case (C)
- Four beeps along with a solid red light (C) indicates the glasses are charging
- A solid green light means the glasses are finished charging.

Step 5: Retrieving your Videos and Pictures

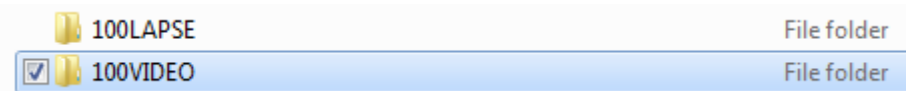
- Plug the iVue glasses into a computer using the USB cable (D)
- A solid orange light will show that the iVue is connected
- Now go to start, Computer, and select the iVue glasses.



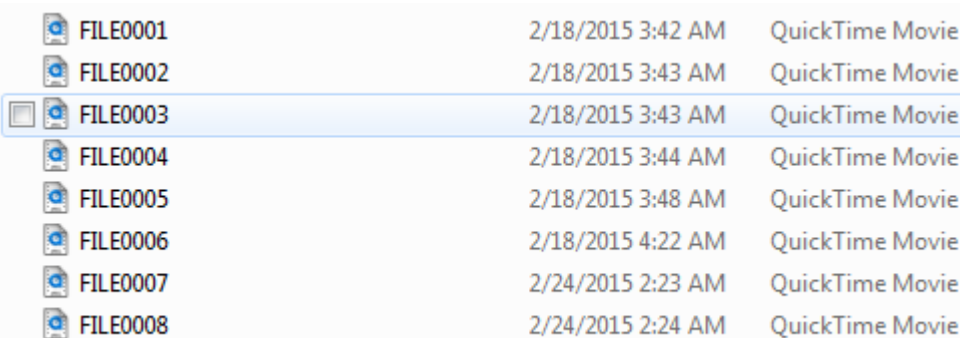
- Double click on DCIM folder



- Double Click on 100Video Folder



- Drag a drop desired videos into preferred storage location



- As an alternative, you can plug the Micro SD card into the adapter then plug directly into your computer. Follow the same steps to get to obtain your videos.

