


Upper Midwest Association for Campus Sustainability
 Healthy Planet, Healthy People: Advancing Justice in Challenging Times
 Action on the Climate Crisis for Health, Equity, & Hope



Renee N. Salas, MD, MPH, MS
 Assistant Professor of Emergency Medicine, Harvard Medical School
 Department of Emergency Medicine, Massachusetts General Hospital
 Affiliated Faculty & Former Burke Fellow, Harvard Global Health Institute
 Yerby Fellow, Center for Climate, Health, and the Global Environment at Harvard T.H. Chan School of Public Health

1

Question 1

Have you heard a lecture on climate change and health prior to today?

Join at

slido.com


#32583



2

Outline

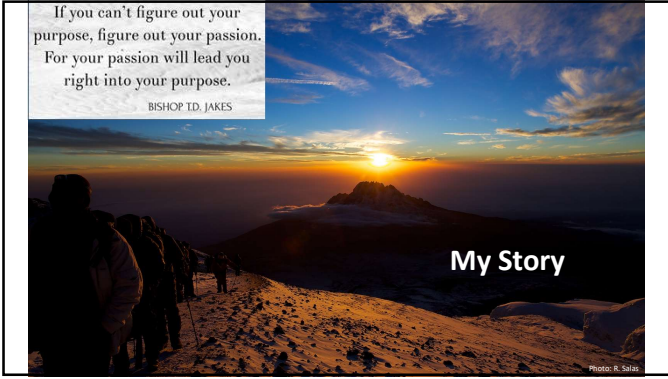
#1: The Climate Crisis, Health, & Equity



#2: The Health & Equity Benefits of Climate Action

#3: What Can You Do?

3



4



5

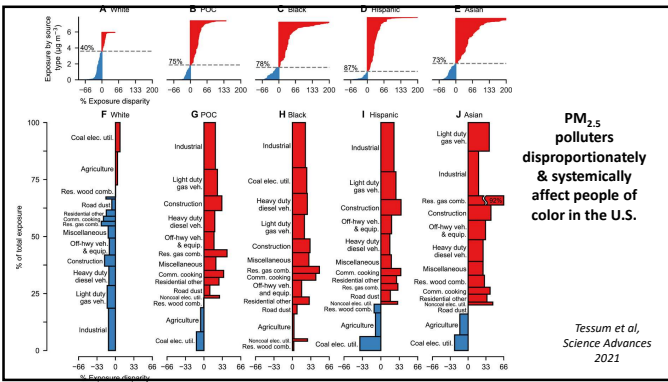


6



Air pollution & the climate crisis have same root cause - the burning of fossil fuels

7



8

Environmental racism

Environmental racism is racial discrimination in environmental policymaking and the enforcement of regulations and laws that deliberately target communities of color for toxic waste disposal and polluting industries, sanction the life-threatening presence of poisons and pollutants in communities of color, and exclude people of color from mainstream environmental groups, decision-making boards, commissions, and regulatory bodies.

Adapted from Benjamin F. Chavis in the Foreword to "Confronting Environmental Racism, Voices from the Grassroots."

Solas RN et al, 2020
Lancet Countdown
U.S. Brief

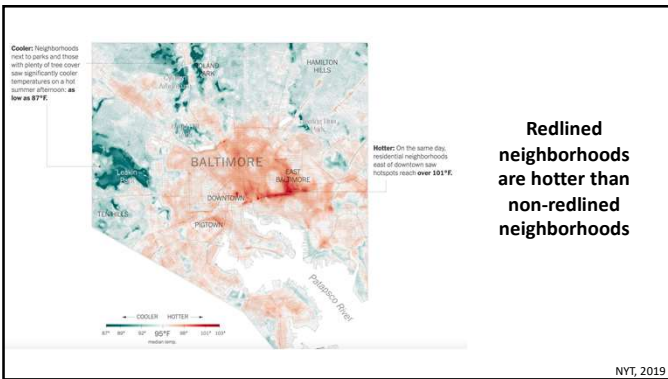
9



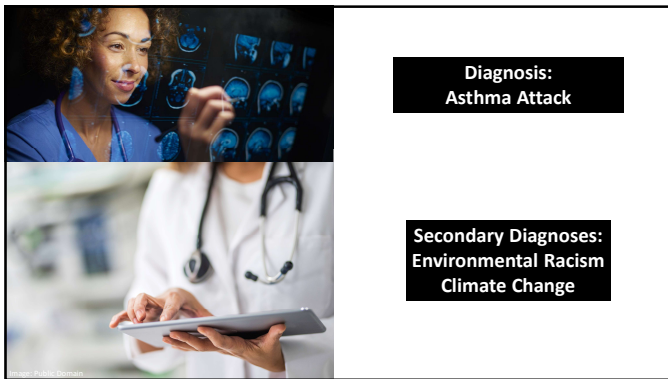
10



11



12



13



14



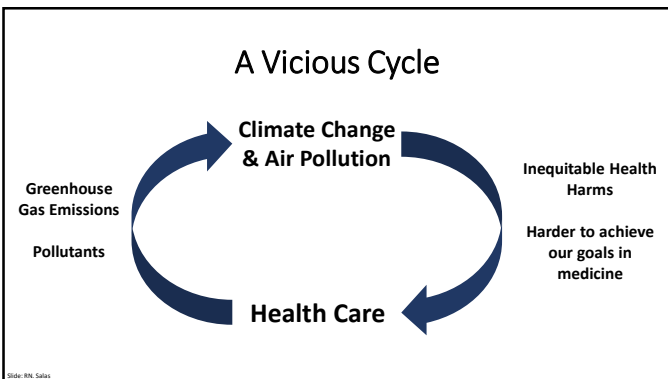
15



19



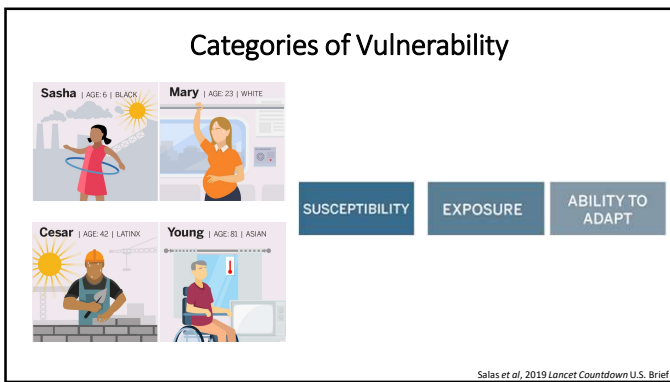
20



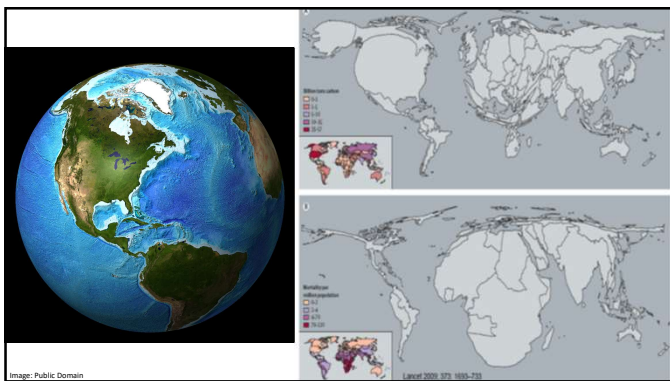
21



22



23



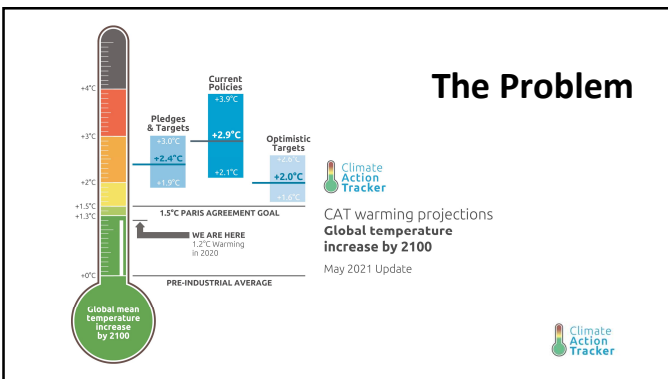
24



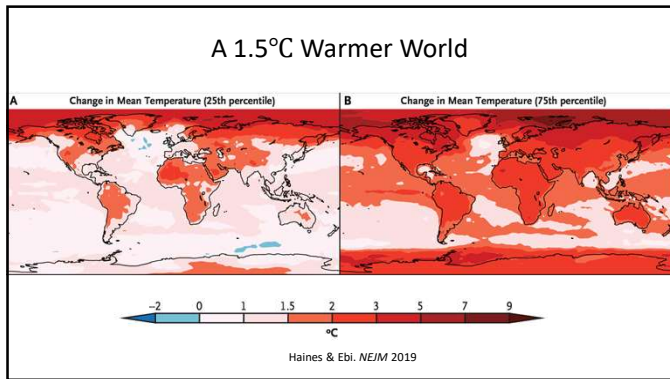
25



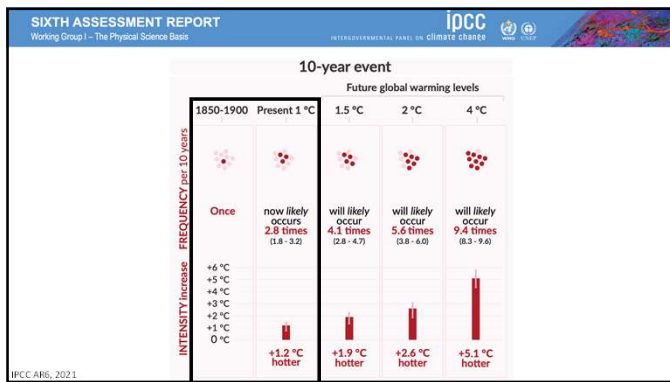
26



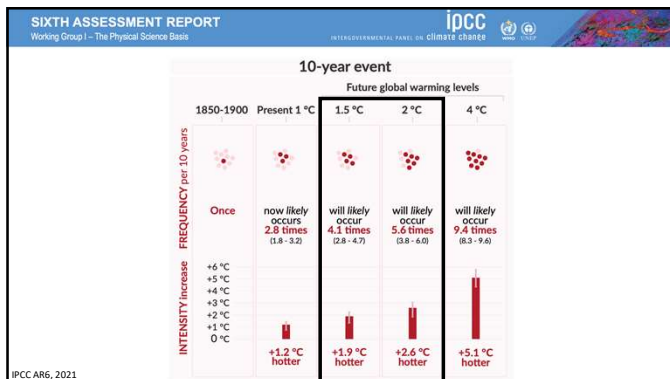
27



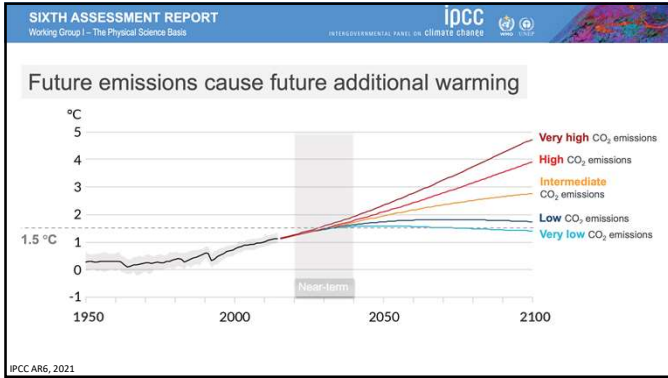
28



29



30



31



32

EDITORIAL

Call for Emergency Action to Limit Global Temperature Increases, Restore Biodiversity, and Protect Health

Lukeye Atwoli, Abdullah H. Baqui, Thomas Benfield, Raffaella Bosurgi, Fiona Godlee, Stephen Hancock, Richard Horton, Laurie Laybourne-Langton, Carlos Augusto Monteiro, Ian Norman, Kirsten Patrick, Nigel Praibies, et al.

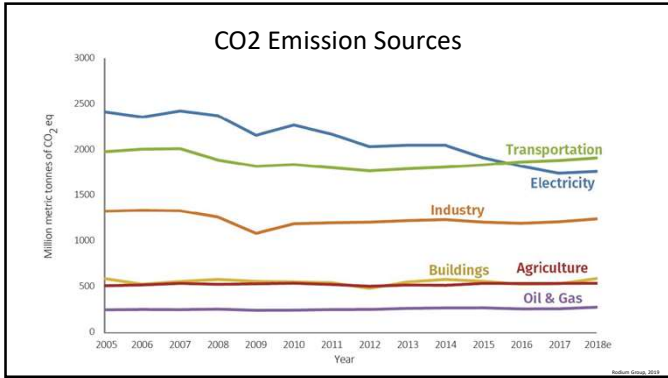
THE NEW ENGLAND JOURNAL of MEDICINE

THE LANCET

thebmj

Over 200 Health Journals Worldwide

33



34



35



36



37



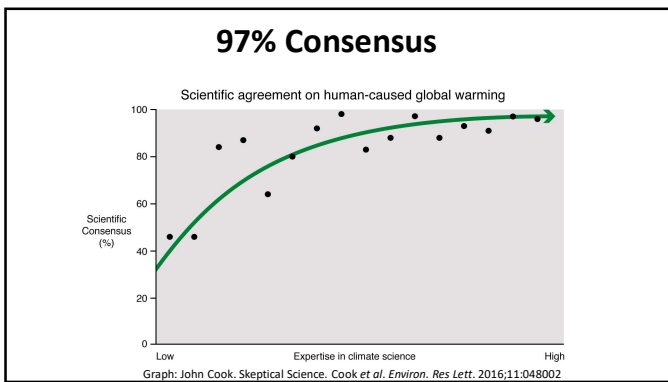
38



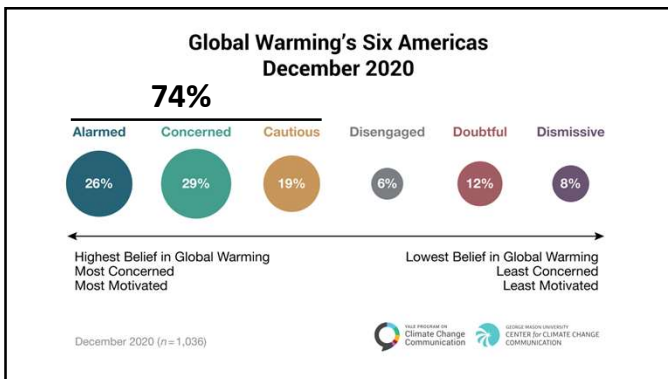
39



40



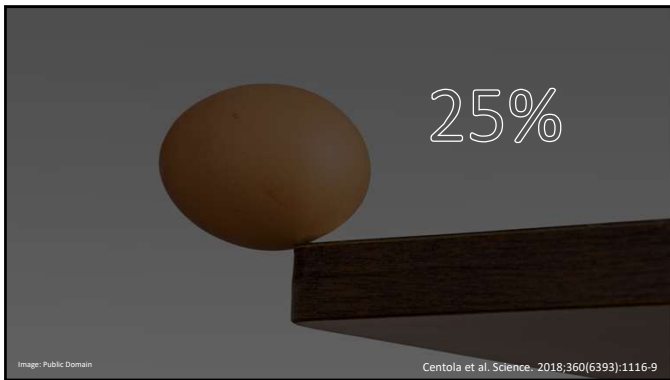
41



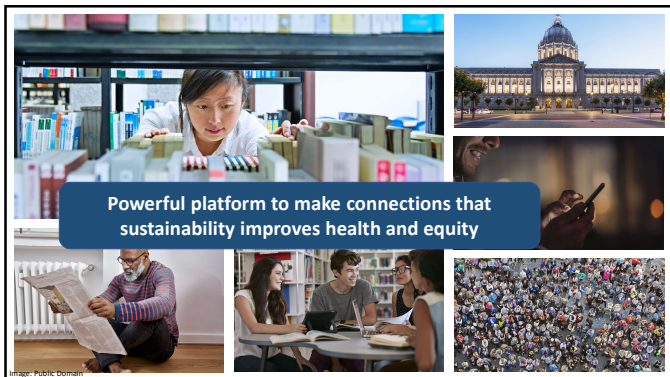
42



49



50



51



52

 A presentation slide with a dark blue background. On the left, a circular graphic contains the text "Quick Summary". On the right, a world map is composed of many small, colorful human figures. Below the map, a dark blue box contains the text "You can..." followed by a list of three items:

- ✓ Talk about health & equity benefits
- ✓ Connect sustainability to health & equity
- ✓ Add a climate lens to your work

53

 A presentation slide with a white background. On the left, a photograph shows healthcare workers in blue scrubs attending to a patient in a hospital bed. On the right, a hexagonal graphic contains a smaller version of the same photograph. Below the photograph, a black text box contains the text:

Action on climate change, including sustainability, is a prescription for improved health and equity.

54

Question 2

Following this talk, do you currently plan to do any of the following?

Join at
slido.com
#32583



55



56
