

DECISION SUPPORT FOR LAKE CONSERVATION & RESTORATION

DR. ROBIN ROTHFEDER

UWSP COLLEGE OF NATURAL RESOURCES

UW-EXTENSION CENTER FOR LAND USE EDUCATION

ADVANCED LAKE LEADERS GATHERING

SEPTEMBER 12, 2019

GOALS

Database

- **All Wisconsin lakes and shoreline parcels**
- **Public/Private and Developed/Undeveloped shoreline**
- **Key characteristics: lake conditions, property values, etc.**
- **Survey of lake/watershed groups**

Lookup Tables

- **Public-facing tool**
- **How much do clean lakes add to the tax base in my county?**
- **Where are the best parcels to target for land/lake conservation?**

Model

- **Prioritizing lakes for conservation and restoration**

SHORELAND ZONING

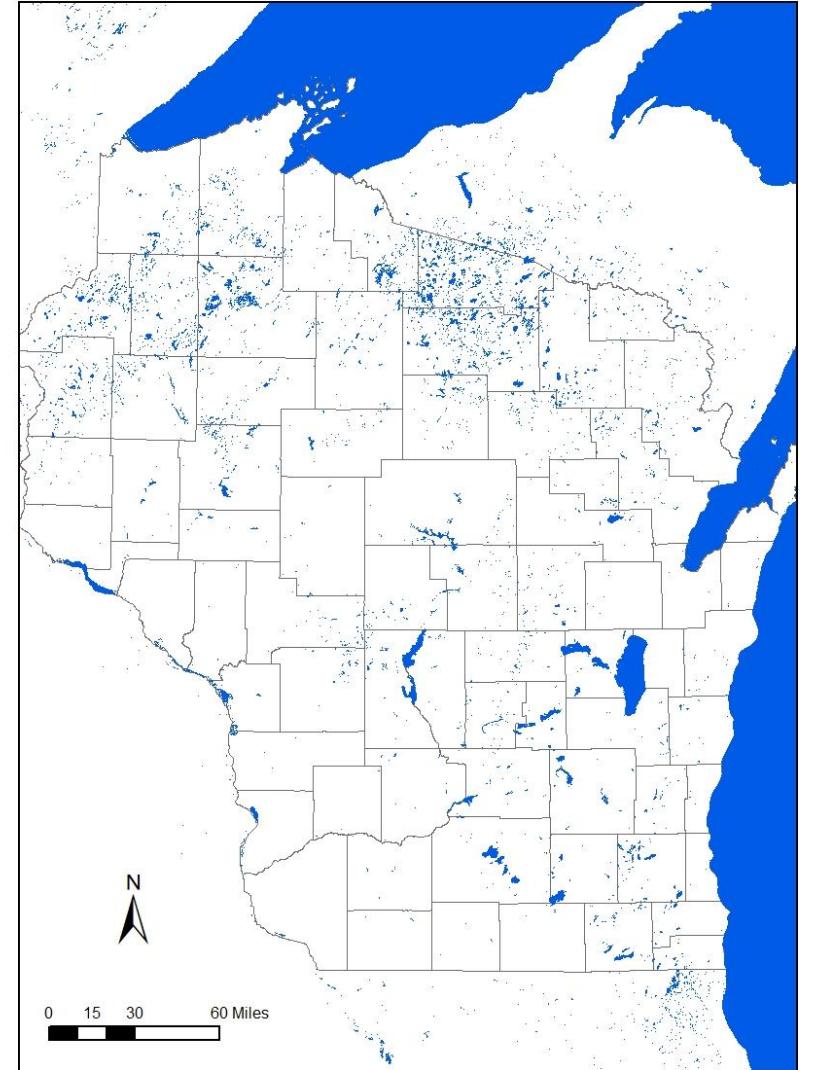
- **Significantly weakened in WI the last 5 years**
- **One-size-fits all**
- **Relaxed standards for:**
 - **Impervious surfaces**
 - **Setbacks**
 - **Near-shore building practices, dimensions, and variances**



ALTERNATIVES

**Opt-in tools and incentives
to protect and conserve
high quality lakes**

- **Land purchase**
- **Conservation easements**
- **Conservation development**



CONSERVATION POTENTIAL

How many **privately owned, undeveloped lakeshore parcels** that would be **candidates for conservation (or development)**?

How much **lakeshore frontage**?

- **Total mileage**
- **Parcel-scale distribution**

CHIPPEWA COUNTY

~500 lakes, ponds, reservoirs, etc.

~650 unique owners w/ undeveloped shoreland

~14,000 acres, ave. ~21 acres

Lakeshore frontage

- **~130 miles total, ave. ~1,080 feet**
- **333 parcels < 300 feet**
- **140 parcels 300 – 1,000 feet**
- **173 parcels > 1,000 feet**

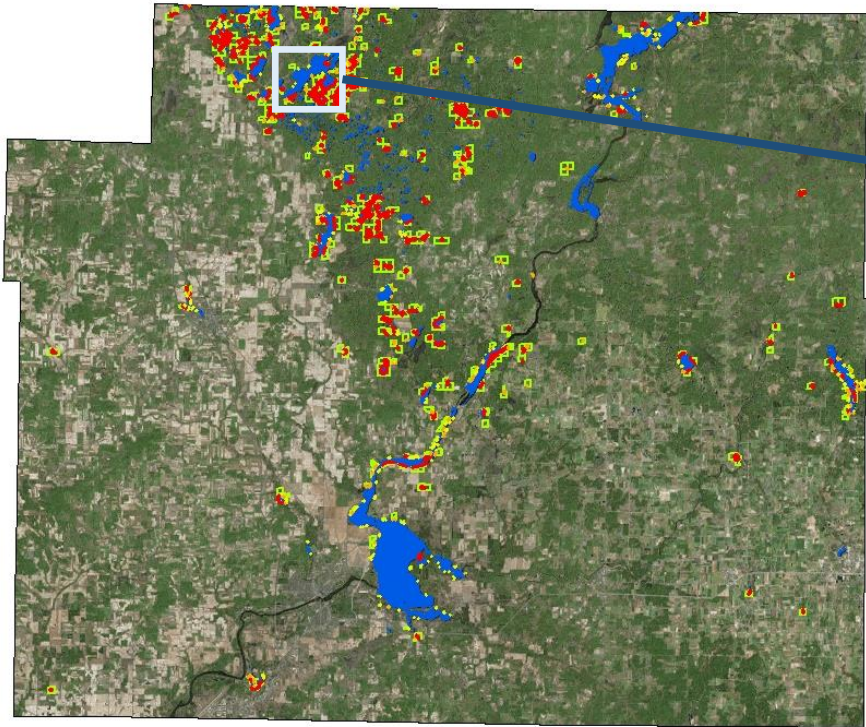
LONG LAKE

Chippewa County

- **> 500 acres, >2 miles of lakeshore placed under permanent easements in the early 2000s**
- **\$200k WI DNR lake protection grant**
- **Vacant lots list for over \$400k, improved lots assessed at ~\$700-\$800k**

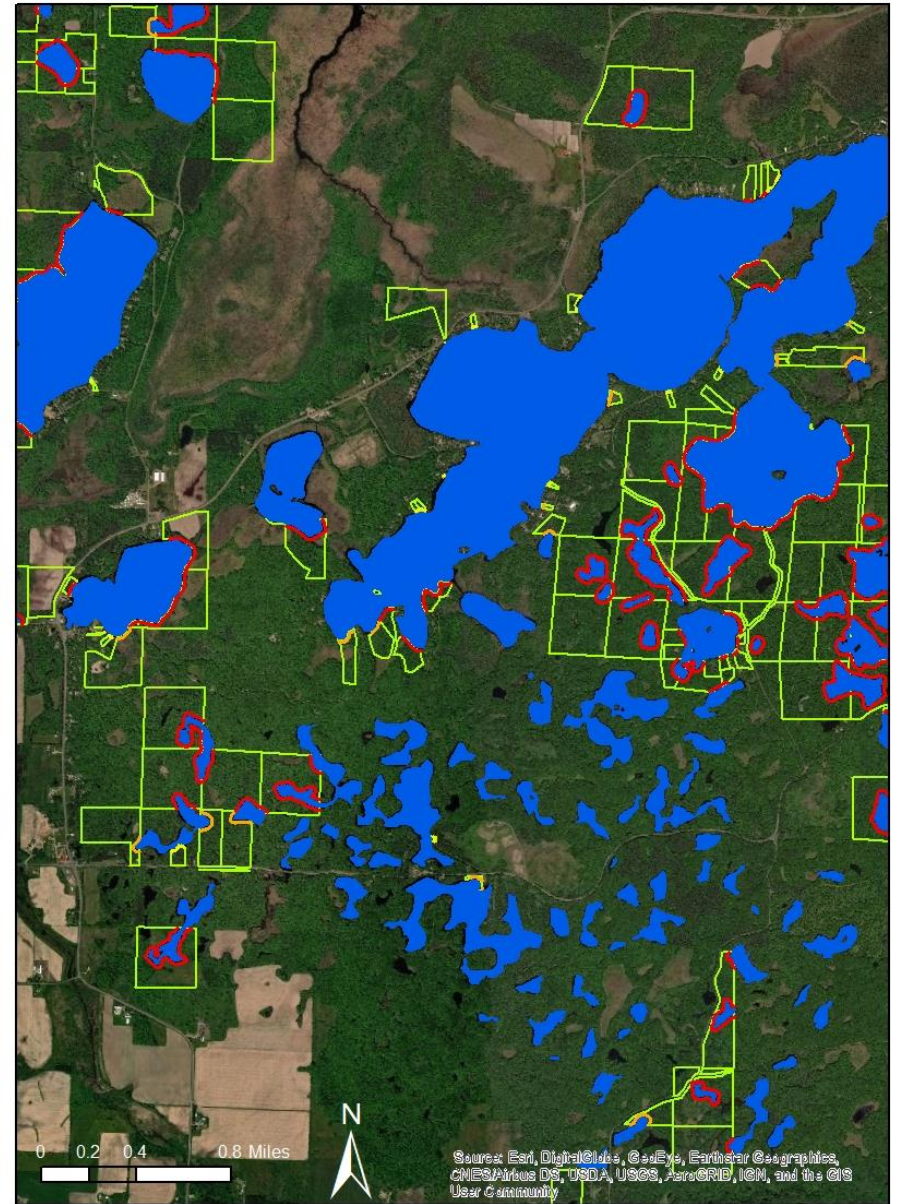
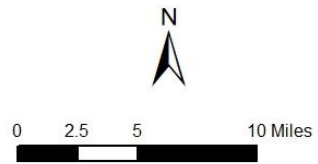


Chippewa County: Lakeshore Conservation Potential



Lakeshore Frontage

- < 300 ft.
- 300 - 1,000 ft.
- > 1,000 ft.
- Parcels



Source: Esri, DigitalGlobe, GeoEye, Earthstar Geographics, CNES/Airbus DS, USDA, USGS, AeroGRID, IGN, and the GIS User Community

ONEIDA COUNTY

~1,100 lakes, ponds, reservoirs, etc.

~2,500 unique owners w/ undeveloped shoreland

~30,000 acres, ave. ~12.5 acres

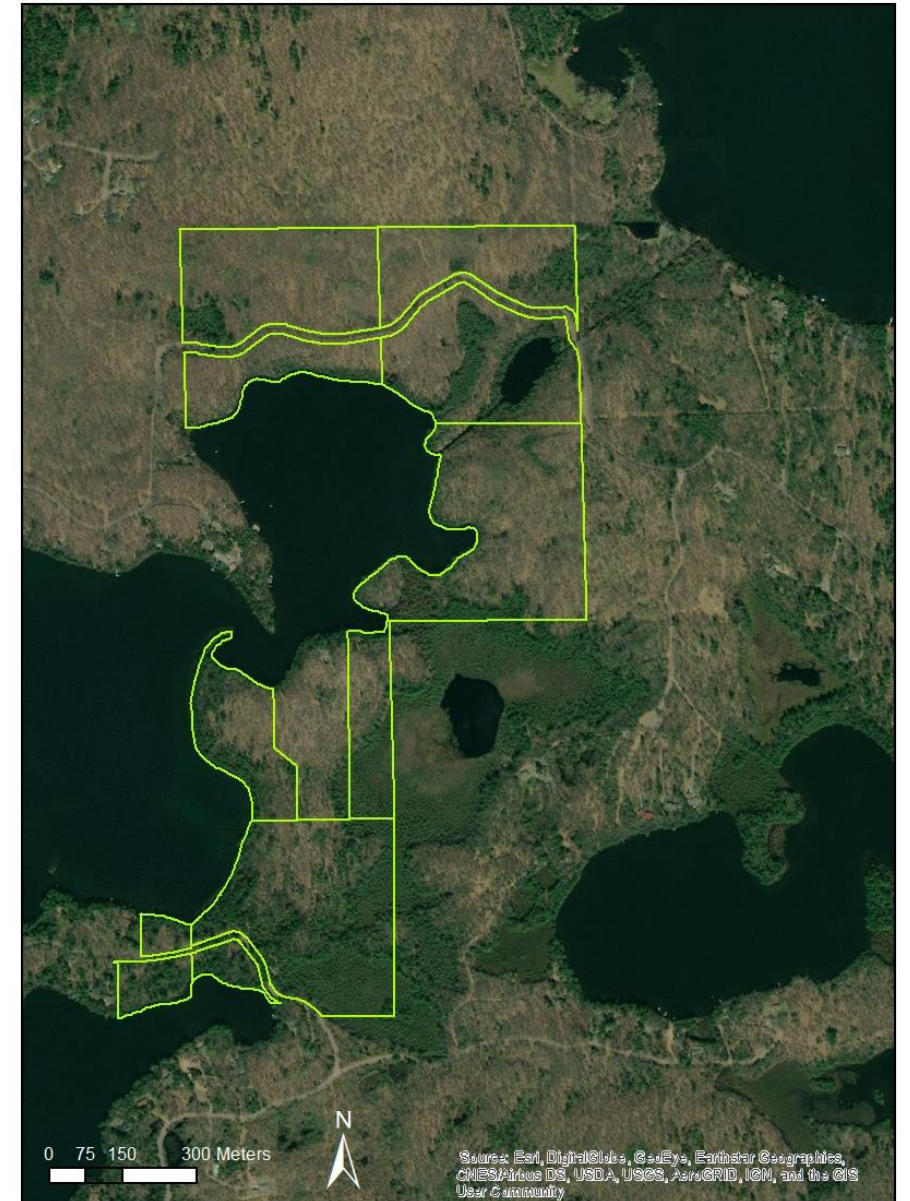
Lakeshore frontage

- **~260 miles total, ave. ~560 feet**
- **1,578 parcels < 300 feet**
- **538 parcels 300 – 1,000 feet**
- **352 parcels > 1,000 feet**

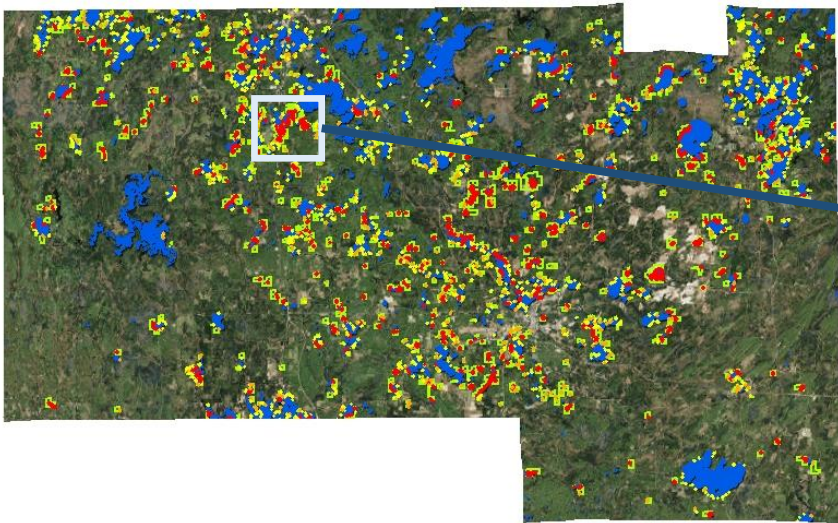
KATHERINE LAKE

Oneida County

- **> 400 acres, ~4.4 miles of lakeshore, placed under permanent easement in 2018**
- **Donated by Yawkey Lumber Company**
- **Remains open to hiking, hunting, fishing, and other recreation**

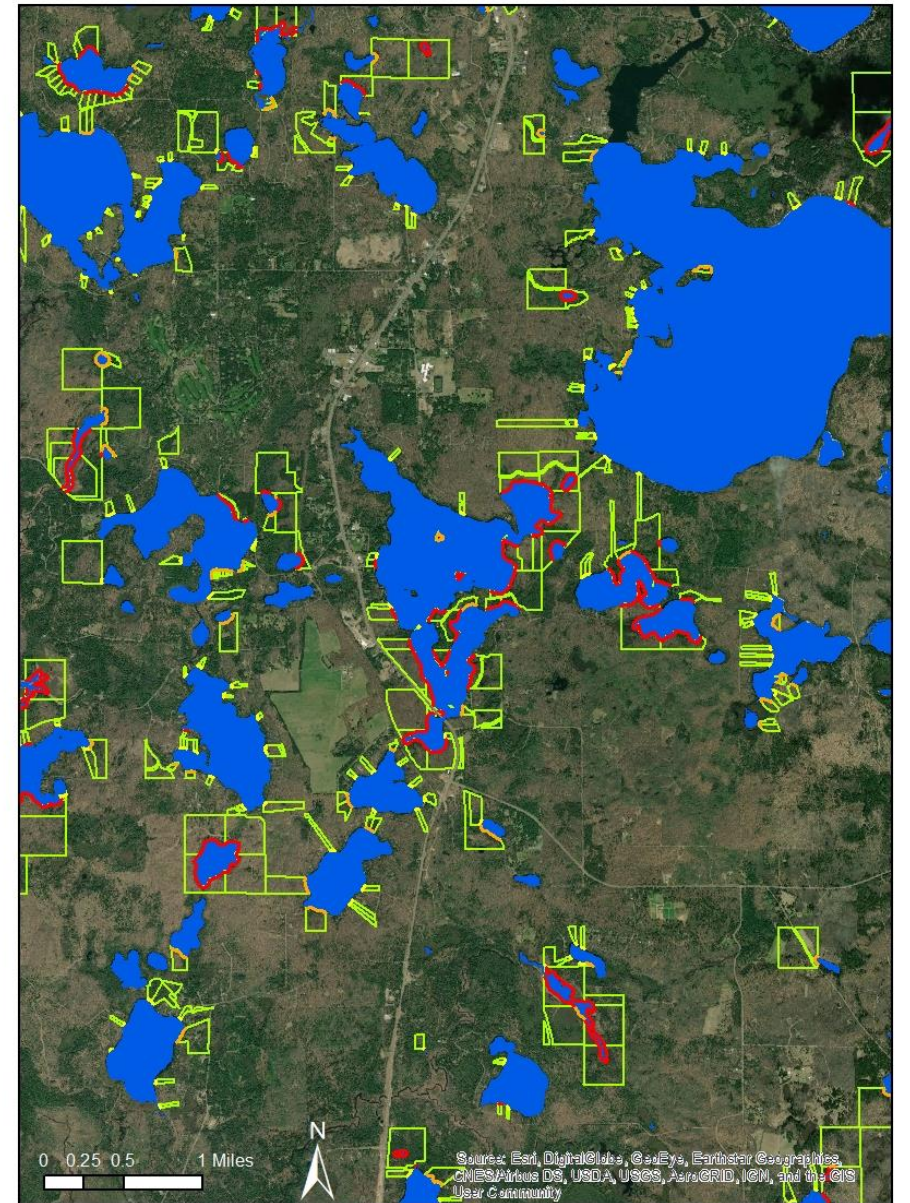
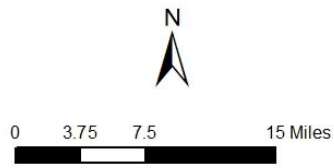


Oneida County: Lakeshore Conservation Potential



Lakeshore Frontage

- < 300 ft.
- 300 - 1,000 ft.
- > 1,000 ft.
- Parcels



CONCLUSIONS

WI counties have significant potential for lake and shoreline conservation and restoration

Data is available but could be further utilized

Decision support tools can help maximize the benefits of conservation and restoration



QUESTIONS?



Center for Land Use Education
College of Natural Resources
University of Wisconsin - Stevens Point

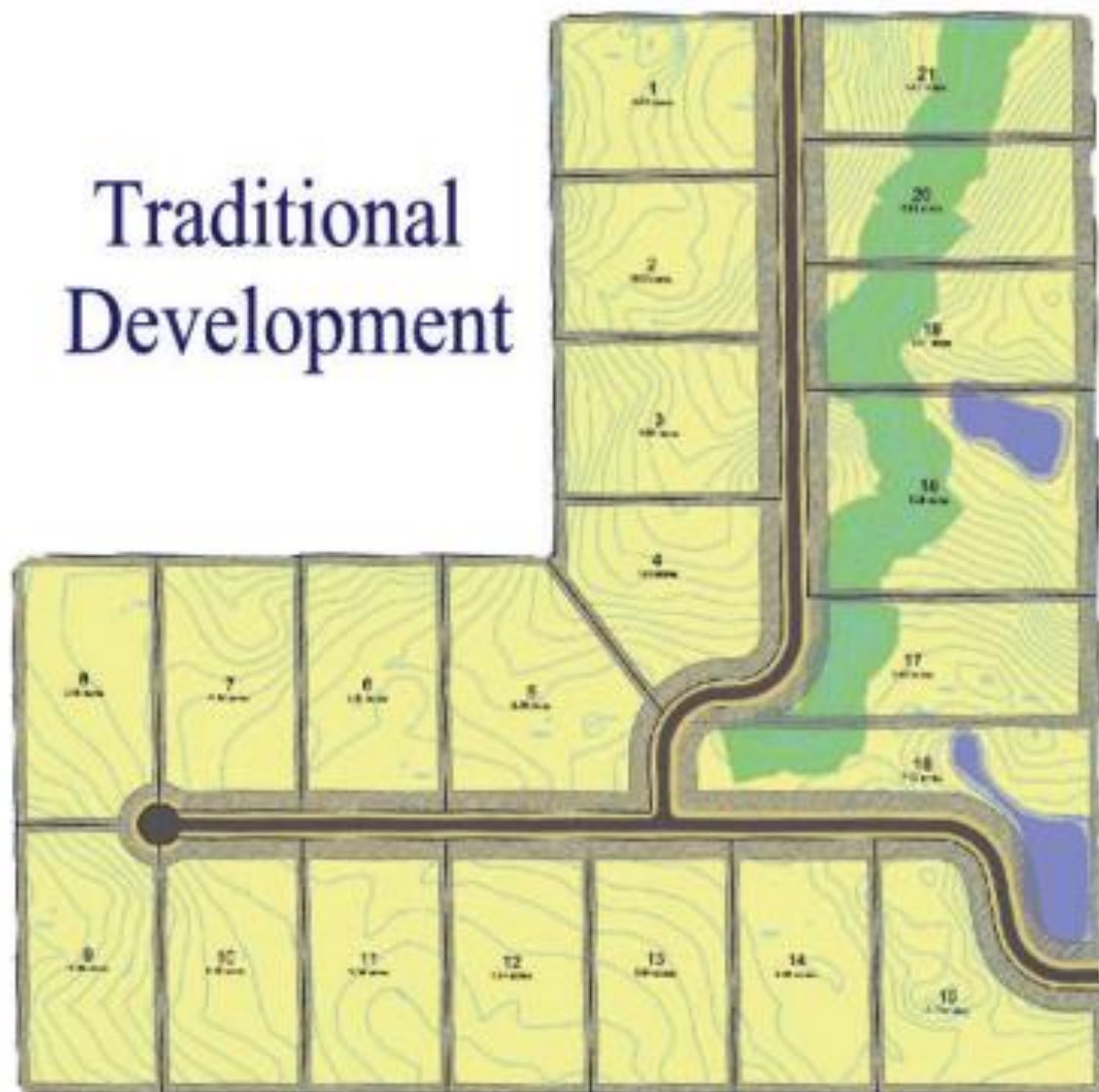
Dr. Robin Rothfeder

rrothfed@uwsp.edu

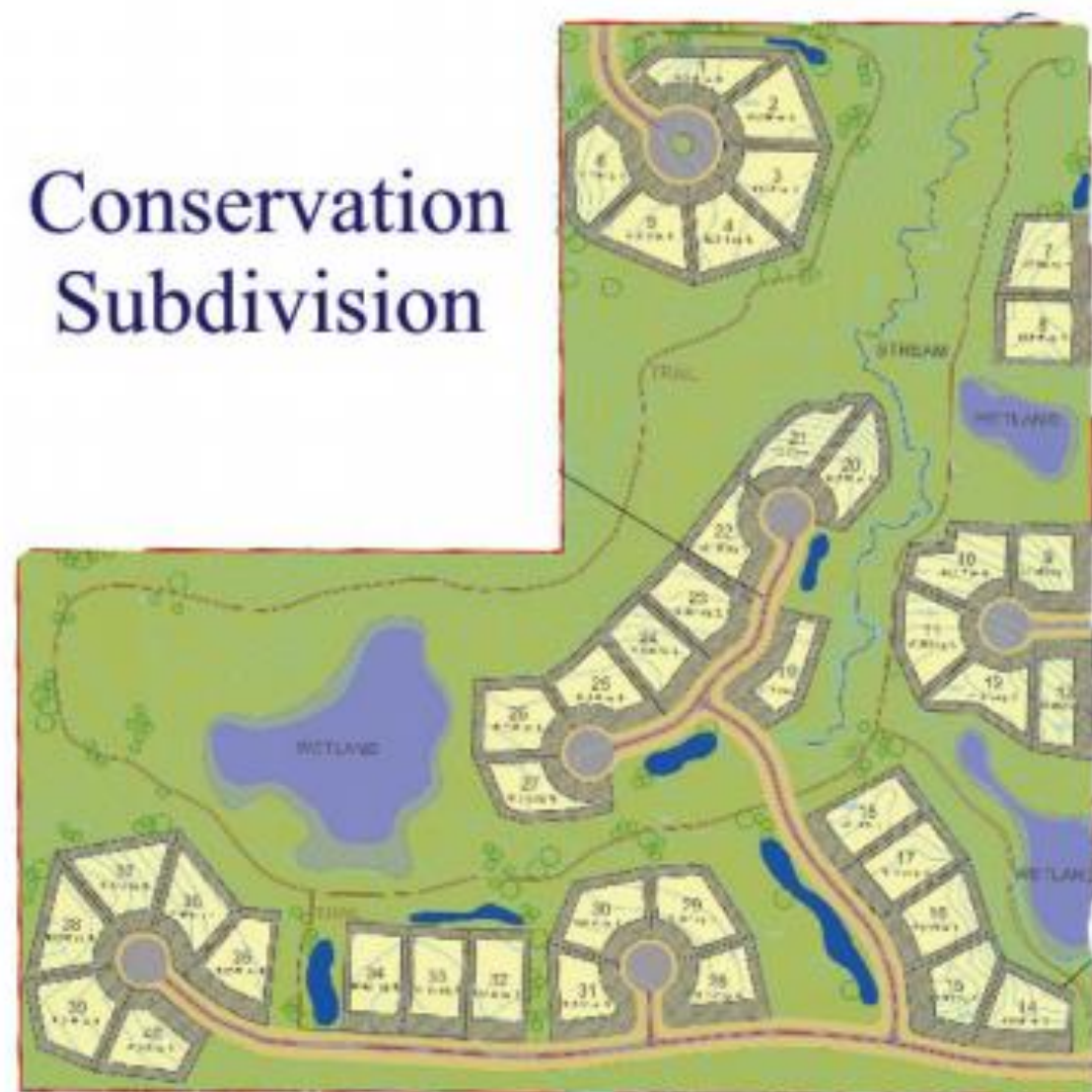
715-346-4091

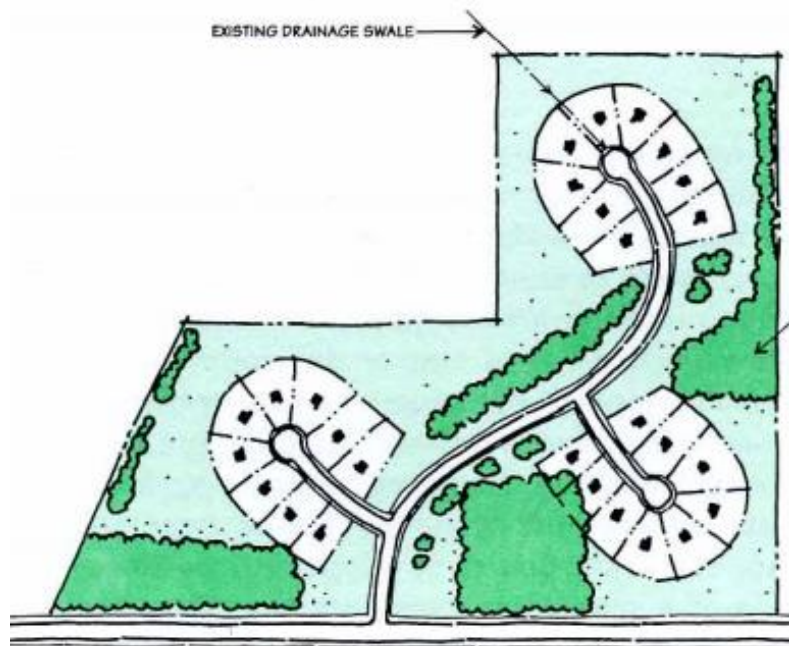


Traditional Development



Conservation Subdivision





CHARACTERISTICS

Clustered compact lots

- Density neutral

Common open space

- Ordinances typically require a minimum of 40-60%

Re-ordering of conventional development processes

- ID conservation land *before* locating houses, streets, and utilities

BENEFITS

Conserve land / open space,
protect natural resources
and environmental quality
(e.g. **lake shoreline**)

Maintain rural / agricultural
identity, values, and economy

Reduce construction costs,
sell faster, **increase** land
values, **receive** density bonus

