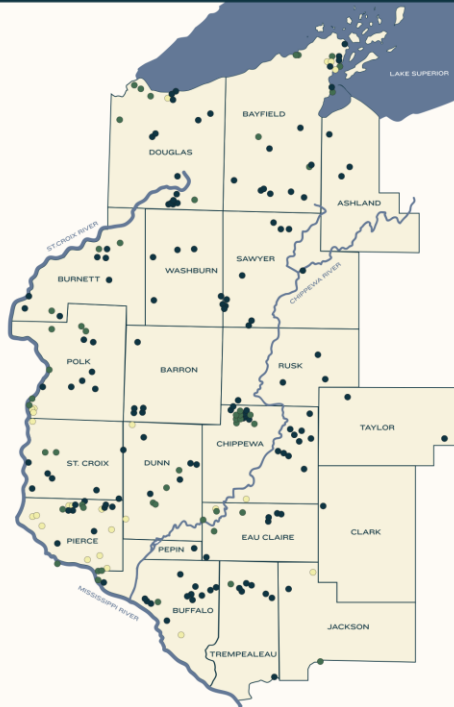


CONSERVATION PROJECTS



206
CONSERVATION
EASEMENTS

49
PUBLIC
RECREATION
AREAS

30,000
ACRES
CONSERVED

800
ACTIVE
MEMBERS
& VOLUNTEERS



NATURAL HABITAT

Projects covering prairie, forest, wetland, rivers and lakes protect diverse ecological communities serving the habitat needs of wildlife, fish, birds, and plants.



OUTDOOR RECREATION

Privately and publicly owned projects provide opportunities for public nature-based outdoor activities including hiking, fishing, hunting, cross-country skiing, snowshoeing, and nature study.



FARMLAND

Diverse open space projects protect high quality soil resources, Community-Supported Agriculture farms, orchards, vineyards, and scenic viewsheds.

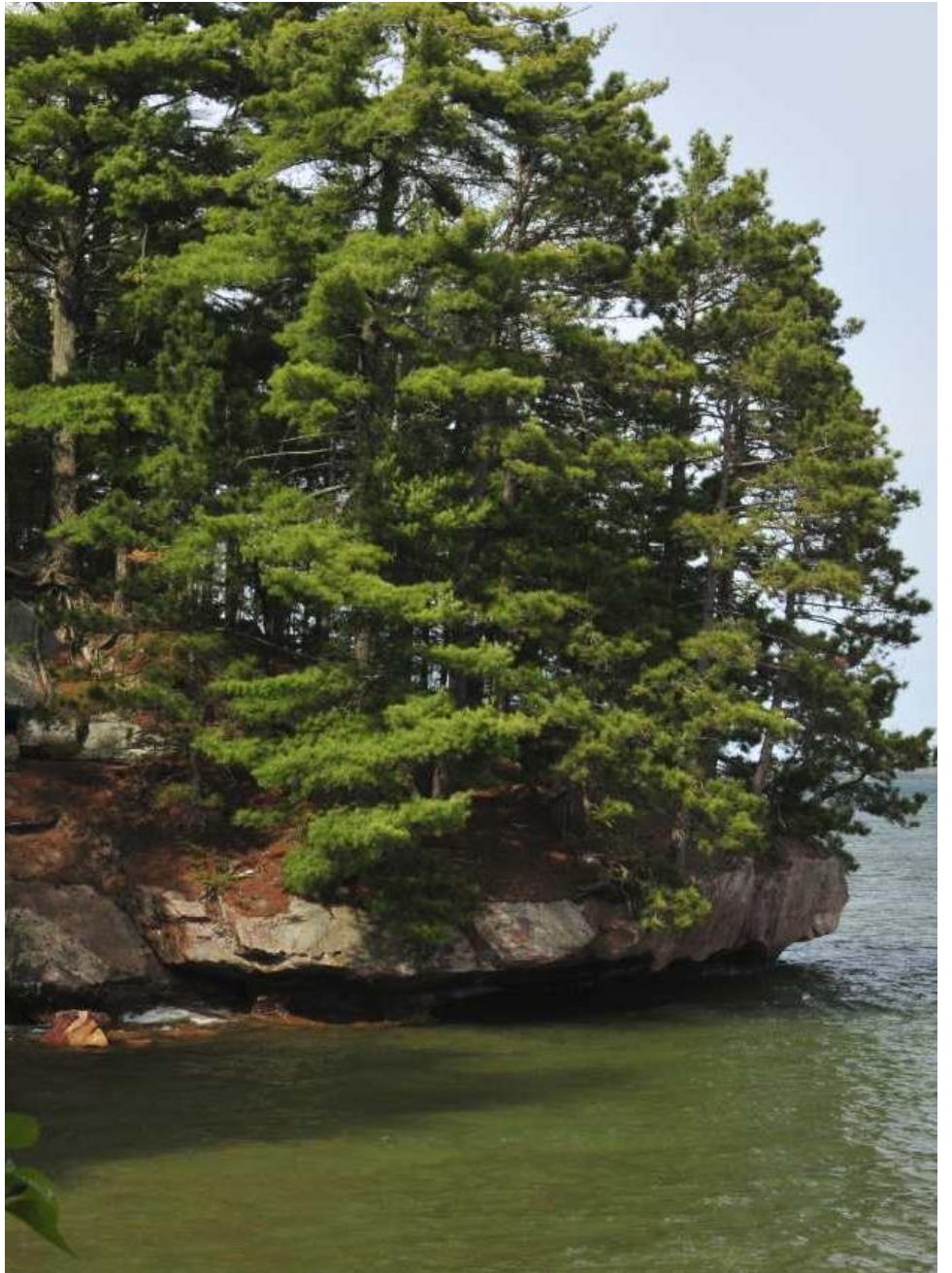


Conserving Wisconsin's natural legacy for everyone... forever.

WISCONSIN
LANDMARK
CONSERVANCY



Conserving Wisconsin's natural legacy for everyone... forever.





Protecting Private Land:



**Conservation Agreements,
Land Acquisition with
willing Private Landowners**

How best to advance our Conservation Vision

Targeted

Community Partnership

Climate Resiliency

Conservation Complexes

Recreation

Prioritizing Land Donation

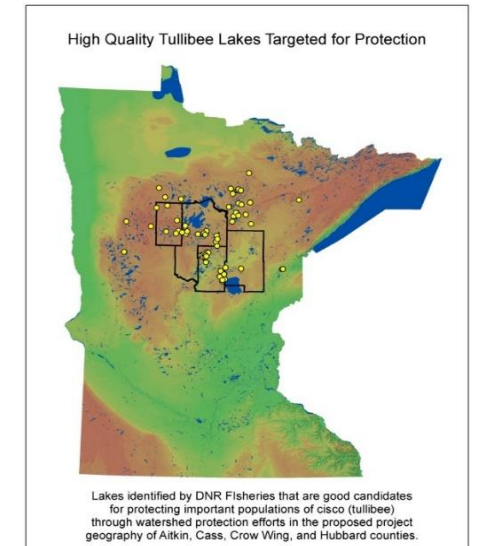
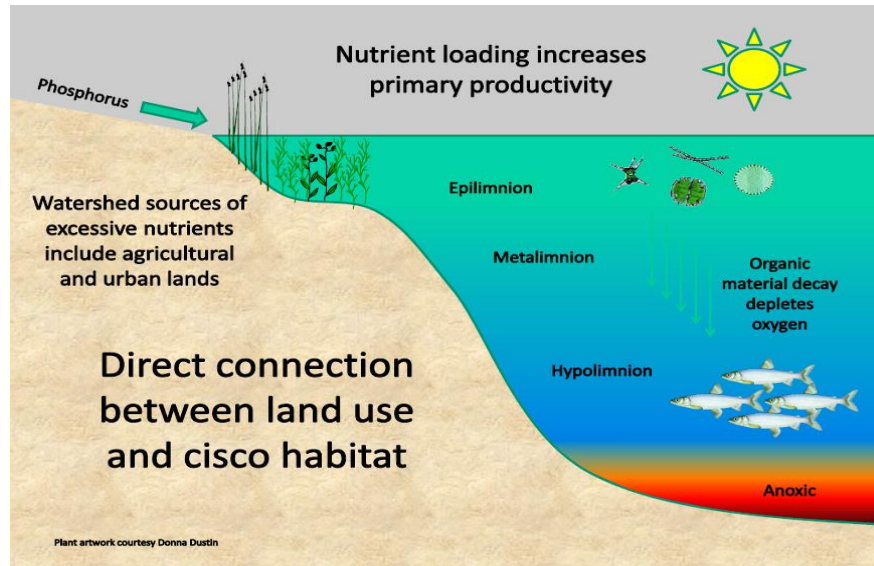
Access Land Owner Readiness

Apply both science and local knowledge



When developing a protection effort it helps to be:

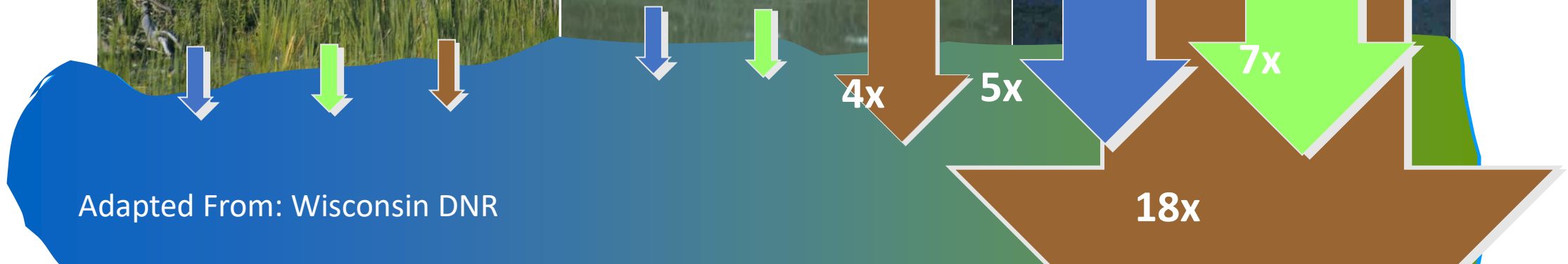
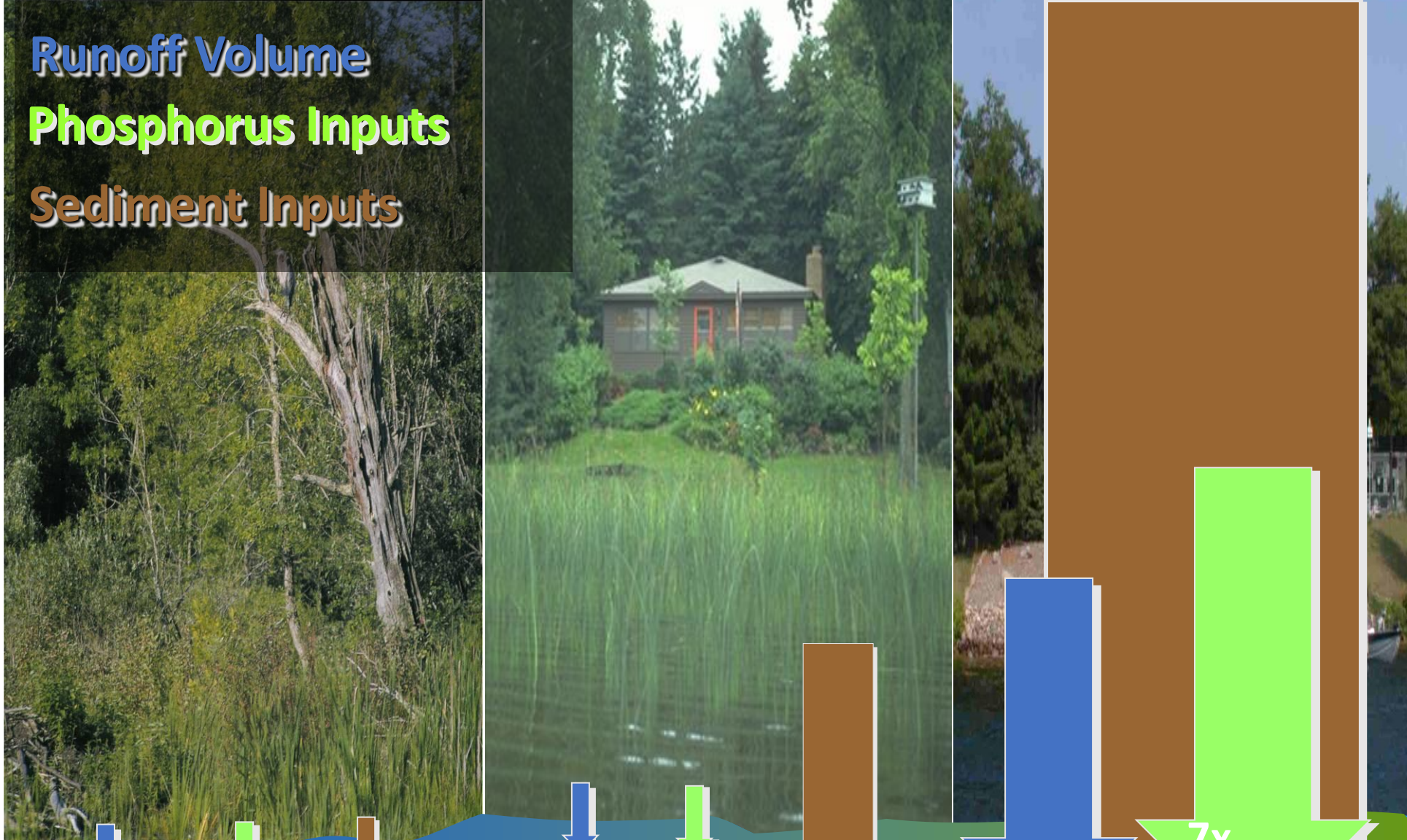
Targeted,
Proactive & with a clear message



Runoff Volume

Phosphorus Inputs

Sediment Inputs

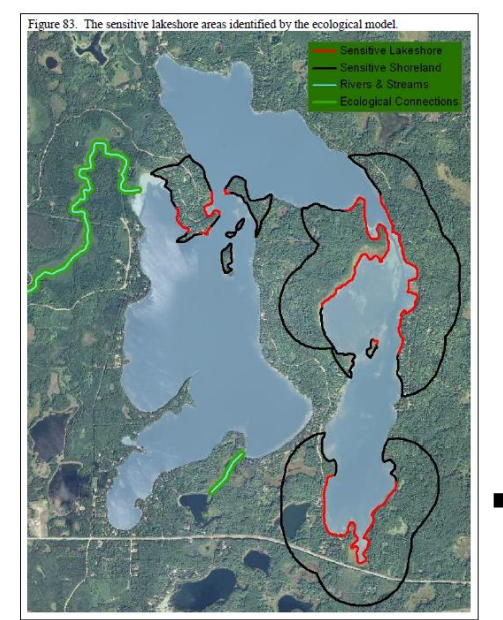


Adapted From: Wisconsin DNR

N
gro
vo



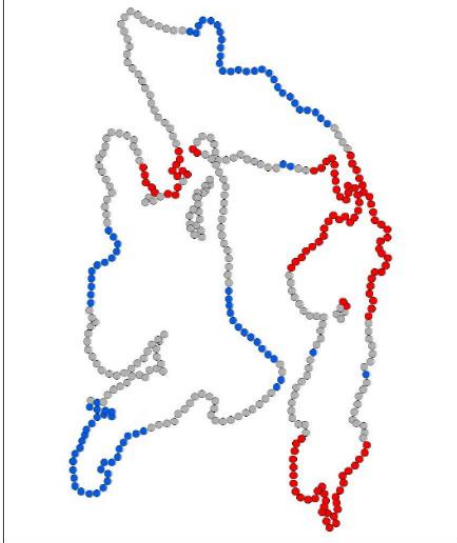
Identifying the best parcels to protect water quality



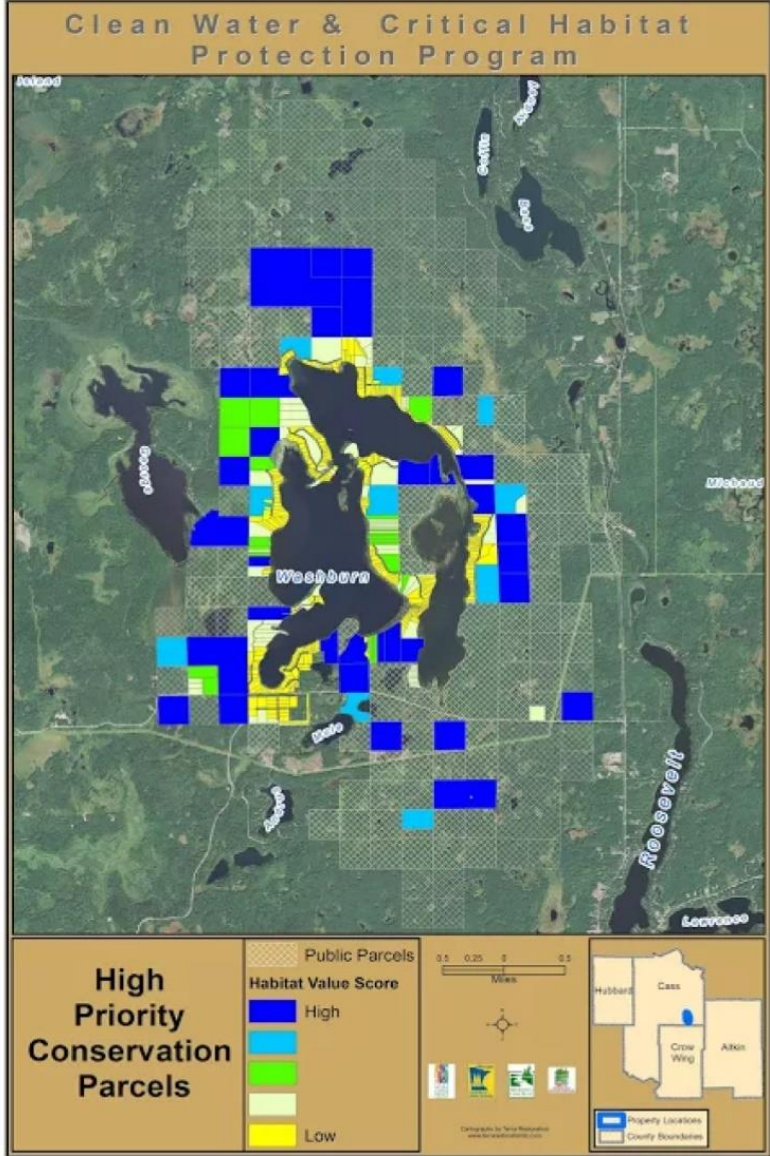
Examples of Criteria

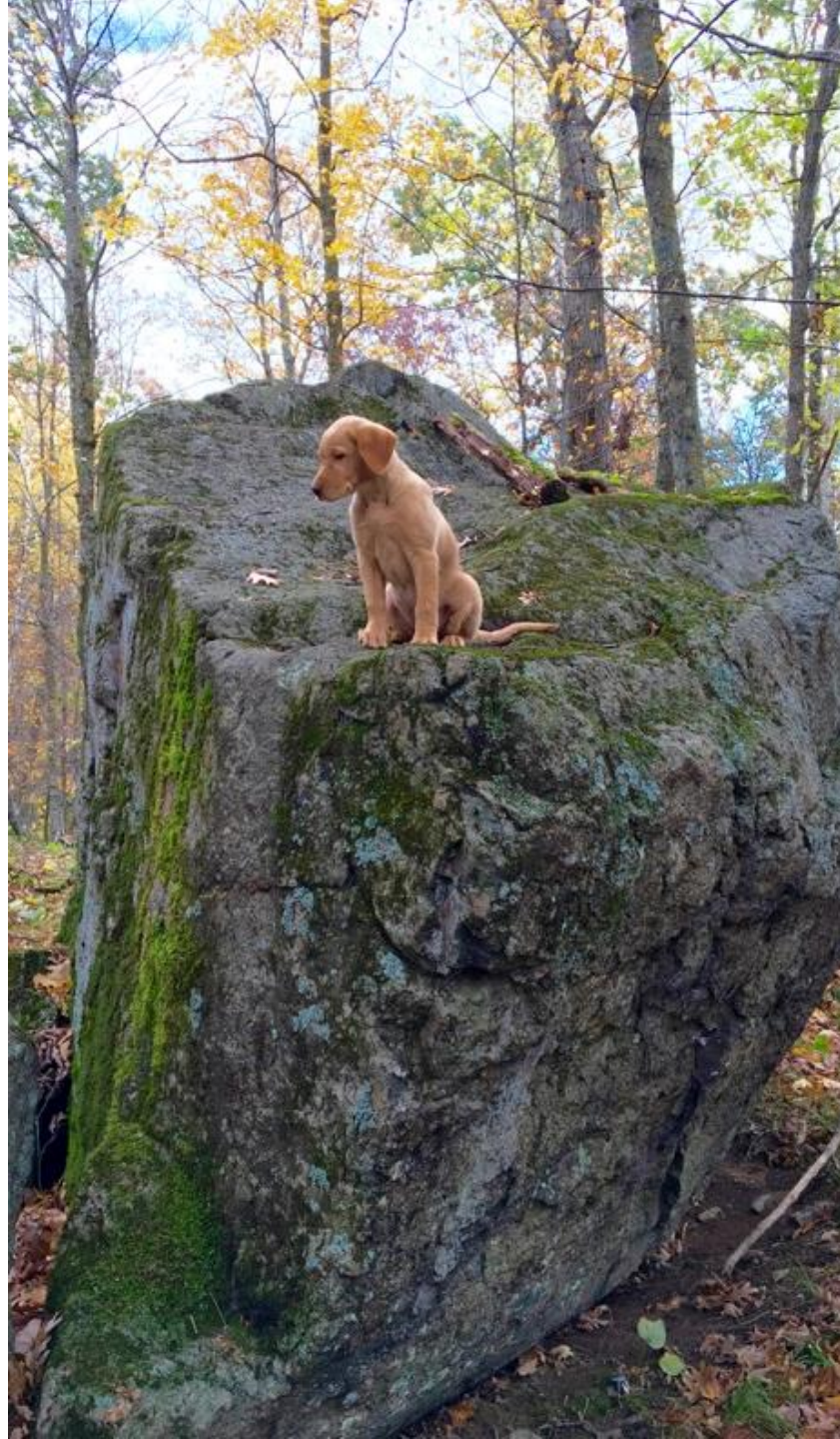
- Size of Parcel
- Sensitive Shoreland
- Adjacent to Protected Land
 - Forest
 - Wetland

Figure 82. GIS-identified clusters of points with similar total scores. Red areas are those with high scores (i.e., areas of highly sensitive shoreland).



**Clean Water Critical Habitat
Protection Program
\$ \$9,382,000 Million in Support
2014 - 2017**





**She Can't Protect Them
From Global Warming**

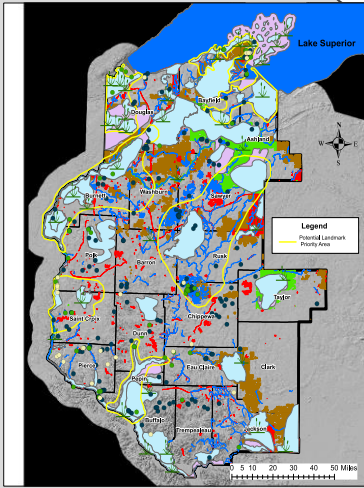
**You Can Help
Plant a Tree**

Trees capture carbon from the atmosphere and reduce the impacts of global warming. Each tree you plant makes their arctic environment a colder and safer place to live.

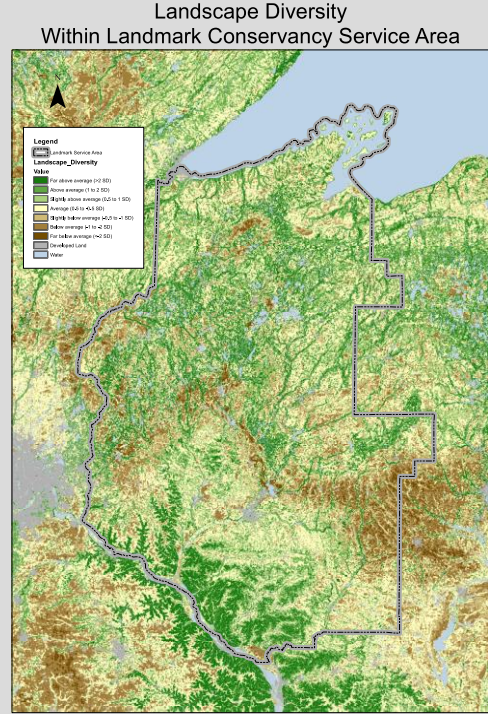


Prioritization Process – Climate Resiliency

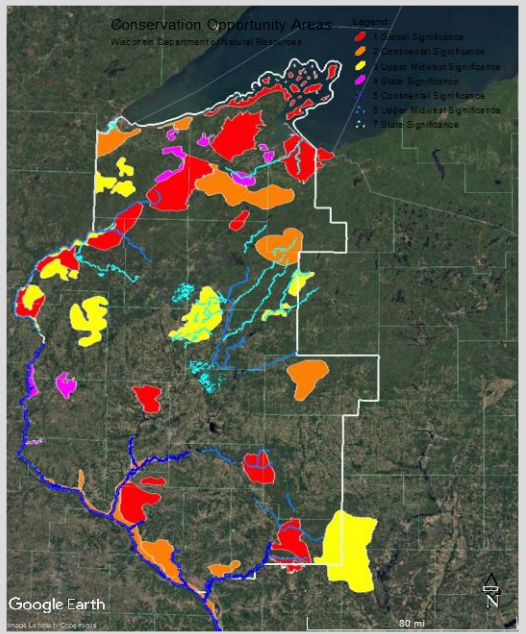
All Layers Combined



Landscape Diversity Within Landmark Conservancy Service Area

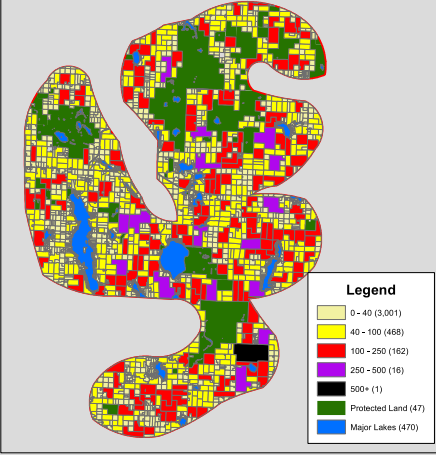


Diversity Data Source: The Nature Conservancy
1:1,800,000

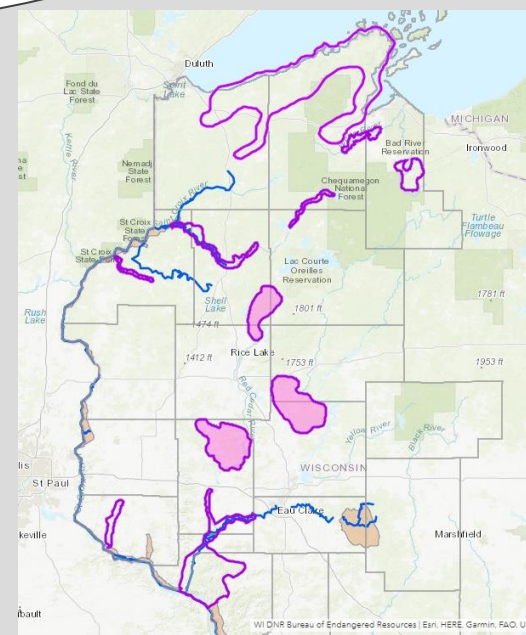


Unprotected Land Within Straight Lake O.A.
Size Class (acres) of Unprotected Land

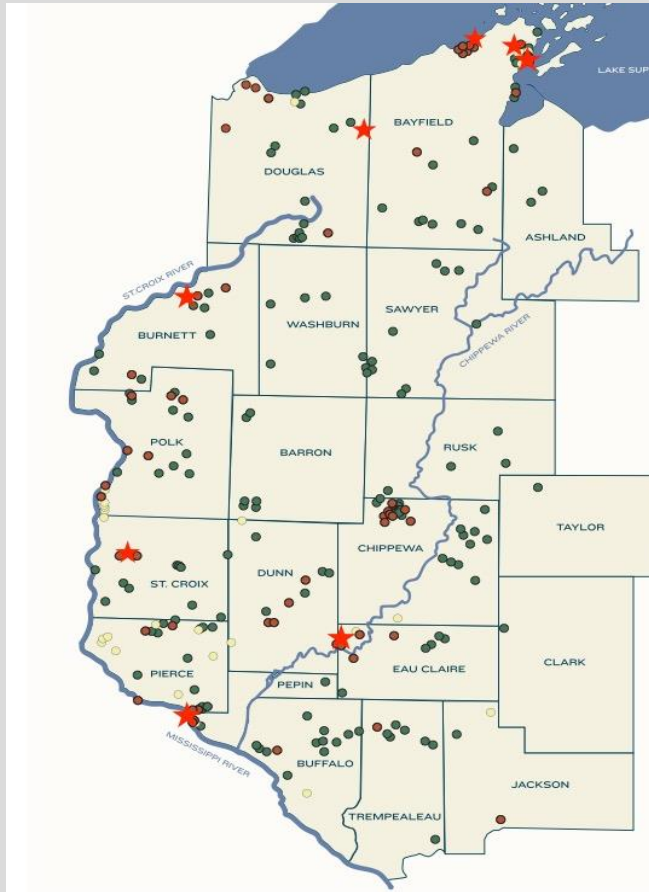
| Parcel Size | Acres | # Parcels |
|--------------|---------------|--------------|
| <40 | 26,350 | 3001 |
| 40-100 | 30,498 | 468 |
| 100-250 | 25,017 | 162 |
| 250-500 | 5,230 | 16 |
| 500+ | 825 | 1 |
| Total | 87,920 | 3,648 |



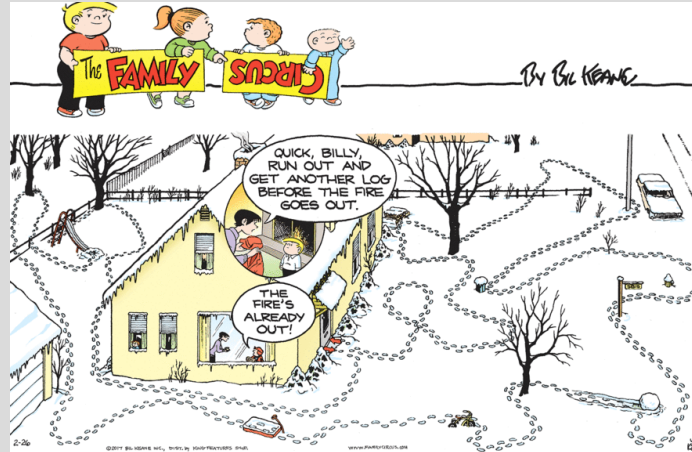
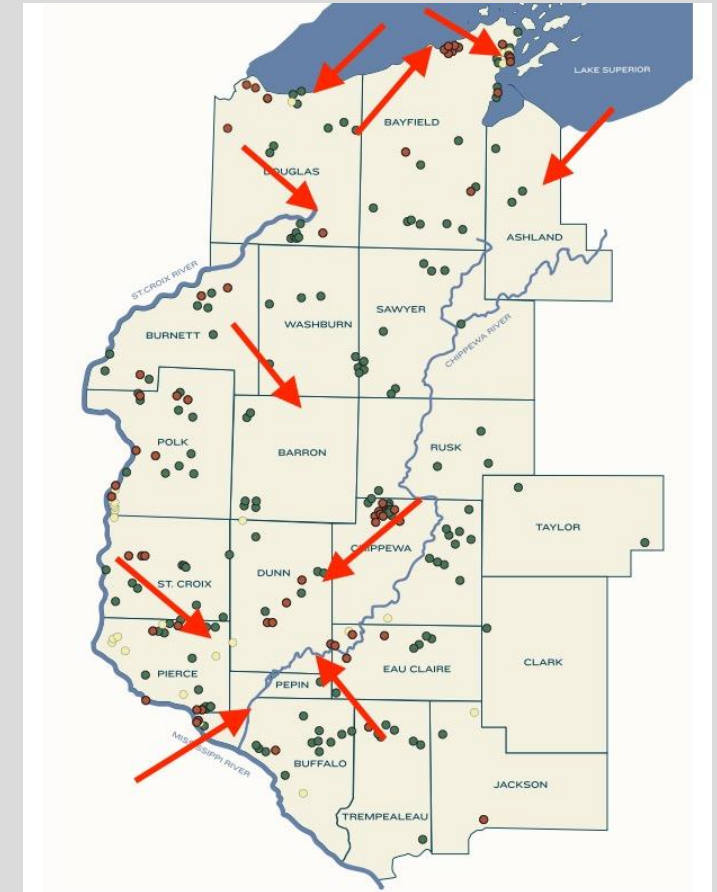
0 1 2 4 6 8 Miles



Landmark FY 2018-2019 Projects

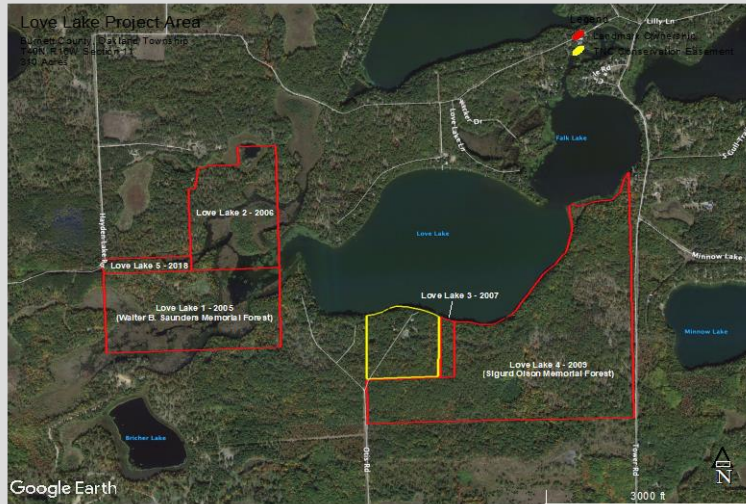


Landmark Pending Projects FY 2019-2020

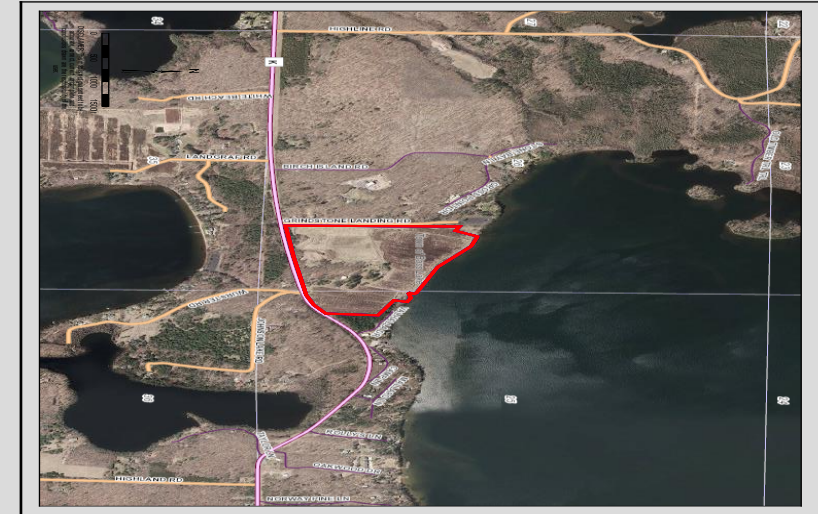


Examples of Lake Protections Projects

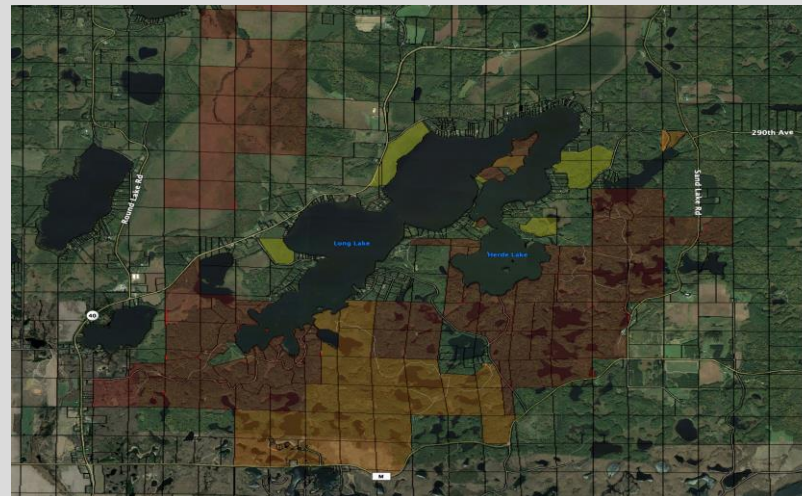
Love Lake



Grindstone Cranberry Bog



Long Lake



We are
working to
protect the
future

