

Stories from an Active Lake District

Lake Helen, Portage County, WI



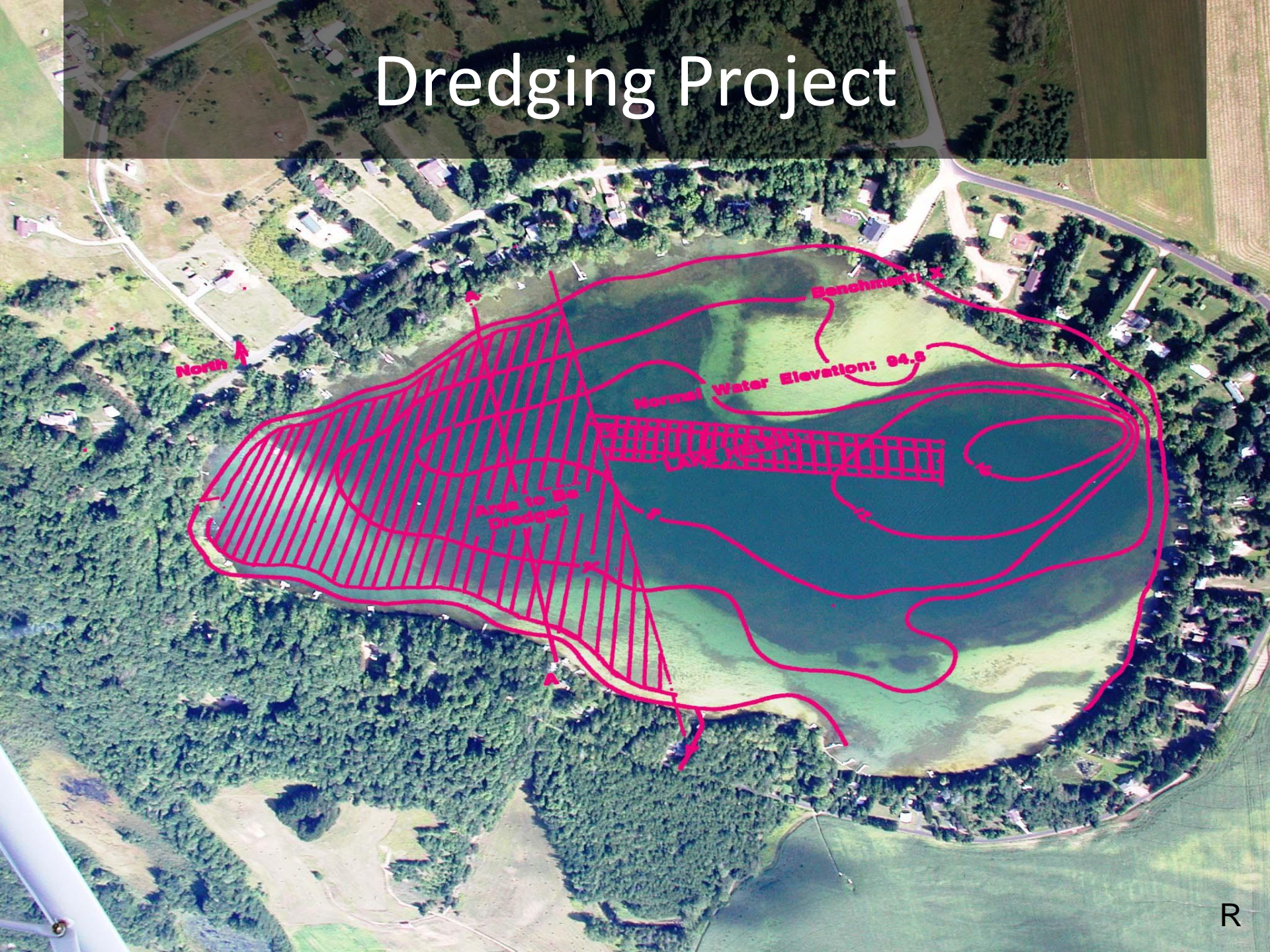
Rob Hvizdak
Commissioner
Lake Helen P&R District

Paul Skawinski
Regional AIS Coordinator
Golden Sands RC&D

Lake Helen



Dredging Project



Lake Helen - Lake Protection & Rehabilitation District

[Home](#)[Activities](#)[Clean Boats - Clean Waters](#)[Aquatic Plants](#)[Fish](#)[General Info](#)[Contact Us](#)[Com](#)[M](#)

Clean Boats - Clean Waters

The Lake Helen Lake Protection and Rehabilitation District has brought the Clean Boats - Clean Waters program to Lake Helen. It was presented and discussed at the May 2009 Annual meeting.

Volunteers have been trained to work at the boat launch to remind boat owners to:

- **INSPECT** boat, trailer and equipment and **REMOVE** plants, animals and mud before leaving the landing
- **DRAIN** all water from boats, motor, live wells, bilge, bait buckets and other containers before leaving the landing

Help from Golden Sands RC&D

July 2008 - Lake Helen Chairman contacts RC&D office:
What kinds of good plants do we have in the lake?



2008 – Free and Clear

Portage County Eurasian watermilfoil (2008)

➤ 11 lakes

Portage County curly-leaf pondweed (2008)

➤ 7 lakes

No invasive plants documented in Lake Helen

Split up four boats to gather as many different plant species as possible



Back at the boat landing...



Common waterweed
Northern watermilfoil
Coontail
White water crowfoot
Water celery
Eurasian watermilfoil

White-stem pondweed
Fries' pondweed
Flat-stem pondweed
Sago pondweed
Floating-leaf pondweed
Slender naiad

Muskgrasses (*Chara*)
Variable pondweed
Illinois pondweed



Rapid Response – Hand-pulling



Rapid Response – Hand-pulling



2009 hand pulling



Spring 2010 Hand-pulling



2010 Hand-pulling



Summer 2010 – Options

Underwater video to show Lake District

Board of Commissioners

Continue hand-pulling?

Herbicide application?

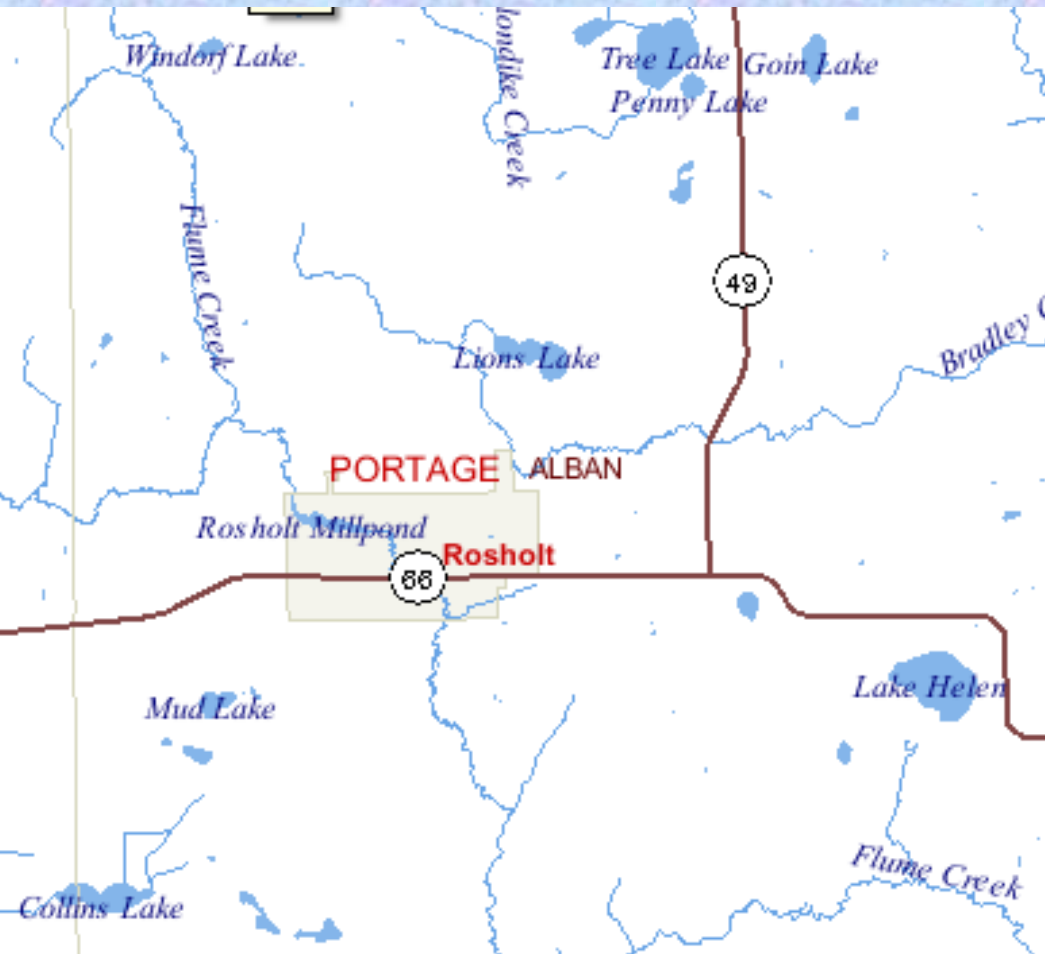
Integrated management?

2010 Small-scale herbicide treatment

Less than $\frac{1}{4}$ acre

Granular formula (2,4-D)

Help at Collins Lake, Tree Lake



5 miles

Collins Lake – EWM discovered, also in 2008, very low population

Tree Lake – No EWM, but heavy use



On a related note...

New EWM Discoveries 2008 – 2010 in Portage County

Lake Helen – 5+ hand-pulling efforts, herbicide needed

Collins Lake – 4 hand-pulling efforts, **not detected by latest visual survey of EWM sites**

Wolf Lake – 6+ hand-pulling efforts, <10% of original sites remain

Rocky Run Wetland – 2 hand-pulling efforts, **not detected by latest visual survey of EWM sites**

Sunset Lake – 2 hand-pulling efforts, lake group elected for herbicide

Pickereel Lake – 1 hand-pulling effort, herbicide needed

CBCW

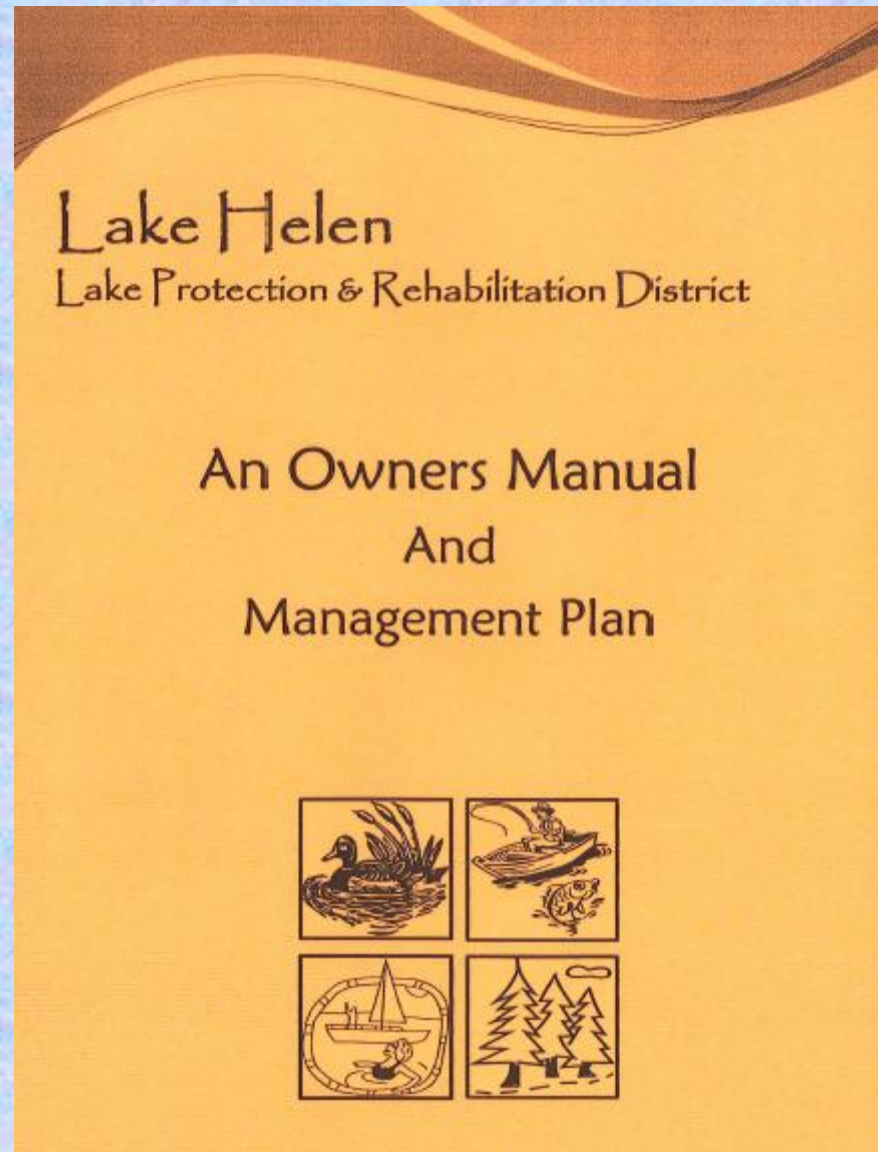


Distribute AIS info to community

Kids at fishing tournament
newspaper articles



Educating Riparian Property Owners



Lake Management Plan Oct 2008

2008

Lake Helen Management Plan



Lake Helen Planning Committee

10/1/2008

Lake Walk

Designed to educate community about the lake and history of the surrounding area

Lake Helen District Welcomes You To Helena's Frog Walk



Hi, my name is Helena. Lake Helen has provided a great home to me and many of my friends and relatives for many generations. I was told that Lake Helen was born when glaciers that covered much of Wisconsin melted. That was around 10,000 years ago.

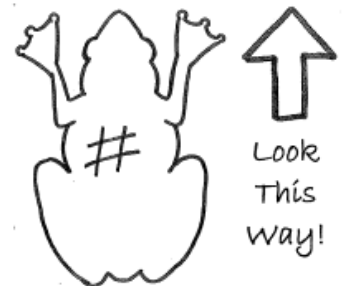
Although Lake Helen claims to be only 5,000 years old, we all know better. Rumor is Lake Helen was named after the Huntington family's daughter Helen. Helen reportedly drowned while swimming in the lake. All of us in the animal kingdom think that's sad, but a nice way to honor her memory, and I am proud to share her name.



Join me for a hop around the lake and I'll show you some of the natural beauty Lake Helen provides and even some interesting historical points when you humans moved into the neighborhood. The entire hop is about 2 miles. You can walk or ride a bike if hopping is not your thing.

Look for my portrait painted on the road and the number on my back will match the story in the brochure. My body will point you in the direction of what to look at each stop. There is a small map on the back of each brochure to let you know where you are, along with some suggestions on how to make this journey safe and fun for everyone.

The first stop is right where you are standing. Just open the brochure and we'll get this adventure started.



Fish Stocking

Walleye

Largemouth bass

Yellow Perch







Portage County EWM Meeting Oct 2010

Idea started by Lake Helen and Lake Emily groups

Bring together lake representatives from across Portage County to discuss successes and challenges

Spring 2011 meeting to come – official county lakes group formation in future?



Sunset over Lake Helen