

Wisconsin Lakes and Access to Navigable Waters

Wisconsin Lakes Convention
April, 2011







RIGHT
OF WAY
ENDS
HERE













**PRIVATE
PROPERTY**
NO TRESPASSING



A photograph of a forest with many thin trees and a body of water visible in the background. The trees are mostly bare, suggesting late autumn or winter. The ground is covered in fallen leaves. The text is overlaid on the lower half of the image.

NR 1.92, Wis. Adm. Code

Requesting Approval to Vacate
Public Access to Navigable Water



NR 1.92 Process



NR 1.92 Process

- Town provides resolution, maps



NR 1.92 Process

- Town provides resolution, maps
- Initial DNR Review



NR 1.92 Process

- Town provides resolution, maps
- Initial DNR Review
- Public notice, comment period



NR 1.92 Process

- Town provides resolution, maps
- Initial DNR Review
- Public notice, comment period
- Possible hearing



PUBLIC
ACCESS



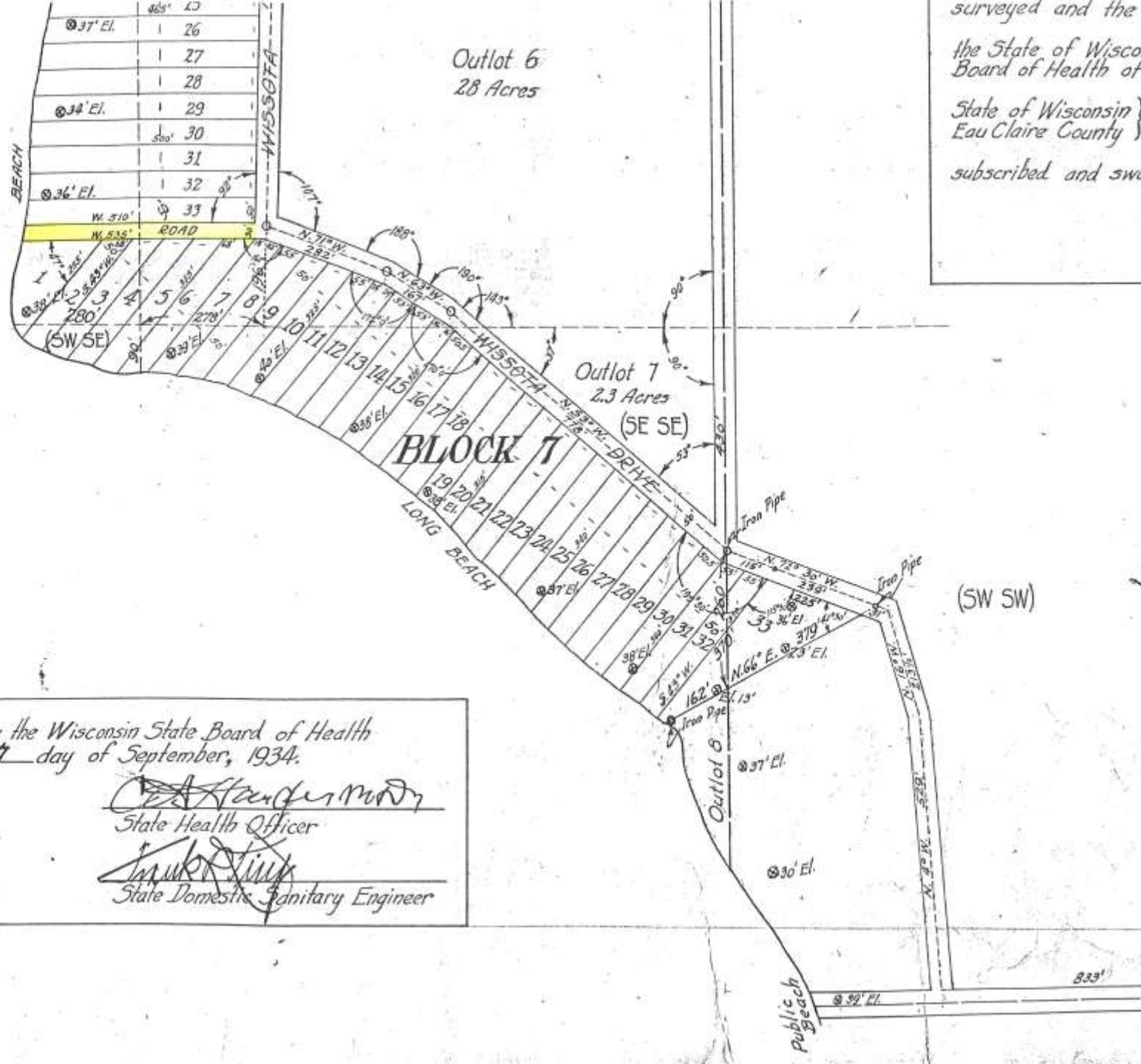


NR 1.92 Process

- Town provides resolution, maps
- Initial DNR Review
- Public notice, comment period
- Possible hearing
- Findings of Fact, Conclusions of Law, and Order



surveyed and the
 the State of Wisconsin
 Board of Health of
 State of Wisconsin
 Eau Claire County
 subscribed and sworn



Approved by the Wisconsin State Board of Health
 this 7 day of September, 1934.

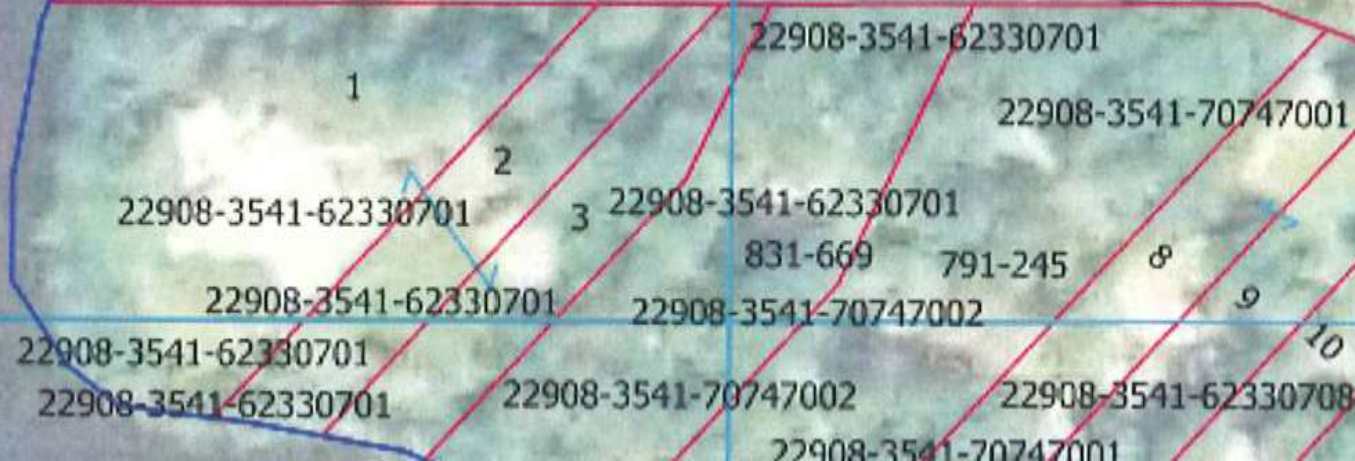
Charles H. Mundy
 State Health Officer

Frank J. ...
 State Domestic Sanitary Engineer

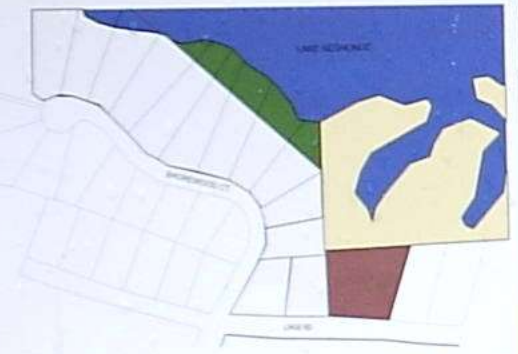
178TH ST

22908-3541-62330623	24	22908-3541-62330623
22908-3541-62330625	25	22908-3541-62330625
22908-3541-62330625	26	
22908-3541-62330625	27	22908-3541-62330625
22908-3541-62330625	28	22908-3541-62330625
22908-3541-62330629	29	22908-3541-62330629
22908-3541-62330629	30	22908-3541-62330629
22908-3541-62330629	31	22908-3541-62330629
22908-3541-62330629	32	22908-3541-62330629
22908-3541-62330629	33	22908-3541-62330629

Road
access



**PUBLIC ACCESS
ALLOWED ON LAND
ONLY WHERE INDICATED**



-  PUBLIC ACCESS - Land Owned by La Crosse County
-  PUBLIC ACCESS - Land Owned by Town of Hamilton
-  PUBLIC ACCESS - Land Owned by La Crosse County
-  PRIVATE PROPERTY







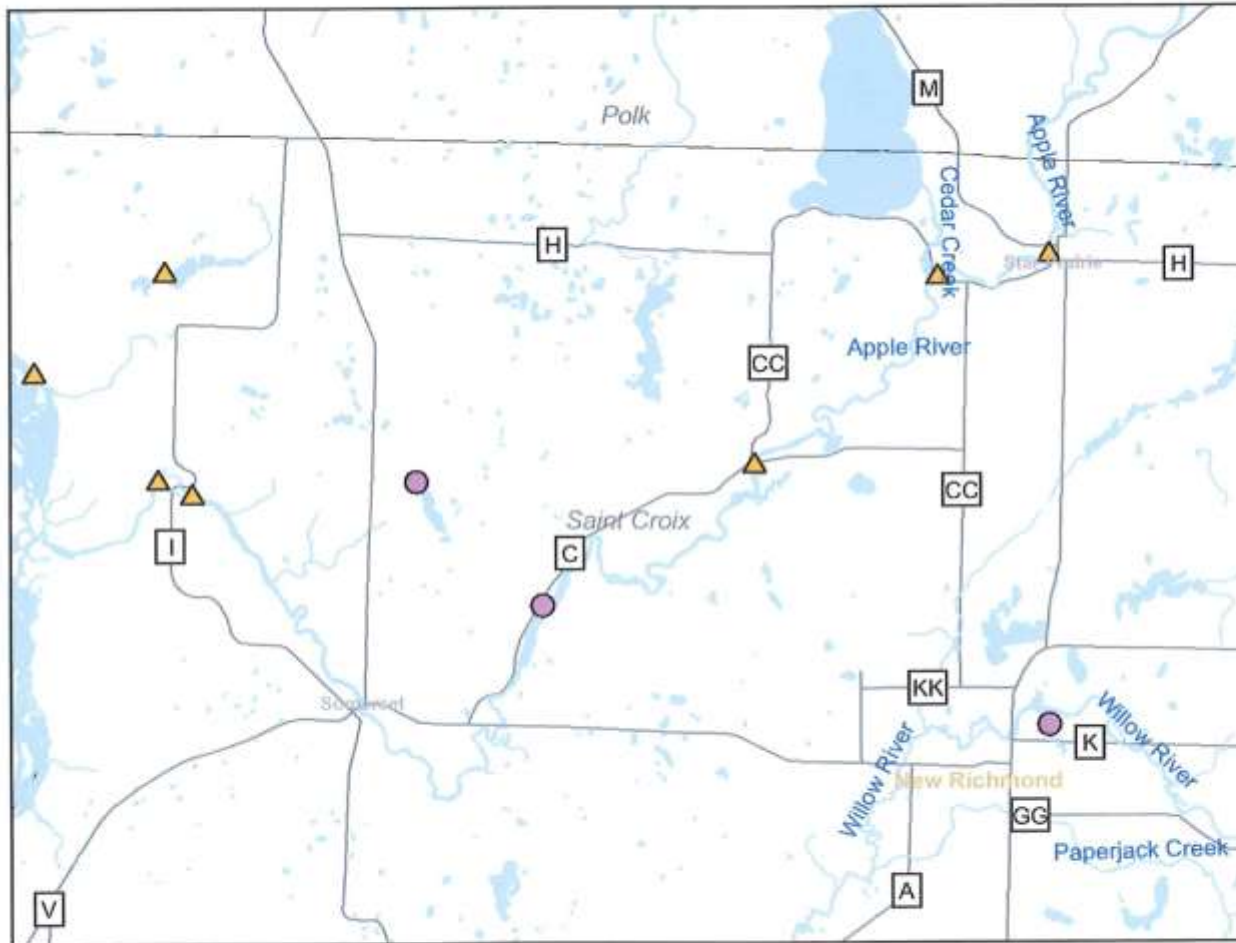
RIGHT
OF WAY
ENDS
HERE

**NO
TRESPASSING**

Wayne Holm



Public Boat Access Sites



Legend

Verified Boat Access Sites

- RAMP
- CARRY-IN
- UNKNOWN

Un-Verified Boat Access Sites

- Not Verified

Major Highways

- Interstate
- State Highway
- U.S. Highways

Rivers and Streams

- Rivers and Streams

County Roads

- County Roads

County Boundary

- County Boundary

24K Open Water

- 24K Open Water

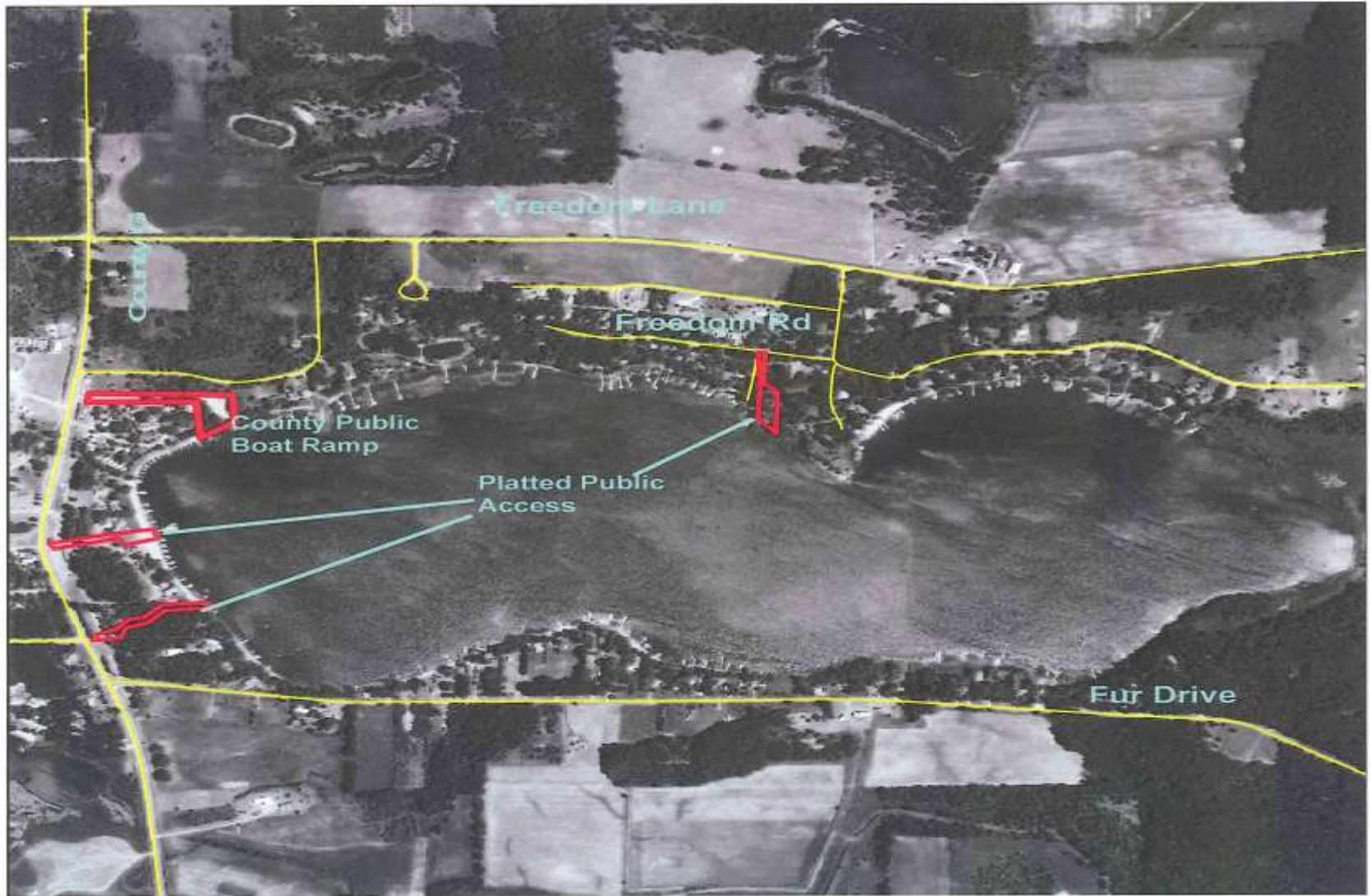
Municipalities

- Village
- City



Scale: 1:109,082

This map is a user generated static output from an Internet mapping site and is for general reference only. Data layers that appear on this map may or may not be accurate, current, or otherwise reliable. THIS MAP IS NOT TO BE USED FOR NAVIGATION.



JORDAN LAKE PUBLIC ACCESS SITES

WATER ACCESS BOUNDARY

*Please respect the
neighborhood and pack out
any litter.*

*Thank you!
Residents of the Town of --*

Grants

The Bureau of Community Financial Assistance administers grant and loan programs.

Alphabetical listing of Grant Programs

A-L	M-Z
<ul style="list-style-type: none"> • All-Terrain Vehicle (ATV) • ATV Enforcement Patrol • Aquatic Invasive Species Control • County Conservation Aids • County Forest Acreage Payments • County Forester Administrator • County Snowmobile Enforcement Patrols • Dam - Municipal • Dam - Removal • Dry Cleaner • Federal Aid in Sport Fish Restoration Act • Federal Clean Vessel Act • Financial Assistance for Remedication of Polychlorinated Biphenyls (PCB) Contaminated Sediment • Forest Fire Protection • Forest Stewardship • Forestry Aids to Counties • Gypsy Moth • Knowles-Nelson Stewardship Program - See Stewardship 	<ul style="list-style-type: none"> • Nonpoint Source - See Runoff Management • PCB Contaminated Sediments • Recreational Boating Facilities • Recreational Trails • Recycling Efficiency Incentive • Recycling Grants to Responsible Units • Recycling Demonstration/Waste Reduction • River Protection Planning • River Protection Management • Runoff Management <ul style="list-style-type: none"> • Notice of Discharge • Priority Watershed and Priority Lake • Targeted Runoff Management • Urban Nonpoint Source and Storm Water • Site Assessment (SAG) • Snowmobile Trail Aids • Spear Fishing Law Enforcement Assistance • State Wildlife Grants Program • Stewardship









The Boat Service Facility
is open from 8:00 AM to 5:00 PM
Monday through Friday. Hours
may vary during the winter
months. For more information,
please call 800-456-7890.

Boat Service Facility
is open from 8:00 AM to 5:00 PM
Monday through Friday. Hours
may vary during the winter
months. For more information,
please call 800-456-7890.



A scenic landscape photograph featuring a dirt path that leads from the foreground towards a body of water in the distance. The sky is filled with dramatic, dark clouds, with a bright, golden light breaking through near the horizon, suggesting a sunset or sunrise. The trees in the background are silhouetted against the light. The overall mood is serene and natural.

Contact your DNR Grant Specialist
or Water Access Coordinator



Bruce Neeb
DNR West Central Region
715-839-3713
Bruce.neeb@wisconsin.gov

Thanks!

