

**UWSP Office of Disability Services  
Annual Report of Students with Disabilities  
For 2007-2008**

**Number of eligible students enrolled in Disability Services (DS) 347**  
**Number prospective students interviewed for services during the year 146**

**Percentage of enrolled eligible DS students of total student body enrollment  
 (Based on fall semester 2007 total enrollment of 8,897) 3.9 % (3.6% in 2006-07)**

**Number and Percentage of disability category for 2007-08**

	Number	Percentage	(comparisons *)
<b>Learning Disability</b>	<b>102</b>	<b>29.4%</b>	<b>(30.5%; 34 %; 35.1 %)</b>
<b>ADD/ADHD</b>	<b>113</b>	<b>32.6%</b>	<b>(34.3%; 31%; 29.8 %)</b>
<b>Psychological Disability</b>	<b>51</b>	<b>14.7%</b>	<b>(11%; 13.3 %; 12.5 %)</b>
<b>Health Impairment</b>	<b>17</b>	<b>4.9%</b>	<b>(6.6%; 7.4 %; 7.7 %)</b>
<b>Hearing Disability</b>	<b>11</b>	<b>3.2%</b>	<b>(3.4%; 3.6 %; 3.6 %)</b>
<b>Visual Disability</b>	<b>7</b>	<b>2%</b>	<b>(1.6%; 2.3 %; 3.2 %)</b>
<b>Brain Injury</b>	<b>12</b>	<b>3.5%</b>	<b>(3.8%; 3.2 %; 3.6 %)</b>
<b>Mobility Disability</b>	<b>4</b>	<b>1.1%</b>	<b>(2.2%; 2.6 %; 2.8 %)</b>
<b>Physical Disability</b>	<b>14</b>	<b>4%</b>	<b>(2.8%)</b>
<b>Autism Spectrum</b>	<b>7</b>	<b>2%</b>	
<b>Other</b>	<b>9</b>	<b>2.6%</b>	<b>(3.8%; 2.6 %; 1.6 %)</b>
	<b>347</b>	<b>100%</b>	
	<b>(318; 309; 248)</b>		

**\*(2006-07, 2005-06 and 2004-05 compared results)**

A new category is added to the statistics, that being “*Autism Spectrum*” disorders which includes autism and Asperger’s syndrome. There was a gradual increase in this category that resulted in making this addition. The UW-System annual report has added this classification as well. The “*Other*” category now includes seizure disorders, speech impairments and cerebral palsy.

Data collected includes DS students attending UWSP from June, 2007 to June, 2008. This data collection is consistent with the reporting time-frame required by UW-System.

Note that eligible students enrolled in DS do not account for all students with disabilities attending UWSP. There are some students who have disabilities but do not enroll or use services from the Office of Disability Services. Those numbers cannot be retrieved.

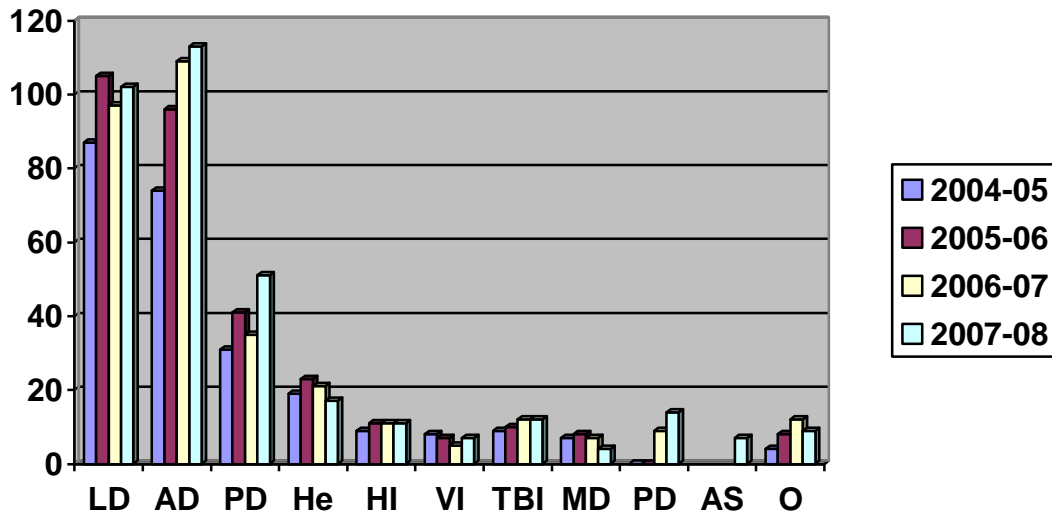


Figure 1: Number of students in each of 11 disability categories over a four-year period.

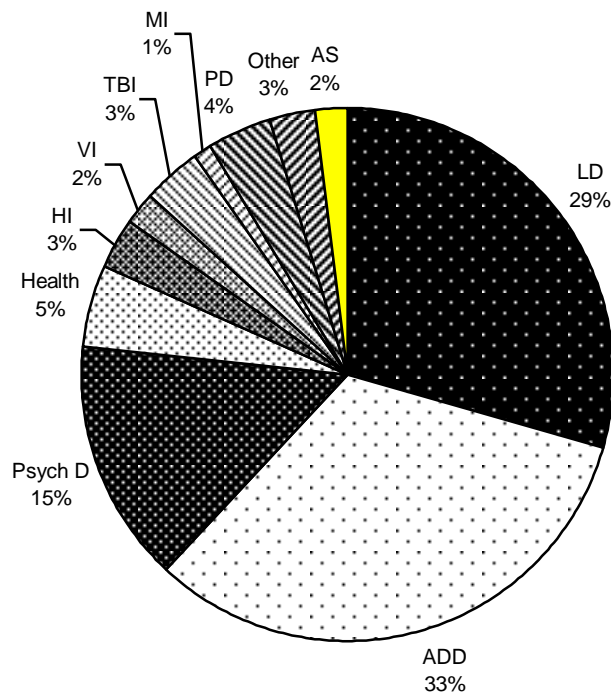


Figure 2: Percentage of students in each of 11 disability categories for 2007-2008 (note LD-learning disability; ADD-attention deficit/ hyperactivity disorder; Psych D-psychological disability; Health-health impairment; HI-hearing disability; VI-visual disability; TBI-traumatic brain injury; MD-mobility disability; PD-physical disability; AS-Autism Spectrum; Other-other disabilities). Percentages are rounded to the nearest whole number.