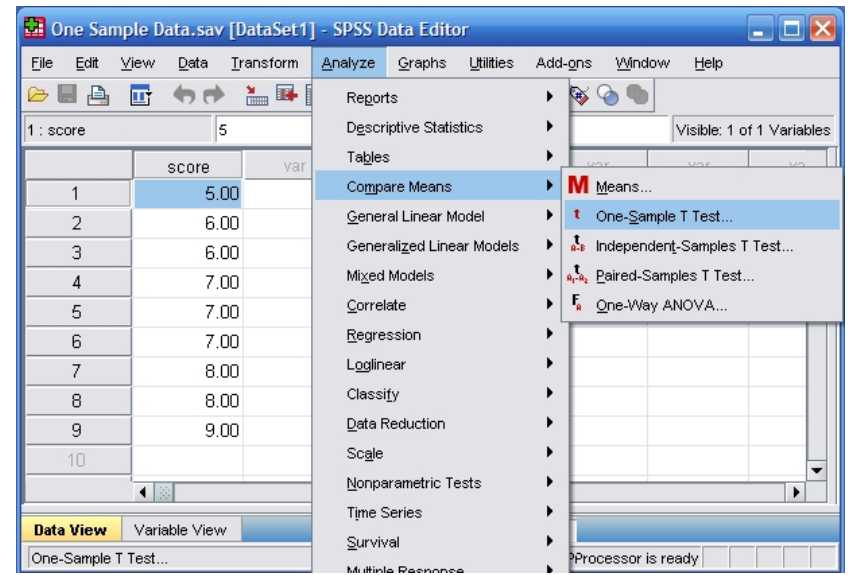


SPSS LESSON: ONE SAMPLE T TEST

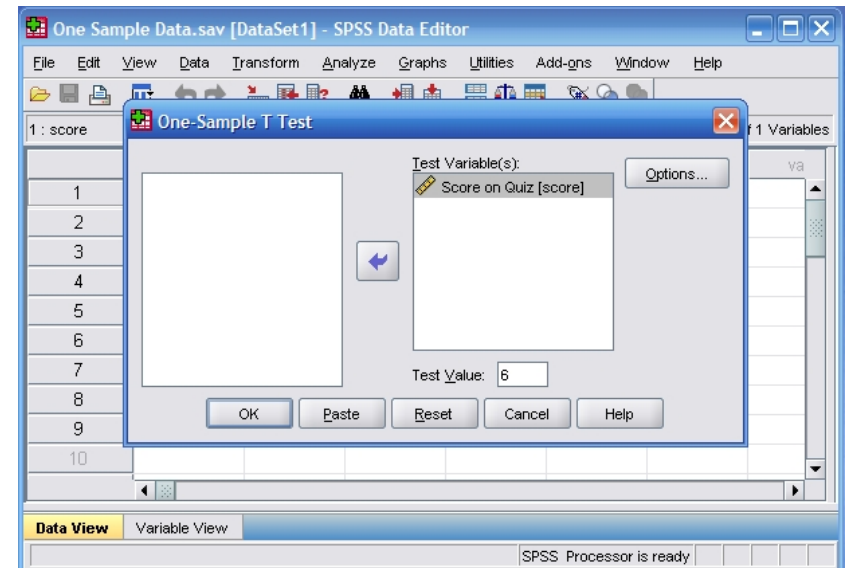
Steps for Obtaining One-Sample Inferential Statistics

1. First, enter the data (described elsewhere).
2. After the data is entered, select the “Analyze → Compare Means → One-Sample T Test” option from the main menu.



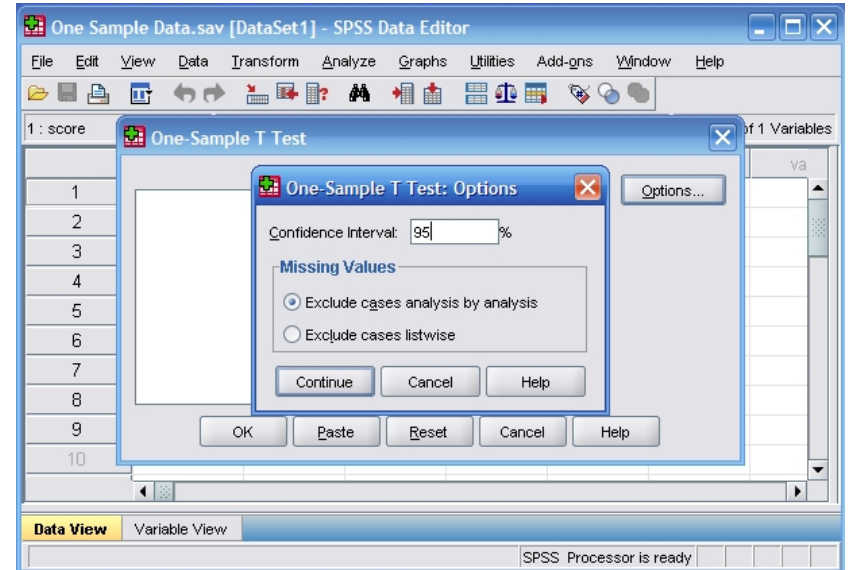
Steps for Obtaining the Significance Test

3. A dialogue box will then appear for you to choose the variables of interest.
4. Select the variables you wish to analyze by clicking on them and hitting the arrow to move them into the “Test Variables” box.
5. Be sure to enter a known or hypothesized mean into the “Test Value” field. If you do not enter a value here, SPSS will automatically use zero as the comparison mean.
6. If you do not wish to alter the default (95%) confidence level, click “OK.” A separate window with the output will appear. You will note that this matches the types of output used in class.



Steps for Altering the Confidence Interval

7. If you wish to alter the width of the confidence interval, select the "Options" button.
8. Another dialogue box will appear where you can change the confidence level. When you are done, click "Continue." This will return you to the original dialogue box.
9. After clicking on "OK" in the original dialogue box, a separate window with the output will appear. You will note that this matches the types of output used in class.



Your data have now been analyzed!