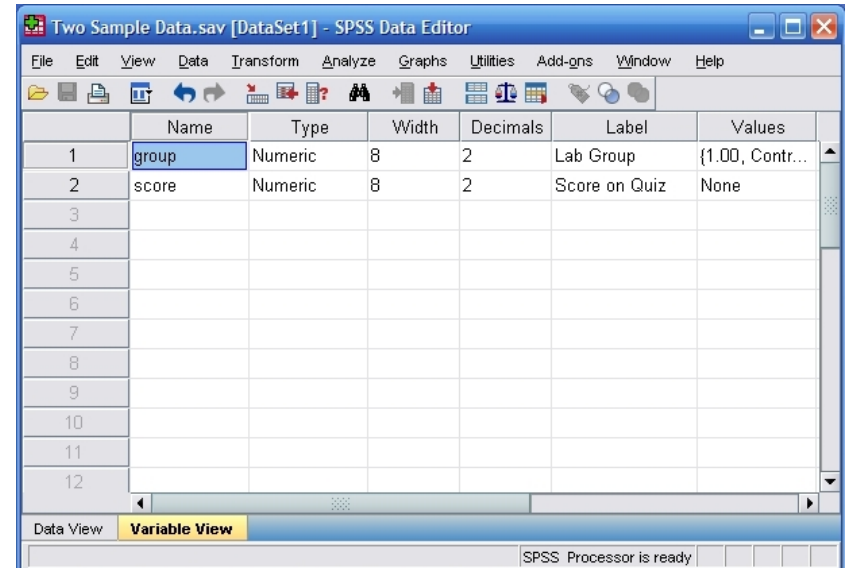


SPSS LESSON: ENTERING MULTIPLE SAMPLE DATA

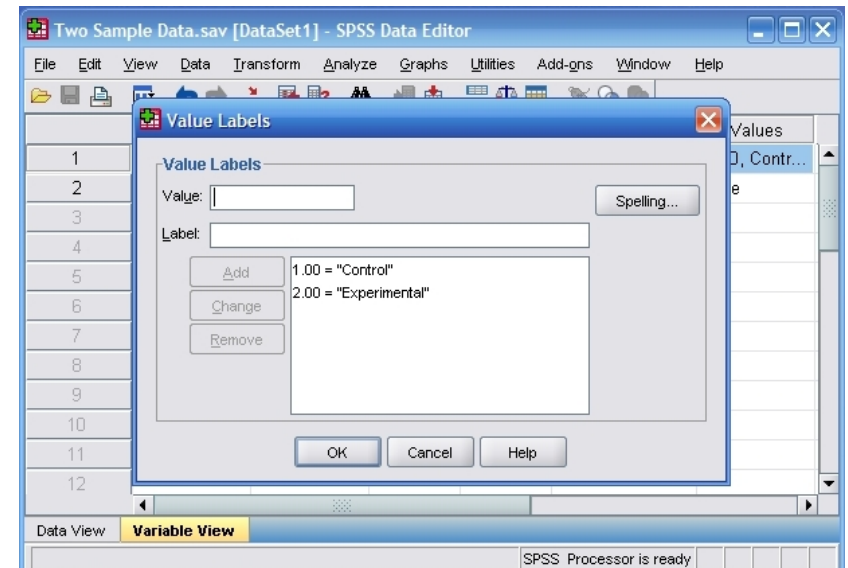
Steps for Defining All Variables

1. First, click on the variable view tab on the bottom left-hand corner of the screen.
2. Then click on the upper left-hand cell.
3. Type in the name of the variables in the box. Simply type in the name and hit the enter key.
4. You may wish to enter a "Label" (or longer name) for each variable in your data set.



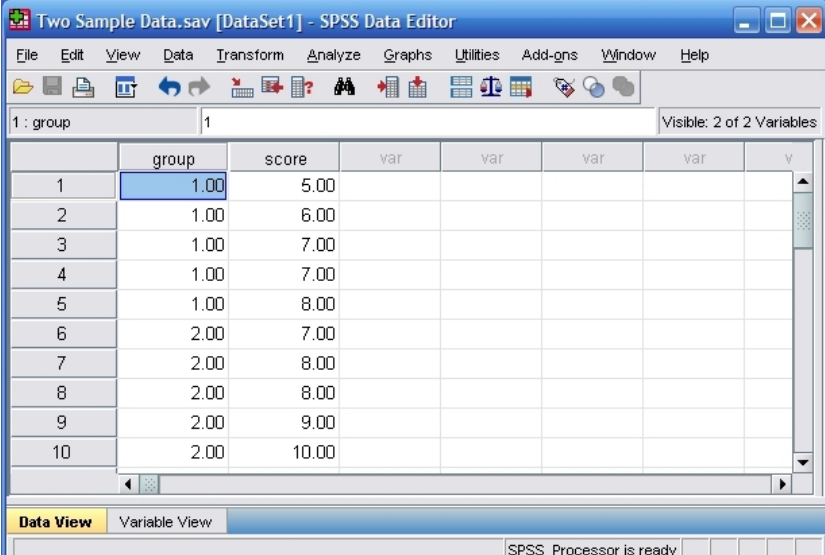
Steps for Providing Labels for All Values

5. For categorical variables, you should also provide labels for the different categories. Do this by clicking on the "values" cell for the variable of interest. A button will appear, and clicking on this button will make another dialog box appear.
6. You will use numbers to represent the two categories (or "levels") of the variable. For the example, the easiest way is probably to use 1="Control" and 2="Experimental". Do this by entering the number representing the value in the "value" box and the actual value in the "label" box. Click "Add" after entering the information for each value. When you have labeled all of the values, click "OK."
7. If your data set includes more than two groups, simply specify values and labels for each of the groups.



Steps for Entering Data

8. Click on the “Data View” tab on the bottom left-hand corner. You will be returned to a different view in which you can now enter data.
9. Enter the data by clicking on a cell and entering the values. You can move from cell to cell with the arrow keys or with the mouse. Note that each row is for an individual person.
10. Enter the scores for all of the participants. Notice that each participant has scores on both variables. In this example, each of the ten participants has a score on the “group” variable and the “score” variable.
11. If your data set has more than two groups, simply be sure to add a group indicator (a value on the “group” variable) and a “score” for each additional person.



The screenshot shows the SPSS Data Editor window titled "Two Sample Data.sav [DataSet1] - SPSS Data Editor". The window displays a data table with 10 rows and 2 columns. The first column is labeled "group" and the second column is labeled "score". The data is as follows:

	group	score	var	var	var	var	v
1	1.00	5.00					
2	1.00	6.00					
3	1.00	7.00					
4	1.00	7.00					
5	1.00	8.00					
6	2.00	7.00					
7	2.00	8.00					
8	2.00	8.00					
9	2.00	9.00					
10	2.00	10.00					

The "Data View" tab is selected at the bottom left. The status bar at the bottom right indicates "SPSS Processor is ready".

Your data are now ready to be analyzed!