

UWSP Emergency Plan

Arrows Denote Building Evacuation Routes.
Shaded Areas Represent Tornado/Severe Weather Shelter Areas.
Shelter Areas Are Located On Floors 0, 1, and 2 Of This Building.

WHAT TO DO DURING:

TORNADO/ SEVERE WEATHER

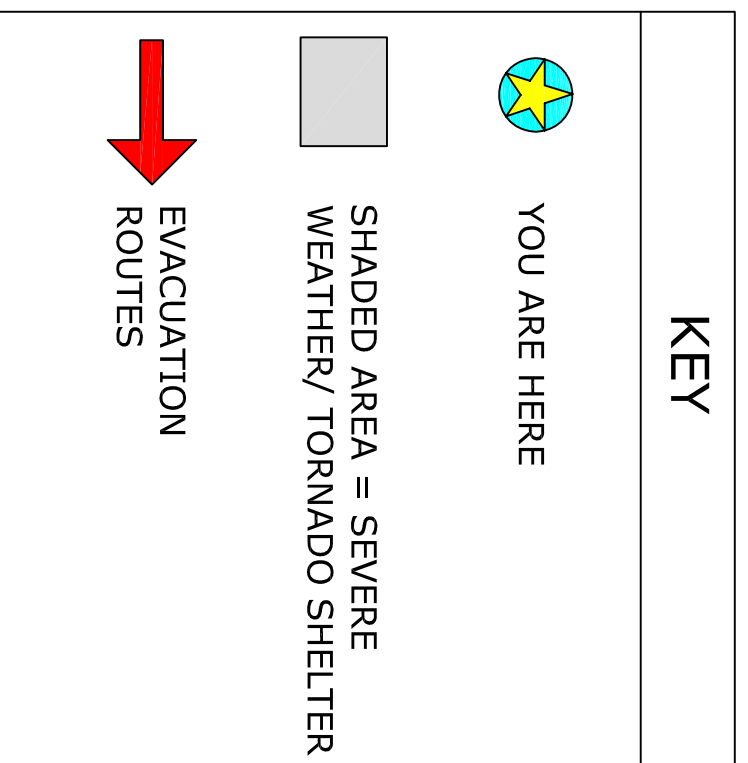
Notification of severe weather will be relayed to the building. If a siren sounds, building occupants should take cover in the lowest safe location available, preferably in an interior room or basement. Remain in your shelter area until tornado warning is expired.

FIRE

Pull a fire alarm and EVACUATE the building in the event of a fire. Before opening a door, feel if it is warm. If it is warm, leave the door closed and find an alternate path. Stay low if you encounter smoke. Stop, drop, and roll should your clothes catch fire.

EVACUATION

Remain calm. Use stairs and not elevators. Pay close attention to your surroundings as you exit. Incidents such as FIRE or HAZARDOUS MATERIALS RELEASES may require that alternate paths be selected. Stay clear of the building and entry ways after exiting the building in order to facilitate responder access to the emergency.



Call 911 for all Emergencies.

There will seem to be a 10 second delay, but **STAY ON THE LINE!**

Meet first responder for directions.

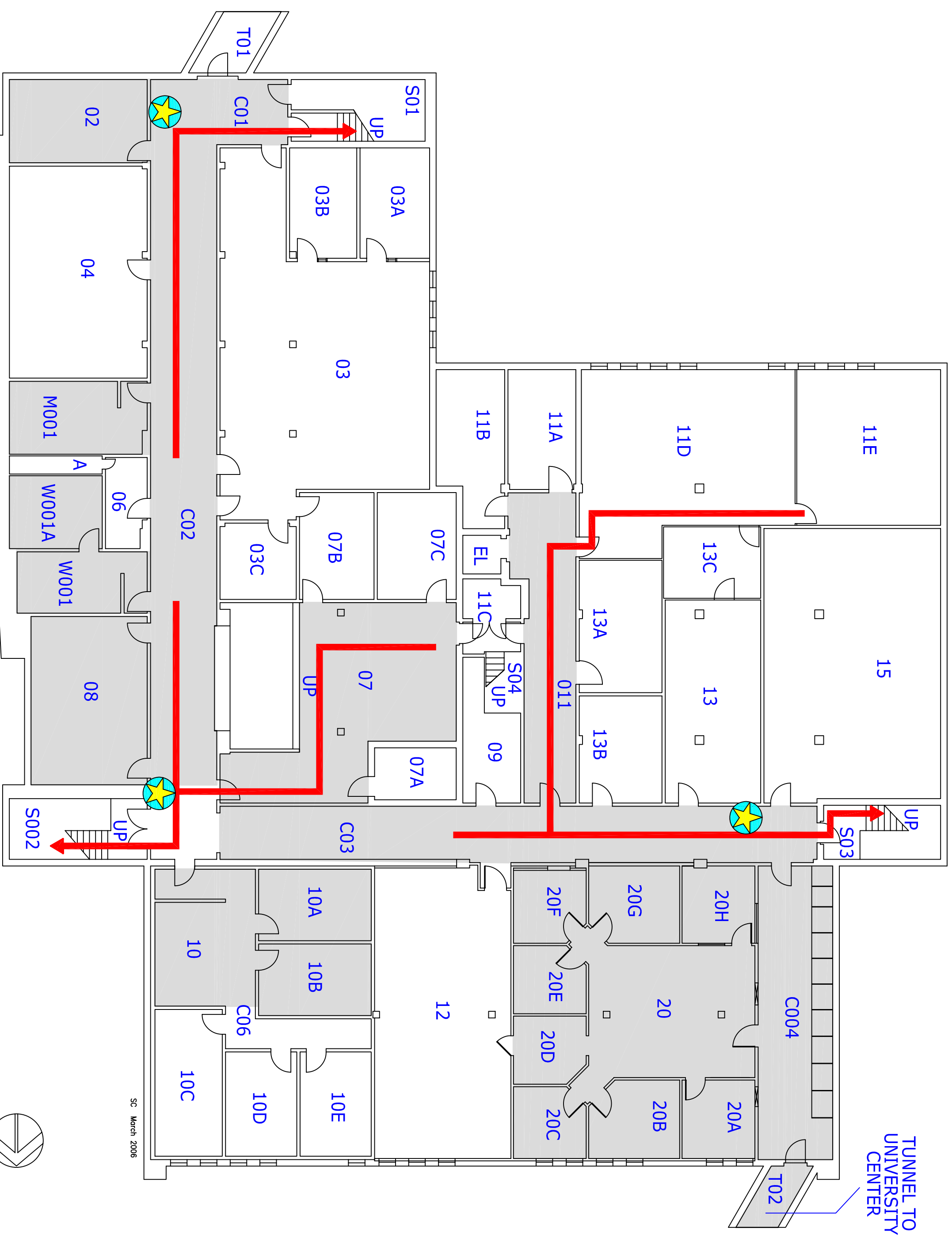
See UWSP Emergency Management Plan at <http://www.uwsp.edu/ehs/emp/> for details on all emergencies.

Contact Protective Services at 346-3456 for additional questions.

Copyright © 2006 by University of Wisconsin-Stevens Point. All rights reserved.

BYRON B. PARK STUDENT SERVICE CENTER LOWER LEVEL

University of Wisconsin Stevens Point
1108 Fremont Street
Stevens Point, WI



SC March 2006

