

UWSP Emergency Plan

Arrows Denote Building Evacuation Routes.
 Shaded Areas Represent Tornado/Severe Weather Shelter Areas.
 Shelter Areas Are Located On Floor 1 Of This Building.

WHAT TO DO DURING:

FIRE




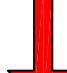
Pull a fire alarm and EVACUATE the building in the direction of the nearest exit. Before exiting, stop and feel if it is warm. If it is warm, leave the door closed and find an alternate path. Stay low if you encounter smoke. Stop, drop, and roll if should your clothes catch fire.

EVACUATION

Remain calm. Use stairs and not elevators. Pay close attention to your surroundings as you exit. Incidents such as FIRE or HAZARDOUS MATERIALS RELEASES may require that alternate paths be selected. Stay calm and do not panic. Facilitate responder access to the emergency.

TORNADO/ SEVERE WEATHER

Notification of severe weather will be relayed to the building. If a siren sounds, building occupants should take cover in the lowest safe location available, preferably in an interior room or basement. Remain in your shelter area until tornado warning is expired.

KEY	
	YOU ARE HERE
	AED
	SEVERE WEATHER/ TORNADO SHELTER
	EVACUATION ROUTES

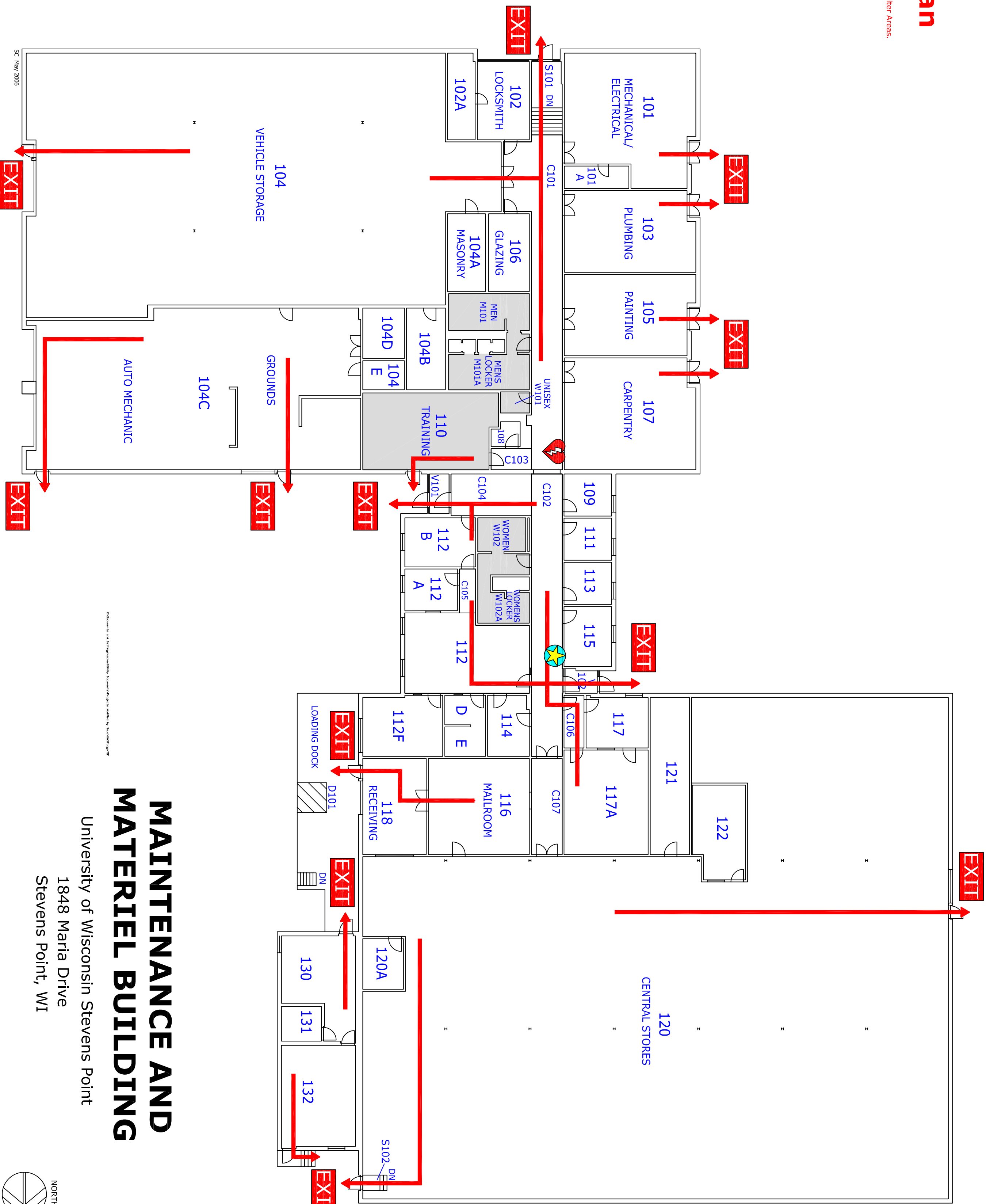
Call 911 for all Emergencies.

There will seem to be a 10 second delay, but **STAY ON THE LINE!**

Meet first responder for directions.

See UWSP Emergency Management Plan at <http://www.uwsp.edu/ehs/emp/> for details on all emergencies.

Contact Protective Services at 346-3456 for additional questions.



©University and State of Wisconsin Emergency Management/University of Wisconsin/2006

MAINTENANCE AND MATERIEL BUILDING

University of Wisconsin Stevens Point
 1848 Maria Drive
 Stevens Point, WI

