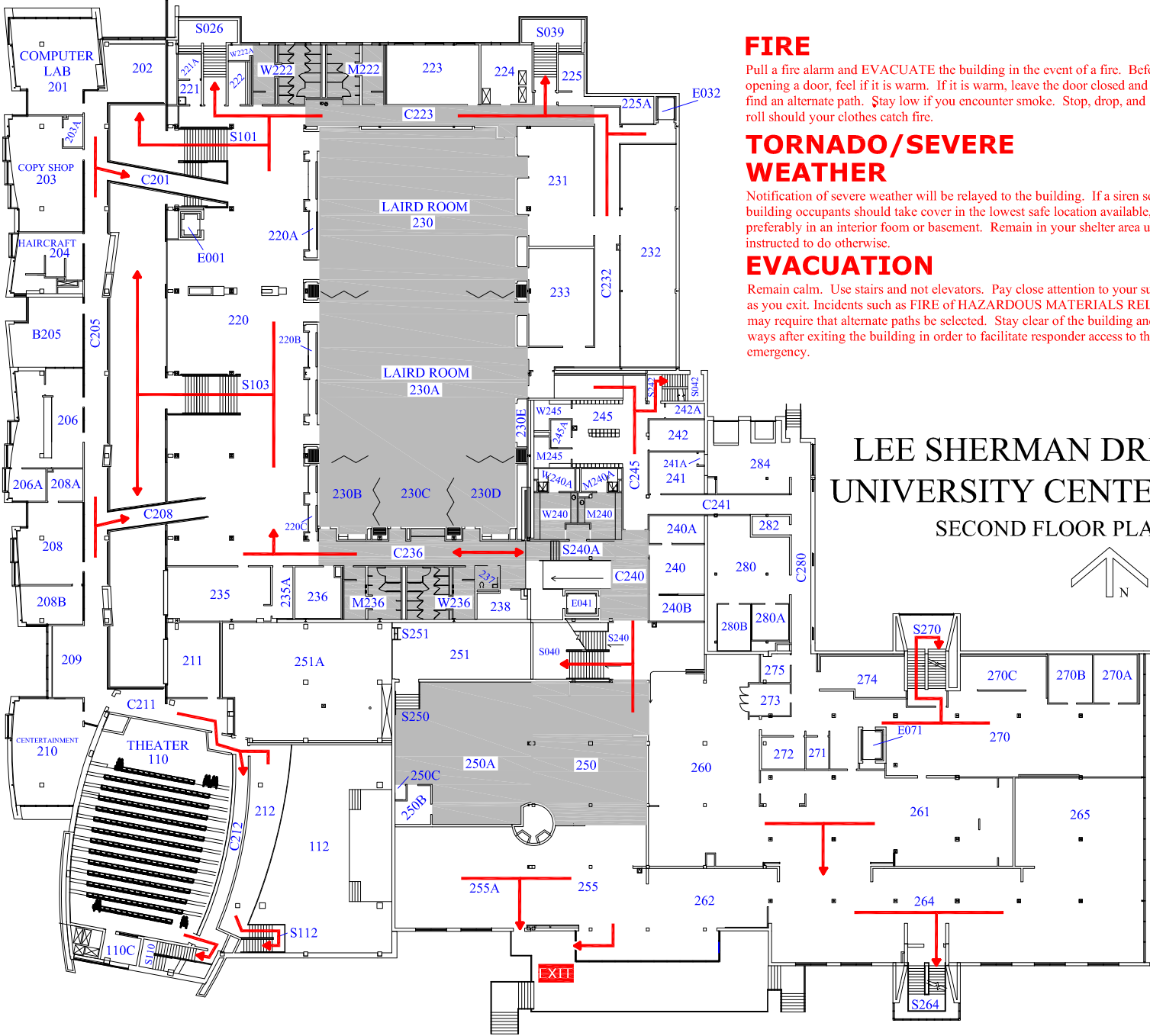


UWSP Emergency Plan

Arrows Denote Building Evacuation Routes
Shaded Areas Represent Tornado/Severe Weather Shelter Areas.
Shelter Areas Are Located On Floors 1 and 2 Of This Building.



FIRE

Pull a fire alarm and EVACUATE the building in the event of a fire. Before opening a door, feel if it is warm. If it is warm, leave the door closed and find an alternate path. Stay low if you encounter smoke. Stop, drop, and roll should your clothes catch fire.

TORNADO/SEVERE WEATHER

Notification of severe weather will be relayed to the building. If a siren sounds, building occupants should take cover in the lowest safe location available, preferably in an interior room or basement. Remain in your shelter area until instructed to do otherwise.

EVACUATION

Remain calm. Use stairs and not elevators. Pay close attention to your surroundings as you exit. Incidents such as FIRE or HAZARDOUS MATERIALS RELEASES may require that alternate paths be selected. Stay clear of the building and entry ways after exiting the building in order to facilitate responder access to the emergency.

LEE SHERMAN DREYFUS
UNIVERSITY CENTER (40)
SECOND FLOOR PLAN

