

Moses Creek



Imagine a pristine, babbling creek flowing through the middle of campus and the city of Stevens Point. Moses Creek was a place of recreation and livelihood for early residents. Today, much of Moses Creek flows in underground pipes.



Historically, Moses Creek widened into a “slough” near downtown Stevens Point before flowing into the Wisconsin River. On the point where Moses Creek intersected the Wisconsin River, George Stevens, a sawmill entrepreneur began caching his supplies in 1839.

A Meander in History



The slough and creek eventually became problems for the city. Early residents dumped garbage into the water. When the river was high, the creek and slough flooded the streets and buildings. The slough was gradually filled in and Moses Creek was encased in a pipe in the mid-1930's. The creek was later re-routed around Schmeckle Reserve and underneath the UW-Stevens Point campus to prevent further flooding in the mid-70's.

“Wouldn't it be nice if that little creek still ran through the city?”
George Rogers-Portage County Gazette

What's in a Name?

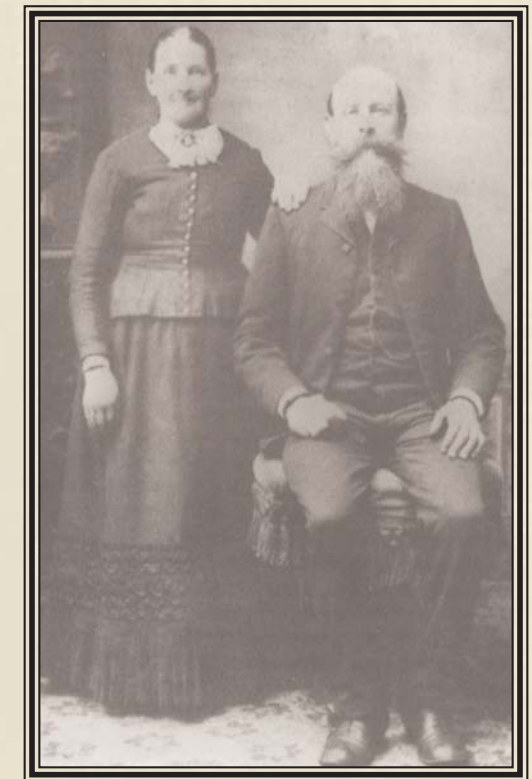


Photo From [Native Realm](#)

Regina Kitowski and Michael Mozuch settled in the town of Hull in the mid-1860s. A creek bubbling out of the ground on their land met the Wisconsin River at Stevens Point and was called Moses Creek an Anglicized version of Mozuch, the landowner's last name.