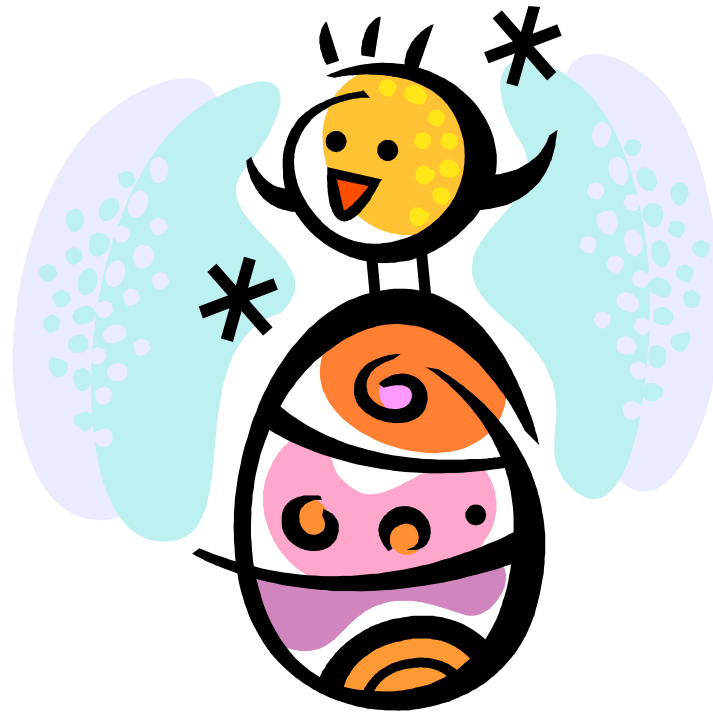


LAKE MANAGEMENT IMPLEMENTATION

CHRIS MURPHY

ADAMS COUNTY CONSERVATIONIST

EGG FARM APPROACH



Be an egg farmer

E – education

G – gather/organize

G – groups and partners

F – facilitate

A – action

R – regulation

M – money/funding

EDUCATION

- Time consuming but worth the return
- Large groups to gain interest
- Small groups to define goals and action items
- Individuals to develop strategy for implementation

GATHER/ORGANIZE

- ORGANIZE INTERESTED PARTIES AND GATHER THEM TOGETHER TO FORM ADVISORY GROUP



ADVISORY GROUPS AND PARTNERS

- ADVISORY GROUPS ARE NONTHREATENING
- ABLE TO IDENTIFY AND TARGET PEOPLE WHO GET THINGS DONE
- IDENTIFY AGENCIES, POLITICIANS, ORGANIZATIONS AND BUSINESSES THAT CAN HELP YOU AND INVITE THEM TO BE PART OF THE ADVISORY GROUP

FACILITATE



- Ask questions & listen to feedback & ideas
- Document as goals & action items in a plan
- Produce rough drafts and initiate revision process
- Be a communications link and reference

ACTION PLANS

- MISSION STATEMENT
- REACHABLE GOALS, ACTION ITEMS AND SCHEDULE
- SHORT TERM AND LONG-TERM
- PROVIDES EDUCATION, GUIDANCE AND ACCOUNTABILITY

REGULATIONS

- **PERFECT WORLD** =
EVERYONE DOING
WHAT IS BEST FOR
THE LAKE
- **REAL WORLD** =
NEED SOME FORM
OF ENFORCEMENT
FOR THE 5%

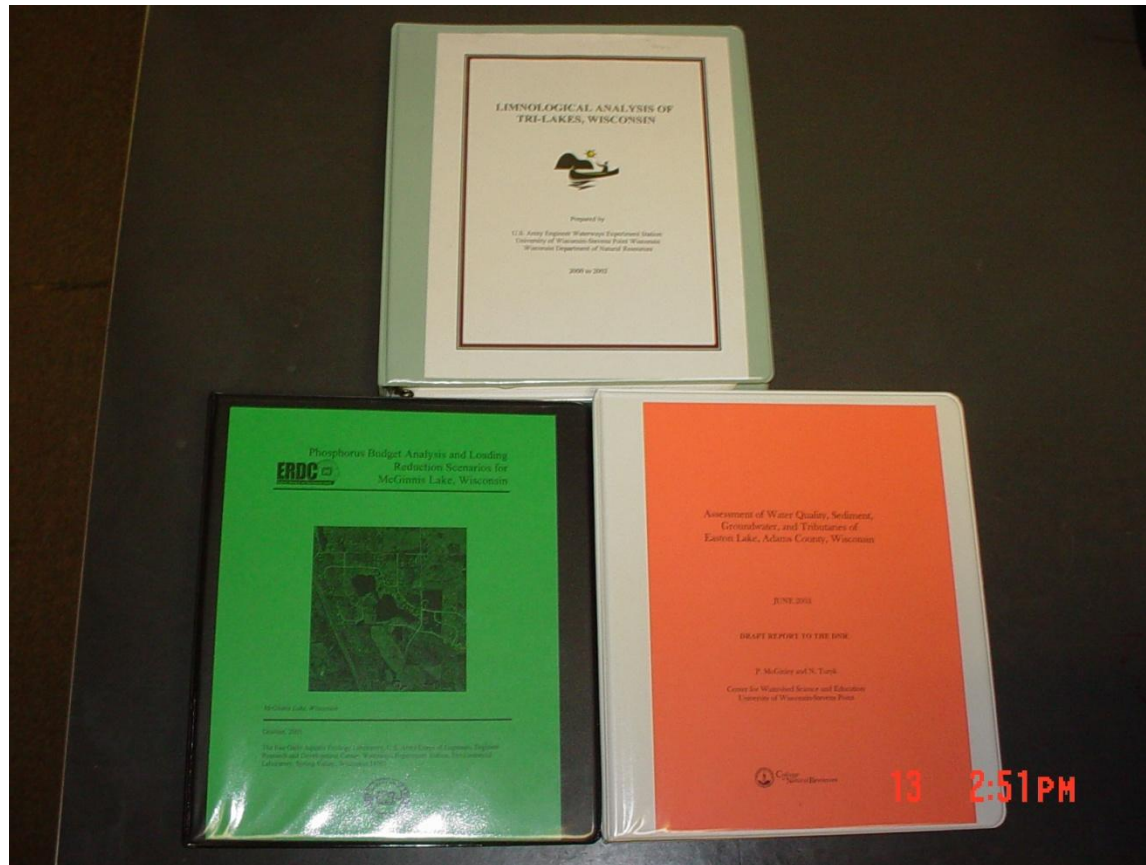


MONEY/FUNDING



- IN-KIND LABOR AND MATERIALS
- DONATIONS
- GOVERNMENT ALLOCATIONS
- GRANTS

LAKE STUDIES



Lake Data and Management Plans



AQUATIC PLANT SURVEYS

- Completed surveys on 20 lakes within Adams County by 2006
- Started 2nd round in 2008
- Goal to complete 4 surveys each year
- Each lake scheduled to be surveyed in 5th year



CRITICAL HABITAT & SENSITIVE AREA DESIGNATIONS

- 20 lakes within Adams County have been designated



AIS BIOLOGICAL CONTROL



LAKE PROTECTION GRANTS

- Received several between 2005 to date.
- 4,610 linear feet of shoreline protection
- 158,775 sq ft of buffers restored to native
- 122,952 sq ft of native buffers enhanced
- 9 new rain gardens installed
- 49 landowners served
- 30 projects currently working on

LAKE PROTECTION GRANTS



LAKE PROTECTION GRANTS



LAKE PROTECTION GRANTS



Lakescape Solutions LLC, lakescapesolutions.com

LAKE PROTECTION GRANTS



LAKE PROTECTION GRANTS



LAKE PROTECTION GRANTS



LAKE PROTECTION GRANTS



LAKE PROTECTION GRANTS



LAKE PROTECTION GRANTS



LAKE PROTECTION GRANTS



LAKE PROTECTION GRANTS



LAKE PROTECTION GRANTS



LAKE PROTECTION GRANTS



LAKE PROTECTION GRANTS



LAKE PROTECTION GRANTS



LAKE PROTECTION GRANTS



PETENWELL AND CASTLE ROCK STEWARDS (PACRS)

- GREAT EXAMPLE OF THE EGG FARM APPROACH
- MEMBERS BECOMING EGG FARMERS
- BALANCE SHORT TERM PROJECTS WITH LONG TERM PROJECTS TO KEEP ENERGY AND INTEREST ALIVE

PACRS LONG-TERM PROJECT

- STARTED WITH PONTOONS AND POLITICS TOUR
- WDNR ALLOCATED \$300,000 FROM STATE LEGISLATION FOR UPPER WISCONSIN WATER QUALITY STUDY
- WDNR LEVERAGED STATE FUNDS TO OBTAIN FEDERAL FUNDING
- **RESULT: WATER QUALITY STUDY**

PACRS WATER QUALITY PROJECT

This year we started a 5 year study project on Petenwell & Castle Rock Lakes. This project involves both Adams & Juneau County LWCD.

The project also involves:

- WDNR;
- USACOE;
- WI River Alliance;
- NOAA;
- CDC;
- EPA;
- UWSP;
- PACRS

PACRS WATER QUALITY PROJECT



- Data will be collected for 3 years;
- 2 years will then be spent evaluating and modeling;
- Project aim: a plan for reducing the total daily maximum load of phosphorus to the system.

Volunteers



Our county involvement is:

- Training volunteers to take water clarity & temperature samples;
- Supervising those volunteers;
- Taking taking algal samples;
- Checking those samples for potentially toxic blue-green algae;
- Entering data in state & federal databases.

QUESTIONS

