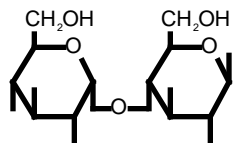


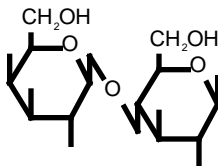
DISACCHARIDE & POLYSACCHARIDE STRUCTURES

DISACCHARIDES



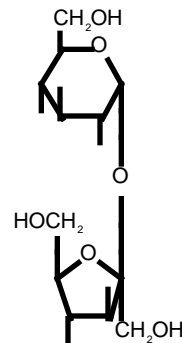
MALTOSE

-D-Glucopyranosyl-
(1 → 4) -D-Glucopyranose



LACTOSE

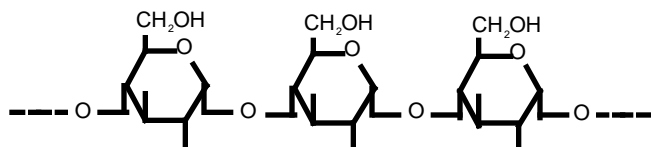
-D-Galactopyranosyl-
(1 → 4) -D-Glucopyranose



SUCROSE

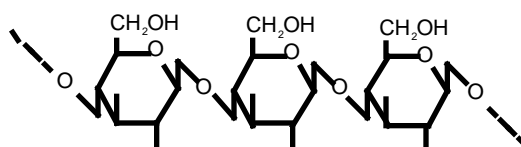
-D-Glucopyranosyl-
(1 → 2) -D-Fructofuranoside

POLYSACCHARIDES



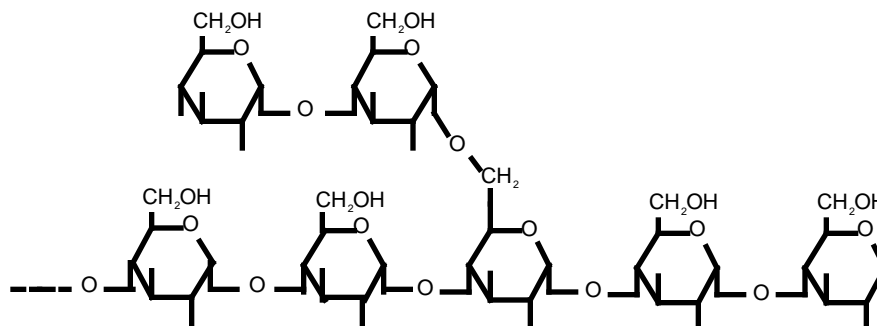
AMYLOSE

(NO BRANCHING, -1 → 4 LINKAGES)



CELLULOSE

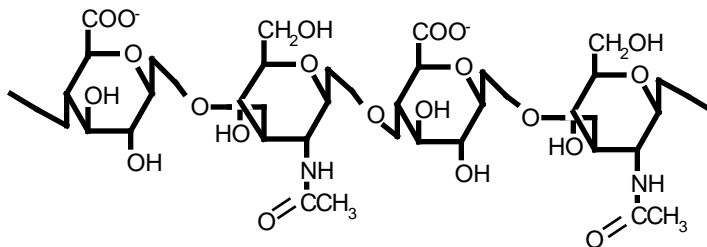
(NO BRANCHING, -1 → 4 LINKAGES)



AMYLOPECTIN, GLYCOGEN

(BRANCHING, -1 → 4 AND -1 → 6 LINKAGES)

MUCOPOLYSACCHARIDES



HYALURONIC ACID

-D-GLUCURONIC ACID-(1 → 3)- D-2-N-ACETYLGLUCOSAMINE DIMERS LINKED (1 → 4)