

the Alembic



Chair's Corner

Dear Fellow Chemists,

Many thanks to Ron Haas for arranging a great program for our December meeting. When I asked Ron if he had any suggestions for a medically-related program, he quickly suggested two topics – both by the same Marshfield researcher, Dr. Kurt Reed. Ron had heard Dr. Reed speak on both of these topics previously, and he knew that Dr. Reed would be an excellent presenter with an interesting topic. Dr. Reed has agreed to be our speaker, and his chosen topic is WEST NILE DISEASE IN WISCONSIN AND ITS TRANSMISSION. Very timely! Invite a friend to join us for this fascinating topic. We always welcome the public at our meetings. Bring your friend along to the dinner, too. Please see the meeting announcement page for details.

This will be a short “Chairman’s Corner” because, like usual, I haven’t given myself much time. I should have taken a notepad and pencil along in the deer hunting stand last week. I would have had plenty of time to write, because I sure wasn’t very busy watching deer! I did have a good time, though, feeding chickadees and nuthatches, seeing interesting wildlife, and enjoying the camaraderie of the hunting camp. It is fun to get together with

friends, just like we do each month at our local section ACS meetings. If you haven’t made a habit of coming to the dinners before the meetings, try it. These are good social events.

Congratulations and thanks to our newly elected officers. Please support them and help them by saying yes when asked. Ron Haas became one of my favorite people when he not only came up with an excellent program for our upcoming meeting, but he also volunteered to arrange the meeting site and the restaurant as well. I’m sure that Robin Tanke and Don Showalter will appreciate such help as well, as they arrange programs for the next two years. (By the way, you can suggest a program without obligating yourself to be the host!)

Thank you for the privilege of being the CWS-ACS chairperson in 2002. Thanks to everyone in the section who did things and who made things happen. Thanks to those who came to the meetings and thanks to those members who were presenters at a couple of our meetings. Together, we made it a good year.

See you in Marshfield!

Dave

ACS - CWS Mini-Directory

Chair

Dave Thiel
Stora Enso
PO Box 8050
Wisc. Rapids WI 54495-8050
Phone: (715) 422-2470
email: dave.thiel@storaenso.com

Chair-Elect

Robin S. Tanke

Secretary - Treasurer

Tip Randall

Councilor

C. Marvin Lang

Alternate Councilor

Don Showalter

Newsletter Editor

Tom Zamis
Dept. of Chemistry, UW-SP,
Stevens Point WI 54481
phone (715) 346-3258(office)
email tzamis@uwsp.edu



American Chemical Society

Central Wisconsin Section



WEST NILE DISEASE IN WISCONSIN AND ITS TRANSMISSION

by

Kurt Reed, MD

Director of Clinical Research, Marshfield Medical Research Foundation

Tuesday, December 10, 7:30 pm
Marshfield Clinic Laird Center (see map)
Room 50 (Lower Level)

Dinner: 6:00 pm – China Chef

Abstract:

West Nile virus is a mosquito-transmitted virus that can cause fatal encephalitis in humans, domestic animals, and birds. It was first discovered in the New World in 1999 in association with an epidemic in New York City that resulted in seven deaths. Since then the virus has spread from coast to coast and is currently a serious public health problem in the United States. During 2002 Marshfield Clinic collaborated with the Wisconsin Division of Health to perform West Nile virus surveillance among mosquitoes in five southeastern counties and to survey dead birds collected throughout Wisconsin. This presentation provides an overview of the ecology of West Nile virus with an emphasis on the current status of the disease in Wisconsin.

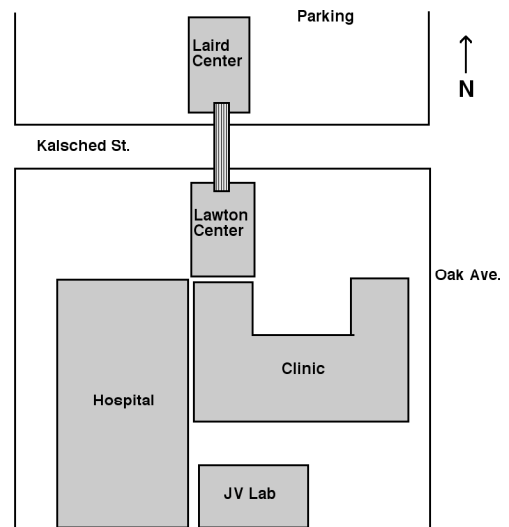
The Speaker:

Dr. Reed is a native of Brodhead WI and received his undergraduate degree in biochemistry and medical degree from the University of Wisconsin – Madison. After his residencies in pathology at Harvard Medical School and the Medical College of Wisconsin, he came to Marshfield Clinic in 1989, directing the microbiology laboratory. More recently, he was appointed Director of Clinical Research at the Marshfield Medical Research Foundation. Dr. Reed’s research interests revolve around using molecular biology techniques to identify unique bacterial and viral pathogens. Current research efforts are aimed at understanding the spread of Lyme disease and other tick-borne pathogens and the role of migratory songbirds in transmission of infections. Dr. Reed was presented with the Gwen D. Sebold Research Fellowship in 1997 in recognition of his work. His wife Suanne also from Brodhead is a staff member of the Marshfield Clinic Psychology Dept. Dr. Reed’s hobbies include among others beekeeping, astronomy, and falconry.

Dinner with our guest speaker will be at the China Chef, 233 S. Central Avenue (downtown Marshfield) at 6 pm.

Reservations may be made by Tuesday noon by contacting: Roseann at St. Jo’s Hosp/Marshfield Clinic Lab at 715-387-7562 or Ron Haas (715-387-7207, haas.ronald@marshfieldclinic.org).

The Laird Center is located north of the Marshfield Clinic and is connected to the main building via an overhead walkway. Parking is available immediately north of the Laird Center. Enter at rear on second level and descend one level to Laird Room 50 located at the north end.



* * * * *

ACS - Central Wisconsin Section 2002-2003 Meeting Schedule

DATE	LOCATION	SPEAKER	TOPIC	HOST
Dec. 10	Marshfield	Kurt Reed	West Nile Virus	Ron Haas
March 3-6	Eau Claire	William Zoller	The Former Soviet Union and the Nuclear Waste Program	Dave Lewis
April 28-May 1 or May 5-8	Stevens Point	John Fortman	The Chemistry of Flight	Marv Lang
Sept 8 - 11	Wisconsin Rapids	Robert Radel	Chemical Weapons: What, Where, How	Dave Thiel
October	Wausau	Robert Bates	The Chemistry and Alchemy of Brewing	Martin Rudd
November	Marshfield	Kevin Lang	Monoclonal Antibodies	Dana Haagenon

ACS-CWS Web Page

www.uwsp.edu/chemistry/acscws/

Contains the most up-to-date information about section activities including all issues of the Alembic and meeting notices.

UW-EC American Chemical Society Chapter Lauded

By UWEC News Bureau
Submitted by Bob St. Louis

The American Chemical Society recently awarded the UW-Eau Claire ACS Student Affiliates Chapter a Commendable award for chapter activities conducted during the 2001-02 academic year.

ACS has 950 student chapters at colleges and universities in the United States and Puerto Rico. Thirty-one were named outstanding, 55 commendable and 71 received honorable mentions for the 2001-02 academic year.

The UW-Eau Claire group's co-presidents are Katie Bushnell, Maplewood, Minn., and Melissa Field, Eau Claire.

The chapter's professional development activities included socials and fund-raisers, a poster contest, participation in UW-Eau Claire's Majors Fair and Student Research Day, design of an ACS student affiliate Web site, tutoring offered to all chemistry students, attendance at professional conferences, and various activities to promote National Chemistry Week.

According to the chapter's annual report, the 20-member group had so many requests for tutors that members had to double the tutoring shifts and increase the number of tutors.

Although they have focused primarily on tutoring for general chemistry classes, they also now offer tutors for organic, inorganic and biochemistry.

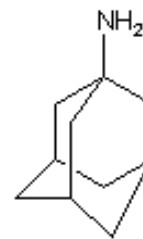
The chapter's contributions to the community included extension of one-on-one tutoring services to several high school students and one technical college student.

The group also has an active chemistry education program that presented

chemistry demonstrations at UW-Eau Claire and 14 area schools to more than 675 students in grades four through eight.

The demonstrations are designed to spark an interest in chemistry and the sciences among younger students. Another demonstration at a local mall was held during National Chemistry Week.

Molecule of the Week



Amantadine

tricyclo[3.3.1.1^{3,7}]decan-1-amine

Outbreaks of the flu are upon us. Amantadine is used to treat both influenza A infections and the effects of Parkinson's Disease. For the flu, it works by blocking penetration of infectious material into the cell.