



Enrollment Data: 10-Year Trends

Presented to Multicultural Affairs

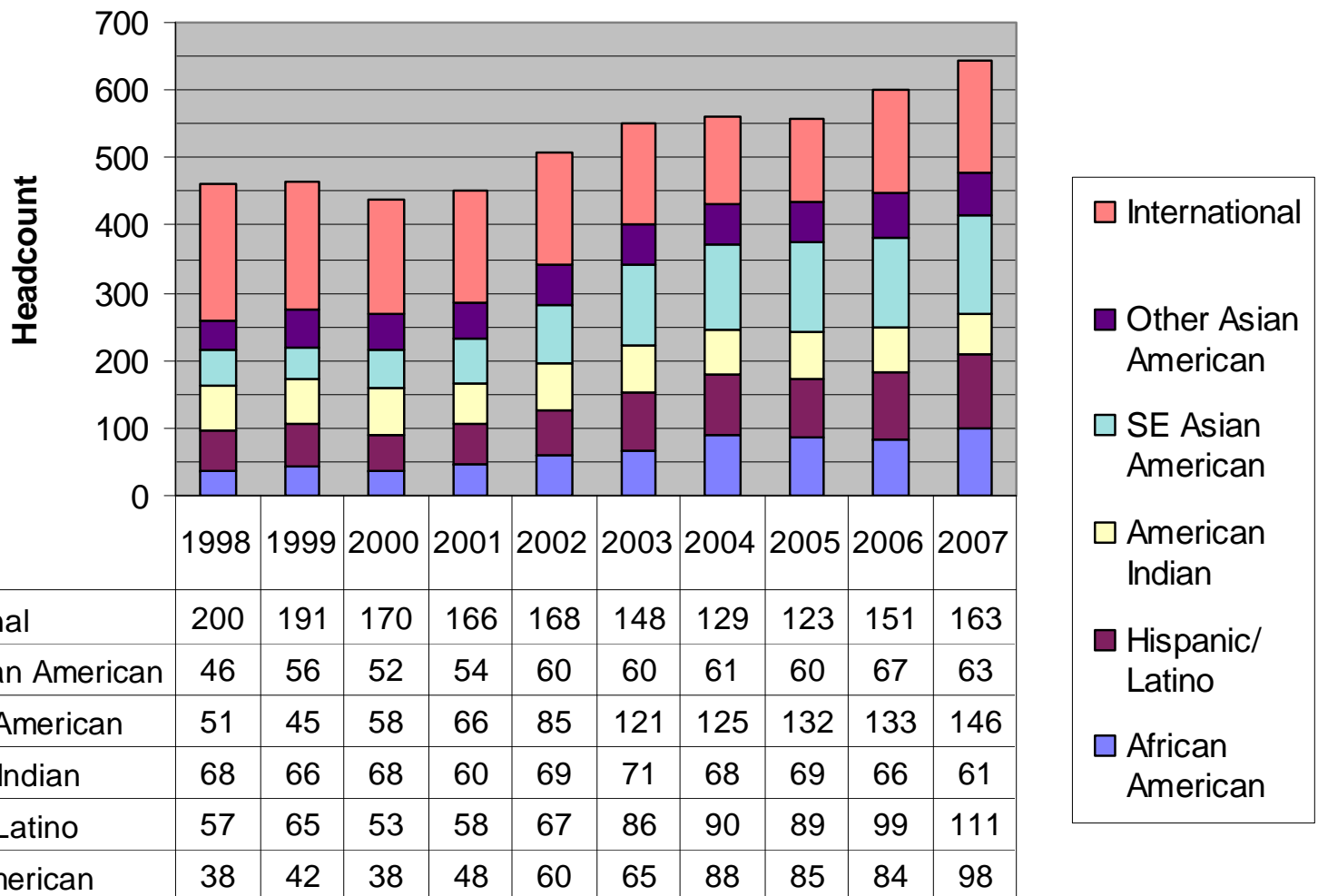
**Policy and Planning
Office of the Chancellor**

March 26, 2008

UWSP Headcount Enrollment by Cohort Year

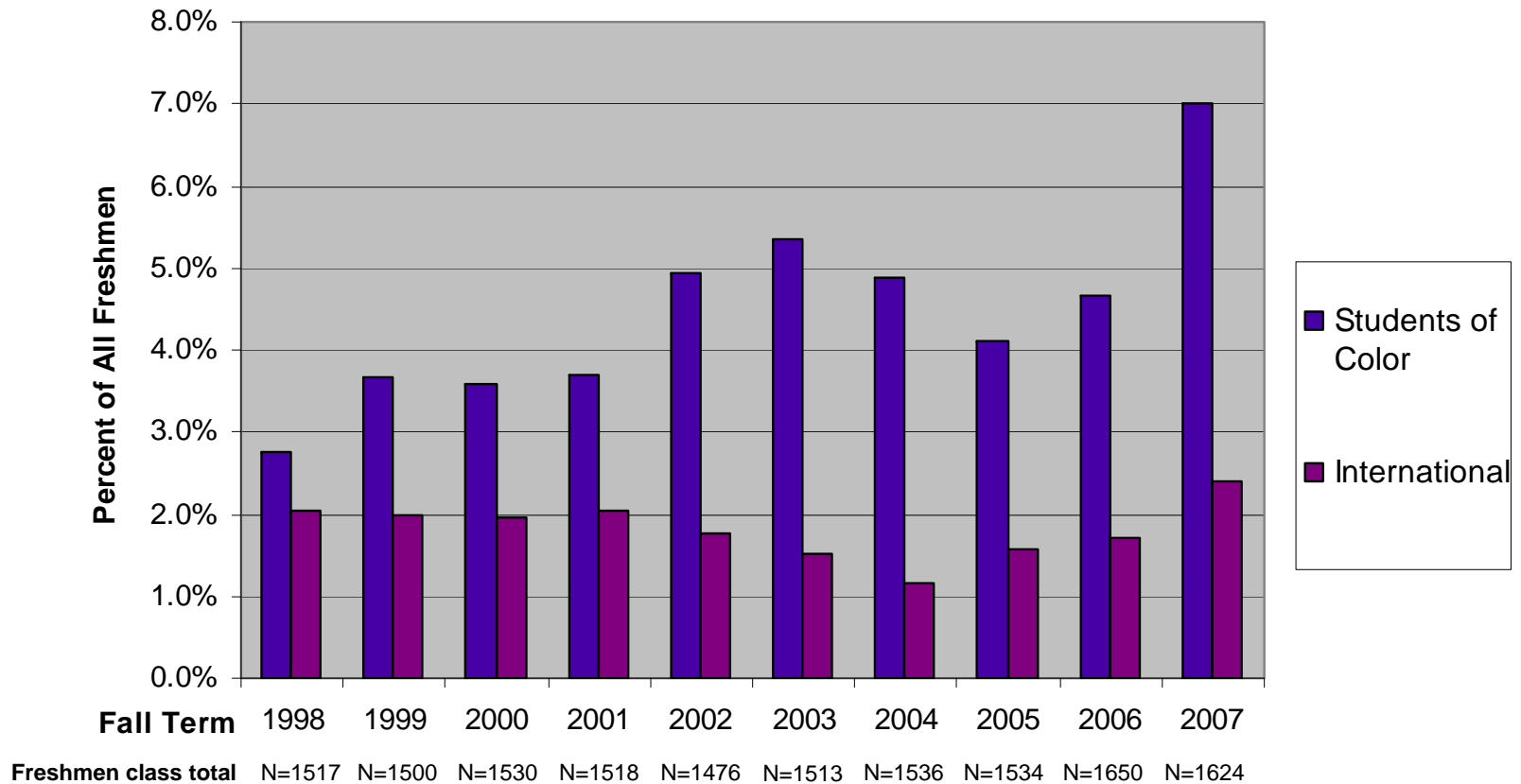
	1998	1999	2000	2001	2002	2003	2004	2005	2006	2007	10-YR % Change	5-YR % Change
TOTAL	8808	8893	8806	8888	8923	9034	8996	8837	9048	9115	3.5%	0.9%
International	200	191	170	166	168	148	129	123	151	163	-18.5%	10.1%
Students of Color	260	274	269	286	341	403	432	435	449	479	84.2%	18.9%
White/Unknown	8348	8428	8367	8436	8414	8483	8435	8279	8448	8473	1.5%	-0.1%
% Students of Color	3.0%	3.1%	3.1%	3.2%	3.8%	4.5%	4.8%	4.9%	5.0%	5.3%		
% International	2.3%	2.1%	1.9%	1.9%	1.9%	1.6%	1.4%	1.4%	1.7%	1.8%		

10-Year Enrollment Trends: Diversity Students (All)

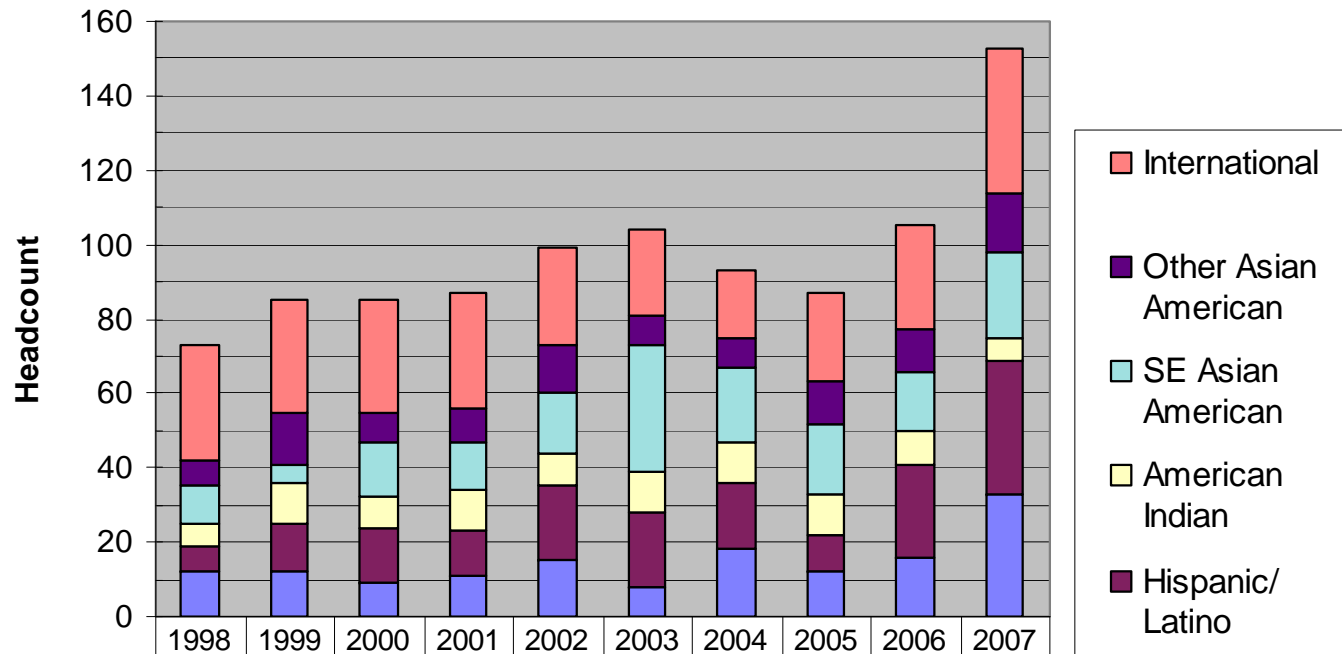


Fall Semester

Diversity Students as a Percentage of New Freshmen: 1998 - 2007



10-Year Enrollment Trends: New Freshmen Diversity Students



	1998	1999	2000	2001	2002	2003	2004	2005	2006	2007
International	31	30	30	31	26	23	18	24	28	39
Other Asian American	7	14	8	9	13	8	8	11	11	16
SE Asian American	10	5	15	13	16	34	20	19	16	23
American Indian	6	11	8	11	9	11	11	11	9	6
Hispanic/ Latino	7	13	15	12	20	20	18	10	25	36
African American	12	12	9	11	15	8	18	12	16	33

Fall Semester

Retention to 2nd Year at UWSP

New Freshmen Entering Full Time, Fall Cohort by Race/Ethnicity¹

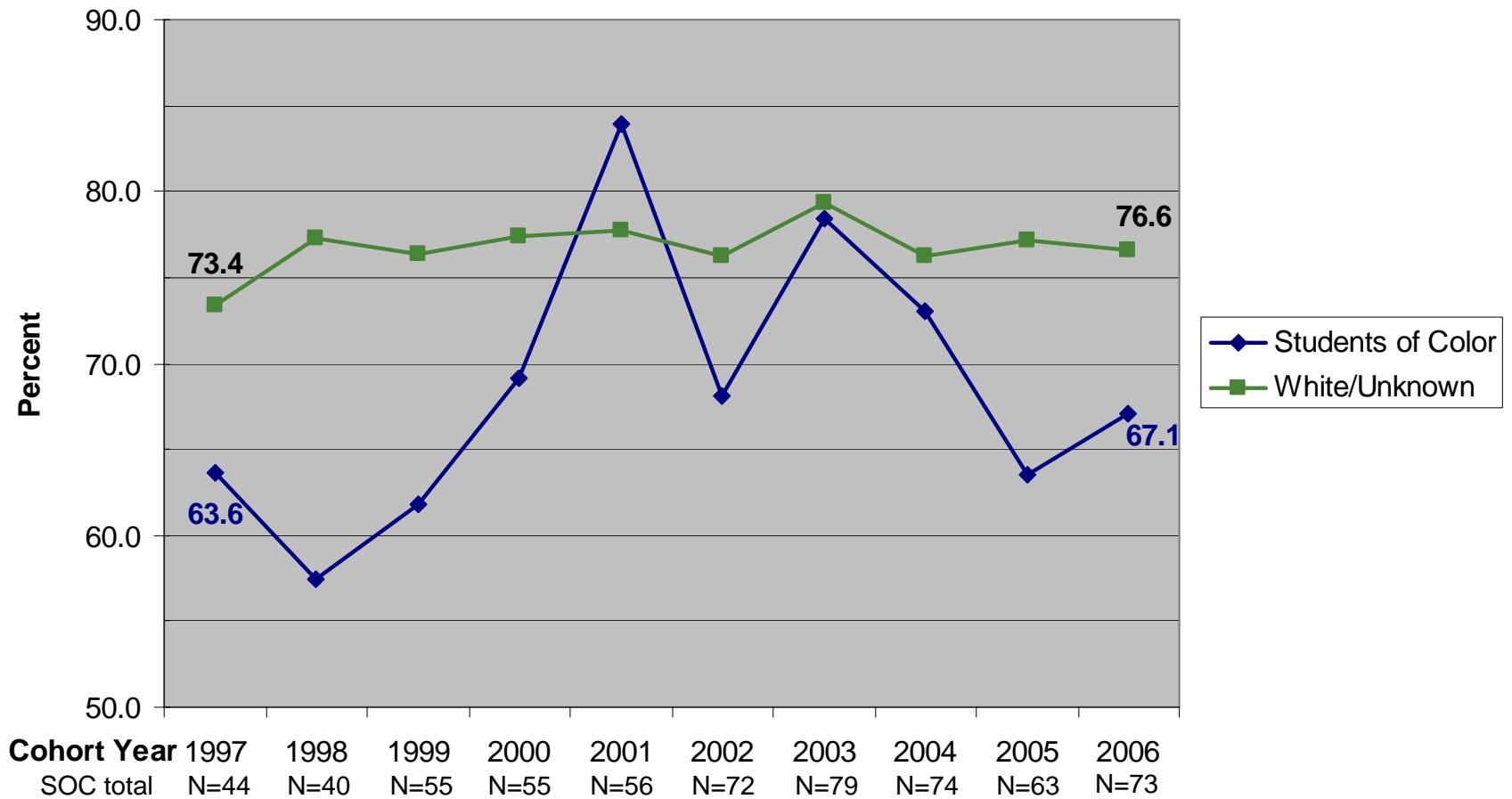
		AA	AI	SA	OA	LH	SOC	WH
2nd Year Retention Rate at Institution Where Started								
1998	#	12	6	8	7	7	40	1,442
	%	58.3	*	*	*	*	57.5	77.6
2004	#	17	11	20	8	18	74	1,436
	%	82.4	63.6	80.0	87.5	55.6	73.0	76.6
2005	#	12	11	19	11	10	63	1,439
	%	66.7	72.7	73.7	*	60.0	63.5	77.9
2006 ²	#	16	9	12	11	25	73	1,544
	%	68.8	66.7	75.0	63.6	64.0	67.1	76.6

AA (African Am.), AI (Am. Indian), SA (Southeast Asian), OA (Other Asian Am.), LH (Latino/Hispanic), SOC (Students of Color), WH (White)

*Five or fewer students were retained or graduated.

¹Excludes international students. ²Data are preliminary.

Retention to 2nd Year at UWSP



6-Year Graduation: Anywhere in UW-S

New Freshmen Entering Full Time, Fall Cohort by Race/Ethnicity¹

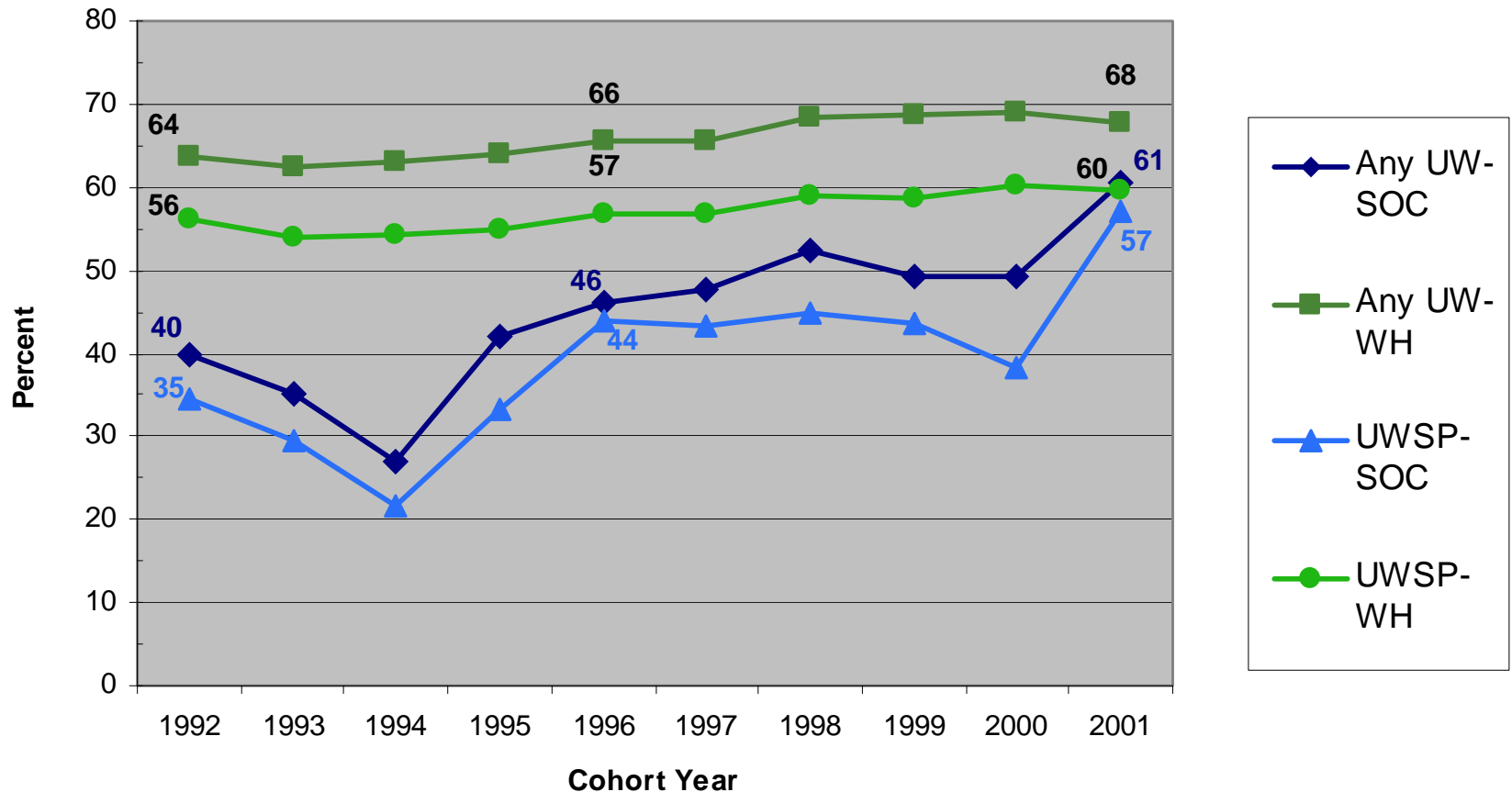
		AA	AI	SA	OA	LH	SOC	WH
6 Year Graduation Rate Anywhere in the UW System								
1998	#	12	6	8	7	7	40	1,442
	%	*	*	*	*	*	52.5	68.4
1999	#	12	11	5	14	13	55	1,409
	%	50.0	54.5	*	64.3	*	49.1	68.7
2000	#	9	8	15	8	15	55	1,438
	%	66.7	*	66.7	*	40.0	49.1	69.0
2001	#	11	11	13	9	12	56	1,424
	%	54.5	*	76.9	77.8	58.3	60.7	67.6

AA (African Am.), AI (Am. Indian), SA (Southeast Asian), OA (Other Asian Am.), LH (Latino/Hispanic), SOC (Students of Color), WH (White)

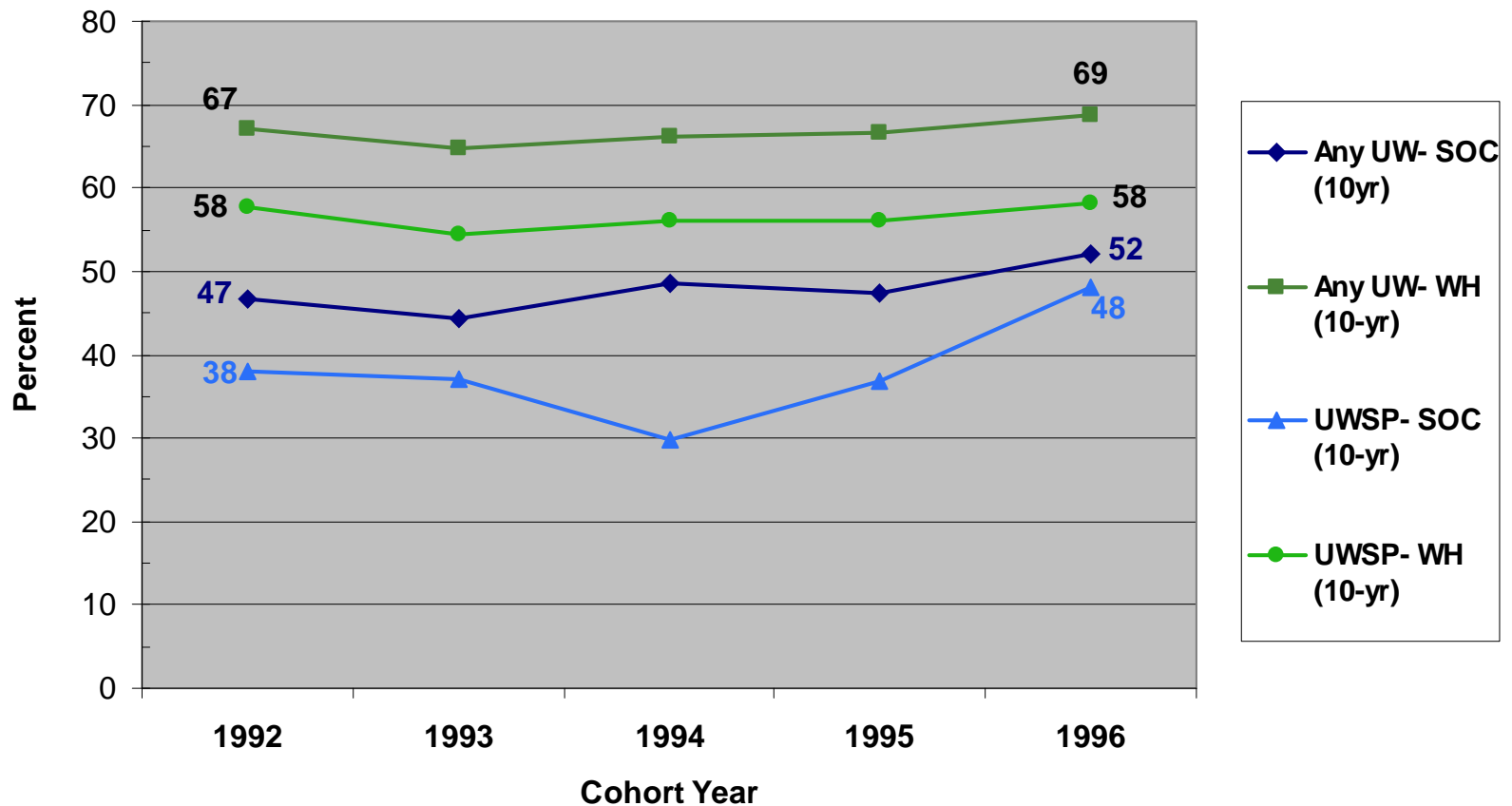
*Five or fewer students were retained or graduated.

¹Excludes international students. ²Data are preliminary.

6-Yr Graduation: UWSP & Anywhere in UW-System



10-Yr Graduation: UWSP & Anywhere in UW-System



Retention & Graduation Summary

		Averages by 5-Year Block Cohorts					
		1992 - 1996			1997 - 2001		2002 - 2006
		Retention	6-YR Grad	10-YR Grad	Retention	6-YR Grad	Retention
SOC	UWSP	60.2	32.6	37.9	67.2	45.6	70.0
	Any-UW	67.4	38.0	47.8	73.6	51.8	78.0
WH	UWSP	75.3	55.3	56.5	76.4	58.9	77.1
	Any-UW	81.5	63.8	66.7	83.9	67.9	86.1

Summary

- Continuous positive trend of overall enrollment of diversity students
 - More diverse freshmen class than ever
- Improved graduation rates for SOC both at UWSP and within System
 - If they leave, SOC are **less likely** to complete a degree in UW-System than white students at the 6-year mark, but **as likely** to at the 10-year mark
- Gap in success rates between students of color and majority students, retention and graduation