

**UWSP Disability and Assistive Technology Center
Annual Report of Students with Disabilities
For 2014-2015**

Number of eligible students enrolled with the Disability & Assistive Technology Center (DATC) in 2014-2015 = 534
(515 in 2013-14; 487 in 2012-13; 469 in 2011-12; 436 in 2010-11; 393 in 2009-10; 368 in 2008-09; 347 in 2007-08; 318 in 2006-07; 309 in 2005-06; 248 in 2004-05)

Number of prospective students interviewed during the year = 224
(269 in 2013-14; 212 in 2012-13; 196 in 2011-12; 168 in 2010-11; 205 in 2009-10; 174 in 2008-09; 146 in 2007-08; 142 in 2006-07; 153 in 2005-06)

Number of DATC students served through our Assistive Technology (AT) program this year = 163
(156 in 2013-14; 135 in 2012-13; 130 in 2011-12; 132 in 2010-11; 120 in 2009-10; 64 in 2008-09; 42 in 2007-08)

Percentage of enrolled eligible DATC students of total student body enrollment (Based on fall semester 2014 enrollment of 9,321 students) = 5.7%
(5.3% in 2013-14; 5.0% in 2012-13; 4.9% in 2011-12; 4.6% in 2010-11; 4.3% in 2009-10; 4.0% in 2008-09; 3.9% in 2007-08; 3.6% in 2006-07; 3.6% in 05-06; 2.8% in 2004-05)

Number and Percentage of Disability Categories for 2013-14

	Number	Percentage	Comparison Numbers served 2007-2014						
			13-14	12-13	11-12	10-11	09-10	08-09	07-08
Learning Disability	113	21 %	113	110	115	127	109	105	102
ADD/ADHD	143	26.8 %	160	152	140	137	138	127	113
Psychological Disability	105	19.7 %	84	83	70	59	58	52	51
Health Impairment	63	11.8 %	64	46	41	27	27	26	17
Hearing Disability	17	3.2 %	19	18	17	11	10	10	11
Visual Disability	8	1.5 %	7	10	16	12	9	5	7
Brain Injury	9	1.7 %	7	4	10	10	10	6	12
Mobility Disability	5	1 %	2	3	2	3	4	8	4
Physical Disability	9	1.7 %	13	17	18	19	16	16	14
Autism Spectrum	24	4.5 %	24	15	15	11	8	6	7
Other (SD-6; SI-2; CP-1)	9	1.7 %	8	9	9	6	4	7	9
Temporary Disability	29	5.4 %	14	20	16	14	n/a	n/a	n/a
Totals	534	100 %							

The category, “Autism Spectrum” disorders includes high functioning autism and Asperger’s syndrome. The “Other” category includes seizure disorders (SD), speech impairments (SI) and cerebral palsy (CP). “Temporary Disability” students were counted beginning in 2010-11, because these students are served and UW-System requires this data as of that year.

Data collected includes DATC students attending UWSP from 6/01/14, through 5/31/15. This data collection is consistent with the reporting time-frame required by UW-System. Note that eligible students enrolled in DATC do not account for all students with disabilities attending UWSP. There are students who have disabilities but choose not to enroll or use services from the Disability and Assistive Technology. Those numbers cannot be retrieved.

DATC Program Data for 2014-2015 continued

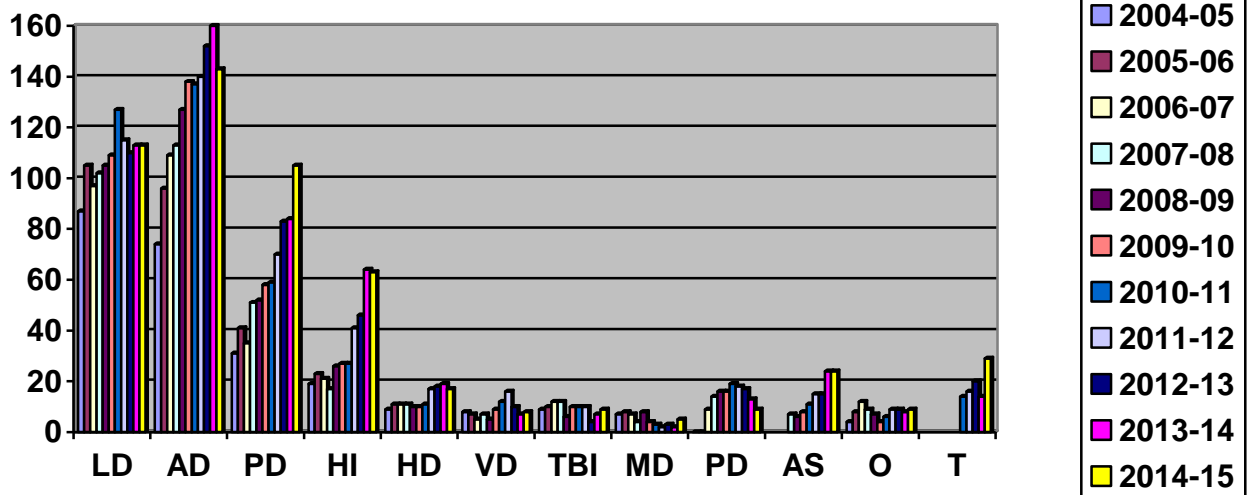


Figure 1: Number of students in each of 12 disability categories over an eleven-year period.

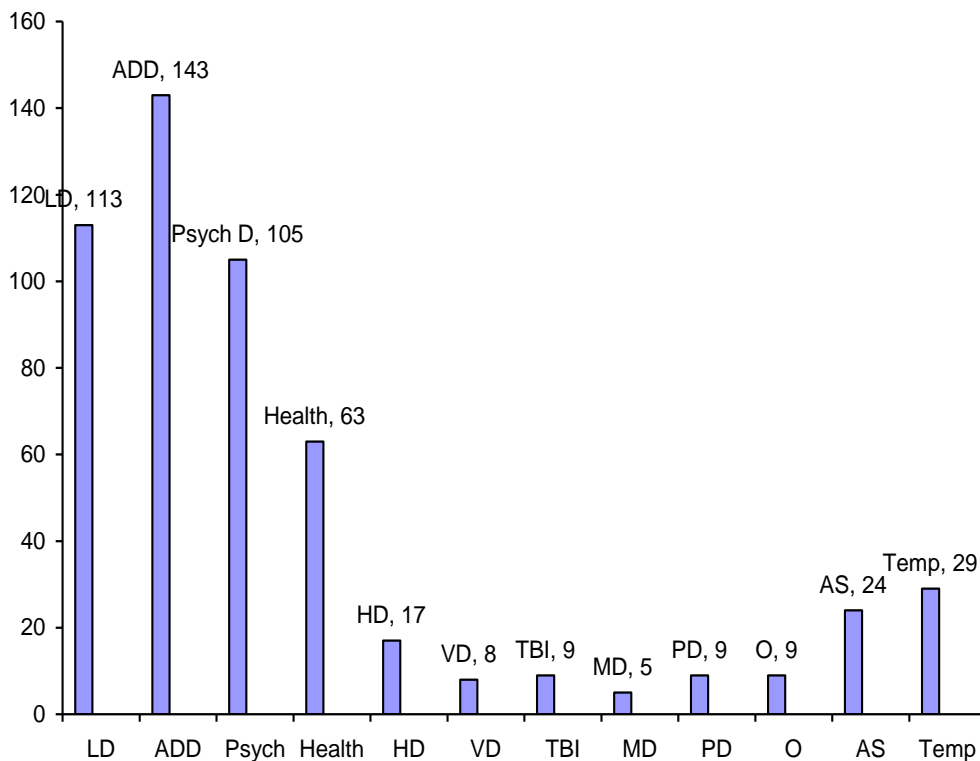


Figure 2: Number of students in each of 12 disability categories for 2014-2015 (note LD-learning disability; ADD-attention deficit/ hyperactivity disorder; Psych D-psychological disability; Health-health impairment; HD-hearing disability; VD-visual disability; TBI-traumatic brain injury; MD-mobility disability; PD-physical disability; AS-autism spectrum; O-other disabilities; Temp-temporary disability).