

Treehaven Times

Summer/Fall 2009 Edition



Director's Corner

By Corky McReynolds, Director

Mosquitoes! Involving Students in Science

Treehaven has created a model for developing and involving students in science and research. Resulting from two years of planning from a National Science Foundation Grant, the original question of "how to engage undergraduate students" quickly became "how to engage a broad community of learners to become involved in a life-long interest in science". The model is tentatively called, "Northern Wisconsin Science Involvement Project". Treehaven is piloting the model with three other environmental learning centers--Beaver Creek Reserve, Hunt Hill Sanctuary, and Fallen Timber Environmental Education Center. The pilot project is to take part

in a survey of mosquitoes. Dr. Jamee Hubbard, UWSP Biology, is the faculty member who is coordinating the research.

The goal of the pilot is to establish a network of environmental learning centers that can engage in student-based science/research that is under the direction of a scientist. The model includes linking middle/high school students with college students/faculty and environment centers to engage in science. At Treehaven our education partner students, (Rhineland Environmental Stewardship Academy (RESA), have been trained to set up, take down, and collect the specimens. Students will also be learning to identify the wide variety of mosquito species. Once we evaluate the pilot, Treehaven will pursue grants to formally establish the Science Involvement Project.

New Destination at Treehaven

A major Land Management Project this year was the completion of a listening place/observation point overlooking the old beaver pond. This was recently upgraded with the addition of a deck engineered and overseen by the Amelse Family annual volunteer project. Construction work was assisted by UWSP work study students, along with Kevin Burns and Ray Everson. Materials for this project were donated by the Kummer/Vallier family, and the support posts were hand hewn from tamarack trees harvested on the property.

Pictured is the view from the listening point, but come and see and hear for yourself. The trail starts at the western

end of the main parking lot, and it is only a short hike to the observation deck.



FALL VOLUNTEER ROUNDUP ANNUAL POTLUCK

Monday, September 21, 2009
5:00 pm

Treehaven WinterBerry Dining Room
RSVP by September 17, 453-4106



Christmas is Coming. The Goose is Getting Fat!

Schedule your Holiday party now. Treehaven offers exclusive and banquet style dining with varied menu choices and reasonable prices. Entertainment is easy in our cozy lodge complete with native stone fireplace, holiday decorations, and seasoned staff to do the work!

Call Michelle at  Treehaven to check on facility availability and select a date.

Also pictured you will see the Forestry 319 students working on surveying a new handicapped accessible trail that will be constructed to access the observation deck. Our future plans are to have the Forestry 319 class map out a handicap accessible trail that once completed will completely surround the old "beaver pond".

We thank the Amelse Family for their continued work on the Treehaven projects! We also thank all of the UWSP students who invested their weekends working hard to make these projects happen!

Treehaven Calendar of Events

The following is a list of programs currently scheduled at Treehaven that are open to the general public. We are constantly adding new public workshops and events. Weekend and commuter packages are available. To learn more about a program, request a newsletter, view an event list, or register - please visit our website:

<http://www.uwsp.edu/cnr/treehaven/publicPrograms.aspx>

Land Navigation using Recreational GPS

(Prerequisite: working knowledge of map & compass.) This workshop is designed to be fun, yet thought provoking, and will take participants beyond a basic familiarization with the use of Global Positioning System (GPS) technology for navigation in the Northwoods. Classroom instruction will be followed with supervised in-the-field exercises to reinforce new skills and build confidence with the equipment and techniques. GPS units will be provided for use by all participants; however, you are encouraged to bring your own GPS with instruction manual. WHEN: 7:00 p.m. Friday through lunch Sunday, **Oct. 2-4, 2009**. INSTRUCTOR: Kevin Burns, experienced forester and backcountry navigator, assisted by Bryant Burns, avid outdoor enthusiast. FEE: Weekend Package: \$175.00 includes all meals, lodging 2/room and book; Commuter Package: \$100.00 includes 2 lunches and book. Registrations due September 25, 2009.

Quilt Retreat

Melanie Moyle, co-owner of "Between Friends: Quilting and Supplies, LLC" shop in Tomahawk, WI, and instructor for this course invites you to join her for a weekend retreat in which you will complete a quilt top using the "Day and Night" pattern. WHEN: 7:00 p.m. Friday through Sunday Lunch, **Oct. 30-Nov. 1, 2009**. FEE: Weekend Package: \$190.00 includes all meals, lodging-2 per room & pattern book-you provide materials; Commuter Package: \$140.00 includes three meals & pattern book-you provide materials. Registrations due October 23, 2009.

Snowshoe Weaving

Workshop to weave your own beautiful, functional pair of Ojibwa, Bear Paw or Alaskan snowshoes. WHEN: Friday 7:00 p.m.-1:00 p.m. Sunday, **November 6-8, 2009 or January 15-17, 2010**. INSTRUCTOR: Chris Johnson. FEE: Full Package-\$265.00 includes 5 meals, lodging-2/room, instruction & kit; Commuter Package-\$200.00 includes 3 meals, instruction & kit. Registrations due one week prior to workshop.

Snowshoe Furniture Weaving

Learn the ancient weaving pattern and knot used in traditional snowshoe making to create a folding snowshoe rocker. WHEN: Saturday 9:00 a.m.-7:00 p.m. **November 7, 2009 or January 16, 2010**. INSTRUCTOR: Chris Johnson. FEE: \$170.00. NOTE: includes 2 meals, kit, materials and instruction. Registrations due one week prior to workshop.

"2010 Dinner and a Movie – Environmental Films"

To begin in January. Check website for line-up and updates.

Wolf Ecology Workshop

Experience shared learning with other wolf enthusiasts while tracking and studying in the classroom and field. You will experience actual tracking and a night time howling survey. WHEN: **January 30-31 or February 27-28, 2010**. INSTRUCTORS: TWIN Staff. Check website for updates.

Winter BOW Workshop

Becoming an Outdoors-Woman; February 5-7, 2010. For more information visit the BOW website: www.uwsp.edu/CNR/bow.

Snowshoe Weekend for Kids & Parents:

Children ages 6 to 12 and their parents or guardian are invited to an outdoor adventure for a fun-filled winter weekend of family snowshoeing fun. Kids and parents will learn the basic skills needed for the popular sport of snowshoeing. Join in the excitement of games on snowshoes, enjoy an invigorating snowshoe hike through a Northwoods forest, and relax in the evening to stories by a warming campfire. Check website for updates.

Fly Tying & Trout Stream Entomology

This favorite workshop will introduce you to: basic fly tying techniques, tools and materials, trout stream invertebrates, stream ecology, resource ethics, and theories on hatch matching and fly presentation. You'll have loads of fun learning to tie common, effective fly patterns for trout at a fraction of the cost! WHEN: 7:00 Friday through Sunday lunch, **March 5-7, 2010**. INSTRUCTORS: Gary Glennon, Stu Nelson, and Jeff Dimick, UWSP. FEE: Weekend Retreat Package: \$190.00; Commuter Package: \$140.00; Kids under 18 Package: \$135.00 up to 3 with adult package; NOTE: Excellent opportunity for one undergraduate credit. Registrations due February 26, 2010.

Group Process and Facilitation Skills Course

This course will concentrate on effective techniques for group creative brainstorming, decision making, and prioritization of ideas. Adapted nominal group consensus building skills, concept mapping and digraphs are some of the specific techniques that participants will practice and learn to apply to their group or team situation. WHEN: 7:00 p.m. Friday through lunch Sunday, **April 16-18, 2010**. INSTRUCTOR: Corky McReynolds, Associate Professor of Resource Management and Director of Treehaven. Contact Treehaven for prices. NOTE: **Graduate credit available**. Registrations due April 9, 2010.

The Gift of Learning!



Present a gift certificate to Treehaven to someone special on your gift list.

The certificate can be redeemed for one of various programs or workshops or for merchandise in the Trailside Nature Shop. Call Michelle or stop out at Treehaven for hassle-free Holiday shopping.



Treehaven Staff

Treehaven Director

Corky McReynolds, Ph.D.

Assistant Director

John Heusinkveld, M.S.

Resource Ecologist

Kevin Burns, M.S.

Office Manager

Michelle Schiltz

Trailside Shop Manager

Cheryl Hobbs

Site Manager

Ray Everson

Kitchen Managers

Ron Hoes

Armand Fodor

Custodial

Elmer Suess

Program Assistants

Caroline Zipp

Cook Staff

Varies on Season

ForesTree Notes

By Kevin Burns, Resource Ecologist

Treehaven Land Management

Activity on the Treehaven property has been very extensive since winter.

- This year's phase of timber harvesting is almost complete. Approximately 75 acres of forest management out of the scheduled 112 acres has been completed. A portion of the timber was sawn into construction lumber and paneling for remodeling at Treehaven. The portable sawmill owned and operated by our neighbor, Jim Nordstrom, was used for this project as well as for instructional opportunities.



- The new spring tree plantings (oak and cedar) are doing well with significant growth.
- Storage buildings are re-organized, and plans are underway to construct a new lumber storage shed.
- The trails and roads are being brushed and mowed with the help of UWSP work study students, and approximately 1/4 mile of new handicap accessible trail is being constructed to the observation point.
- New trail signs will be erected this fall using salvaged utility poles from the property that have been cut into 59 recycled sign posts.
- Four bridge permits to cross Pine and Pickerel creeks have been approved, and construction will begin in the near future.
- Listening Place/Observation Point completed....see page one "New Destination at Treehaven."



Visit Treehaven Trailside Shop for Unique Gifts!

Books, Field Guides, Jewelry, Clothing, Educational Toys, Nature Theme Home Décor, Ornaments.

Call Treehaven for Shop Hours 453-4106



Thank you to....

...Florence and Chester Freed for the Freed Living Trust gift to Treehaven. The gift was deposited into the Treehaven Endowment from which interest earned is used to directly benefit the youth and school environmental programs provided at Treehaven. Florence grew up in Tomahawk and graduated from the University of Wisconsin-Stevens Point in 1940 with a teaching degree. She taught school in Mosinee, Tomahawk and Wausau. Florence died Sept. 28, 2008 in Ontonagon, MI.

...Ron Hoes-Treehaven staff, Dede Amelse-Treehaven Volunteer, and WI Association for Environmental Education for their donation of bird seed.

...Brad Bishop for taxidermy repair.

...Leslie Johnson, Marie & Don Schulz for their work in the flower gardens with weeding and spreading bark.

...Darlene and Mark Henning, and Patty and son David Caudill for painting picnic tables.

...Darlene Henning for covering the store and office while staff members are out and for various office projects!

...Don Schulz and Phill Zipp for their continued work in maintenance with building shelves, organizing, grounds work, painting, and other tasks as needed!

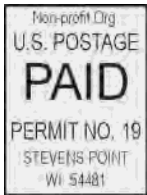
We appreciate everyone for their support of Treehaven! Every little item is helping Treehaven grow! Thank you!

In Memoriam

...Florence Freed, Friend of Treehaven, who passed away September, 2008 at the age of 90.

...Ruth Sylvester, Friend of Treehaven, who passed away November, 2008.

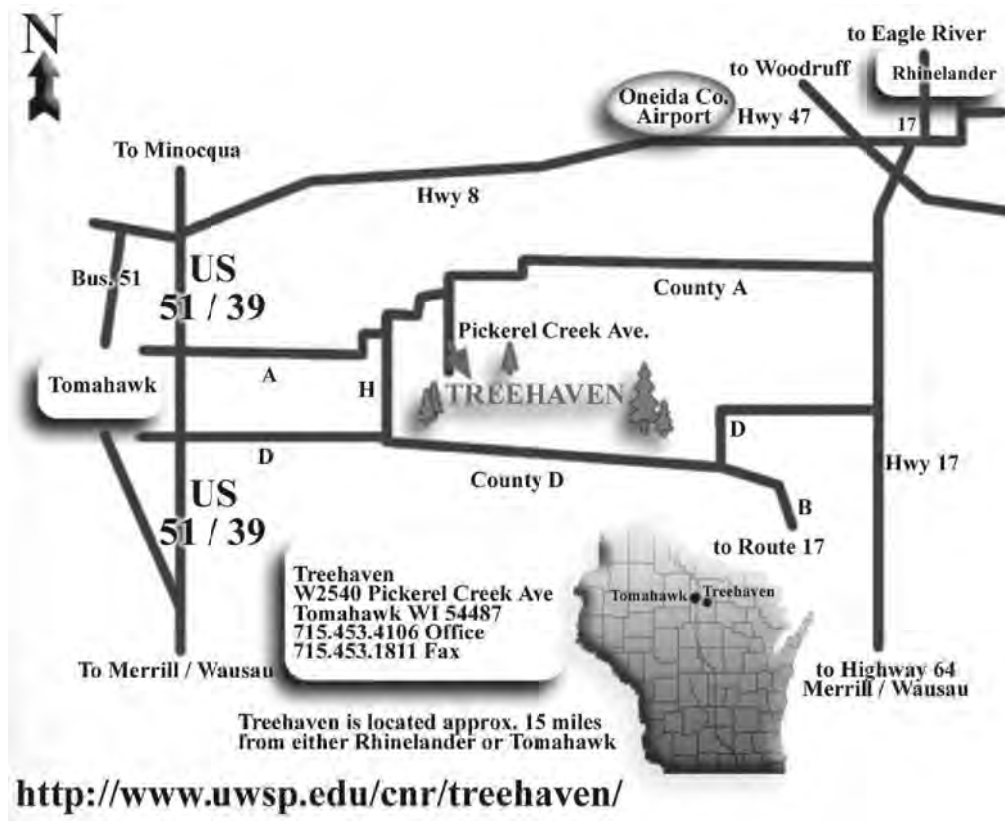
...Daniel Zurawski, UWSP, CNR, Treehaven Student, who passed away July, 2009.



College
of Natural Resources

W2540 Pickerel Creek Road
Tomahawk WI 54487

Return Service Requested



Mileage from...

Chicago	320
Green Bay	130
Madison	200
Milwaukee	230
Mpls/St. Paul	210
Rockford	270

Our Mission...

Treehaven is the Wisconsin center for integrating natural resources education, management, research and recreation.

If you wish to be added to or removed from our mailing list please contact us at 715-453-4106 or Treehaven@uwsp.edu